

THE

Celebrating **125** years  
GENERATIONS OF SUCCESS

BankersADVERTISING  
COMPANY

Effective Sep 1 - Dec 31, 2021

# GUIDE

POINTING YOU IN THE RIGHT DIRECTION

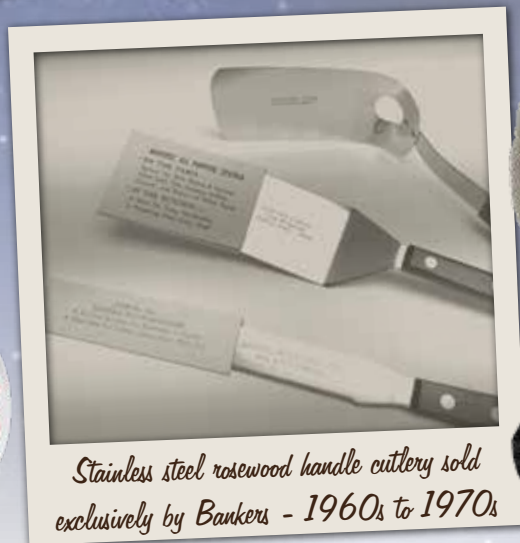
Promotions worth a thousand words, from the past into the present.  
Be part of our future!



Exclusive Bankers commemorative 50-state  
quarter folders - 1999 to early 2000s



Old Fashioned Bankers exclusive preserve and  
jelly gift packs - 1940s to 1970s



Stainless steel rosewood handle cutlery sold  
exclusively by Bankers - 1960s to 1970s



Your one source for all things branded, for 125 years!





### Coleman® Seating AC7000 | Stadium Seat VCLM031 | Outpost™ Breeze Deck Chair



Surprise your clients with either of these amazing gifts featuring a retail recognizable name, Coleman®. Sports fans will appreciate the cushioned comfort every time they cheer for their favorite teams in the adjustable side strapped stadium seat, with your logo providing back support. Features adjustable carry straps and mesh back pocket. Will lay flat for two people. Continue promoting your logo with the branded deck chairs so clients can recline and relax, featuring cooling mesh back with padded solid arms and carry handles. Supports 300 lbs. Great for camping trips, tailgating, sporting events, and more. *Imprint Areas: AC7000: 5" x 5", VCLM031: 7 1/2" x 4"*.

**Colors:** AC7000: Red, Black, Royal ; VCLM031: Red  
**Set-Up Charge:** Reg.: \$60.00; Special: FREE

	AC7000 18	VCLM03 12
Reg.	\$31.28	\$63.80
<b>Special</b>	<b>\$26.28</b>	<b>\$52.99</b>

### 26246 | Koozie® Collapsible Folding Wagon

This folding wagon, made of 210D Polyester and steel, is perfect for hauling gear to outdoor sporting events, concerts, and trips to the park with your screened brand on display. It conveniently folds up for easy transport or storage while setting up in seconds. Includes an adjustable handle for effortless transports and 2 neoprene cup holders to keep your beverage cold and secure. Convenient compact storage, around 8" thick when folded and allows loads up to 150 lbs. Detachable front pocket to add extra storage space. *NOTE: items is not intended to transport children. Size: 20 1/2" x 29 1/2" x 36 3/8". Imprint Area: 7" x 4"*

**Colors:** Black, Red, Blue  
**Set-Up Charge:** \$50.00

	4
Reg.	\$140.00
<b>Special</b>	<b>\$130.00</b>



### AC550 | Coleman® 54-Quart Cooler

Provide clients everything they've been asking for with this classic steel belted cooler with your logo screen printed on it. Made of painted steel and high-density polyethylene (HDPE) for ultimate in durability. Features a nostalgic, retro design for a perfect promotional product for use when tailgating, company picnics, pool parties, and more. Leak-resistant drain allows for draining without tilting with a front latch keeping contents secure. Holds up to 85 cans and retains ice for 5 days. *Size: 24" x 16 1/2" x 14 1/2". Imprint Area: 13" x 4"*.

**Colors:** Hunter Green, Gray, White, Black, Royal, Red  
**Set-Up Charge:** Reg.: \$60.00; Special: FREE

	2
Reg.	\$242.55
<b>Special</b>	<b>\$204.44</b>



### ESP-RL21 | Collapsible Lantern Wireless Speaker

This duo will brighten their next adventure! The compact Revere Collapsible Lantern and Wireless Speaker reveals a lantern with a simple twist. Music control buttons included: play, pause, skip, volume control, answer call or hang-up, and redial. The lantern can change in brightness and mode. With D-ring handle for ease of carrying for a connection range of 33 feet, 2 hours play time, and 1 1/2 hour to recharge. Charging cable included. FDA certified. Add a little light and pizzazz to your pad printed logo. *Imprint Area: 1 1/4" x 1/2", either side*

**Color:** Black  
**Set-Up Charge:** \$55.00

	30	150
Reg.	\$14.63	\$13.99
<b>Special</b>	<b>\$14.03</b>	<b>\$13.03</b>

NEW





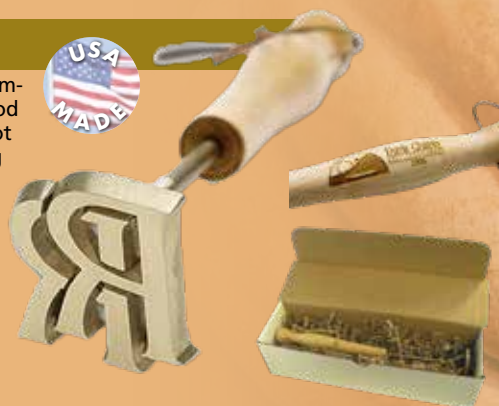
### BI3B | Custom Branding Iron

Looking for something different to set your brand apart from others? Get your logo custom-shaped on this brass iron for steaks, burgers, bread, and more. Features a natural hardwood handle and rawhide hanging strap. Comes up to temperature quickly when placed into hot charcoal or the flame of a gas grill. *Imprint Area:* up to 5" x 1/2" on handle. Custom tooling dimensions are up to 2 1/4" diameter or 2" x 3 1/2" for iron.

**Color:** Brass

**Set-Up Charge:** *Handle:* Reg: \$55.00; Special: FREE. Add \$1.88 each; *Die Cast/Iron:* \$290.00

	25	50	100
<b>Special</b>	<b>\$50.70</b>	<b>\$48.70</b>	<b>\$42.60</b>



### GFT21801 | Basecamp® Hanging Out Giftset

Clients can relax and enjoy the autumn colors when you provide this giftset with your brand on the bottle and hammock pouch. Features 40 oz. wide-mouth, double-wall vacuum insulated bottle and 210T nylon/polyester travel hammock with attached packable pouch for storage. People will remember your name while they're swinging and sipping in comfort. White crinkle paper in box standard, colors available for \$1.50 per box. Make a difference: Basecamp® will donate \$100,000 in 2021 to support Wounded Warrior Project's mission to honor and empower wounded warriors. To learn more, visit [woundedwarriorproject.org](http://woundedwarriorproject.org). *Imprint Areas:* Bottle: 2 1/4" x 2 1/4", Pouch: 5" x 4", Box: 8" x 5 1/2".

**Colors:** Bottle: Black, Navy Blue, Red, White; Hammock:

Black/Gray, Blue/Navy, Red/Red; Box: Black

**Set-Up Charge:** Bottle/Hammock: \$50.00, Box: \$75.00

	8
Reg.	\$67.09
<b>Special</b>	<b>\$61.49</b>



### Burger Boss Gift Set

101016-001 | Black 101016-101 | Natural

There is nothing more all-American than a great burger! Provide this set to valued clients with your brand lasered on the Cuisinart® XL BBQ spatula, ideal for lifting multiple burgers at a time. The mouth-watering seasonings will take your clients on a flavor journey through American, Mediterranean, and Cuban cuisine. Includes: Steakhouse style, Mediterranean style and Ancho Chile burger seasoning along with Roasted Garlic Everything Seasoning with recipe to make aioli dip for fries. Packaged in Burger Night gift box and handy shopper tote. Your brand will be bold at any BBQ! *Size (tote):* 11" x 15" x 5". *Imprint Area (spatula):* 1 1/2" x 1", engraved; (tote): 9" x 10", screened.

**Colors:** (tote): Black, Natural

**Set-Up Charge:** \$65.00

	8
Reg.	\$85.21
<b>Special</b>	<b>\$65.00</b>



### A96000 | Denim 3-Pocket Apron

Cook up a successful promo with your screen-printed logo on this three-pocket apron! It's a durable promotional product ideal for company picnics, tailgating events, or promotional BBQ's. Made of denim fabric accentuated by a tunnel design, adjustable neck, and waist ties. Features three large 9 1/2" x 7 1/2" pockets and measures 24" W x 24" H, making it adjustable to most sizes. The delightful material provides added comfort that your valued customers will want to use year-round. Give this out and get more exposure for your brand! *Imprint Area:* 6" x 10".

**Color:** Denim

**Set-Up Charge:** Reg.: \$60.00; Special: FREE

	25	100
Reg.	\$12.99	\$11.66
<b>Special</b>	<b>\$11.69</b>	<b>\$10.49</b>



## 1714 | Mini Campfire Mug Ornaments

Perfect for adding a bit of rustic charm to a Christmas tree or ornament stand for the holidays! Your pad-printed logo will be seen and admired each year when you offer this unique ornament. Each packaged in a decorative kraft gift box for ease in distribution and includes a twine cord for hanging. Constructed from durable carbon steel and finished with a speckled powder coating. A lovely cup of cheer! *Imprint Area: 1" x ¾"*.

**Colors:** Black, Blue, Green, Red, White  
**Set-Up Charge:** \$40.00

**84**  
 Reg. ~~\$5.46~~  
**Special \$4.90**



## OR2C | Custom Pewter Ornaments

Create your own high quality custom diecast, pewter-finish ornament, with incredible detail. This will be cherished for a lifetime! Full-size, fully modeled custom pewter ornament with 2- or 3-dimensional tooling. Includes a silver tinsel cord and a red holiday envelope. When you need to impress your clients with something substantial this ornament is the way to go. Create your own collector or annual series. *Custom Shapes:* up to 2 ¼" dia. or equivalent. *Optional Reverse Side Imprint:* add \$75.00.

**Color:** Pewter  
**Set-Up Charge:** 2-D: FREE;  
 3D: \$480.00

**50 100 250**  
**Special \$21.35 \$17.81 \$15.52**



BEST seller

## JK-9700 | InstaCake Holiday Cake in a Card

Send some holiday cheer to your clients with this new InstaCake Holiday Cake in a Card with your full-color brand on it. It's got everything customers will need to make a celebration cake in minutes: just add water, then microwave! Kits include: Vanilla Cake mix, Holiday-themed Sprinkles, Peppermint Frosting, Candy Cane Baking Case, Measuring Spoon, Mixing Spoon. Contains: Milk, Eggs, Soy, Wheat. Packaged and prepared in a peanut-free facility. Gluten-free options available; contact your promotional consultant for details. All items are made from the highest quality ingredients, including Madagascar Vanilla, real butter, and egg. Custom front and inside covers available. *Size:* 5" x 6.75". *Imprint Areas:* Stock Front: 2" x 1.2". *Custom Card:* 5" x 3.75".

**Set-Up Charge:** \$100.00

**25**  
 Reg. ~~\$11.54~~  
**Special \$10.49**



NEW

## 100714-XXX | Modern Sprout® One For One Tree Kits

Your brand on the bag for these Modern Sprout® kits will signify you care about the earth. Modern Sprout® is on a mission to help reforest the future—for every kit purchased, a donation is made to plant a tree. Tree Kits feature carefully selected seed types that will thrive in most parts of the country. The container is made in the USA out of up-cycled cow manure, which is 100% biodegradable and helps heal nutrient-depleted soil. Every tree planted helps offset the loss of millions of acres of forest. Be a part of reforesting the earth, growing a brighter future for all of us. *Imprint Area:* 4" x 4", bag.

**Trees:** 329 Sycamore, 328 Spruce  
 (Replace XXX in item number with tree choice, i.e., Spruce 100714-328)  
**Set-Up Charge:** \$65.00

**30**  
 Reg. ~~\$19.34~~  
**Special \$14.98**



## 1881 | Snowflake Wine Stopper & Tote

Uncork new business with this snowflake wine stopper & tote! Your logo silkscreened on the tote will complement the two-tone design. Made of 80 GSM non-woven polypropylene material with front and side storage pockets, an inner elastic strap, and handles. Included is a metal wine stopper with silicone rings to provide an airtight seal for keeping wine fresh. This tote and stopper fulfill your needs and show how much you appreciate your customers. Give a gift they will use every time they crack open a bottle! *Size (bag):* 4" x 14" x 3 ¾". *Imprint Areas (bag, front pocket):* 2 ½" x 5", (bag, back): 2 ½" x 10".

**Colors:** Hunter Green, Red, Royal Blue  
**Set-Up Charge:** \$55.00

**100**  
 Reg. ~~\$6.65~~  
**Special \$6.25**





### HCB1 | Hot Chocolate Bomb



Get your full-color brand on one of the hottest items of the Holiday Season! This Hot Chocolate bomb is not only delicious but an amazing food experience. Filled with delicious marshmallows, simply place the chocolate bomb in a mug, pour 10 oz. of hot milk over it and watch the bomb unravel before your clients' eyes. Fast and easy, this hot cocoa recipe is sure to make your customer's cold winter's day much better. Choose a stock design for the gift box and add your logo for effortless distribution. **Imprint Area: 1" x 2"**.

**Set-Up Charge:** \$50.00

**50**  
Reg. \$6.55  
**Special \$5.88**

Pair with a mug on page 22!

### JRG10XXX | Small Candy Jars

These classic glass jars are perfectly suited to proudly display your company's brand while sitting on the desk of your best customers. Ideal for continued use once the candy's been enjoyed, fill the jar with a variety of other items - cotton balls, jewelry, paper clips, or more candy to name a few. Be sure you sweeten your business dealings with choice of candies. Four color process imprint available, please contact your promotional consultant. **Size: 3 3/4" x 3 1/2" x 3 1/2"**. **Imprint Area: 1 3/4" x 1"**.

**Colors:** Jar: Clear. Candies: GMB Gummy Bears, LS Life Savers®, SF Swedish Fish®, replace the xxx with type of candy, i.e., JRG10GMB = Gummy Bears). Additional candy options available, contact your Promotional Consultant.

**Set-Up Charge:**  
Reg.: \$50.00; Special: FREE

**24**  
Reg. \$13.21  
**Special \$10.97**



### SLS160-XXX | Toffee & Turtles in Holiday Box

The perfect gift for the chocolate lovers on your list. Rich, mouthwatering 12-pieces of Pecan Turtles made with creamy caramel, full-flavored Southern pecans, and premium chocolate. The 12-pieces of toffee are made the old-fashioned way with plenty of dairy-fresh Wisconsin butter for a flavor that's almost impossible to find anymore. The silver gift box comes wrapped with a classic sleeve of your choice and contains eleven ounces of the best chocolate ever! Double the clients' sweet tooth pleasure with these delicacies. **Size: (Gift Box): 7 3/8" x 3 7/8" x 2 1/4"**. **Imprint Area: 2" x 1 1/2"**.

**Sleeve Designs:** STR Stipes, BPLD Black Plaid, BUB Bubbles, FC Full Color, PLD Red & Black Plaid, TRI Triangles, WVE Weave. (replace the xxx with type of design, i.e. SLS160WVE = Weave design)

**Set-Up Charge:** \$50.00

**12**  
Reg. \$36.95  
**Special \$34.25**

### PopStar Premium Popcorn Gift Set

**101019-001 | Black**

**101019-610 | Red**

Think of all the "Poppabilities" this personal mini popper and Urban Accents Golden Kernels gift set has for your clients with your brand in full view. Whether an appreciation or welcome program or a fun way to engage customers, employees, or a fun giveaway this gift set is a real pop star. Includes a 1 cup mini silicone popcorn maker and the world's finest popcorn. 1.75 oz Urban Accents Golden Kernels, Non-GMO project verified premium popcorn. Packaged together in a white gift box with choice of black or red silicone popcorn maker. **Imprint Area: 2" x 1"**.

**Colors:** Black, Red.  
**Set-Up Charge:** \$65.00

**50**  
Reg. \$16.37  
**Special \$15.54**



### L401 | Wisconsin Favorites

You can bet this heavy-duty Bamboo chopping board, firebranded with your logo or message, will be used and appreciated daily. Includes a half-pound block of Mild Cheddar and a five-ounce stick of tangy Beef Summer Sausage. The knife is included too. This ingenious high-quality board will impress guests and clients and carry your brand name for years to come. Requires refrigeration upon receipt. 15% of the profits will be donated to Habitat for Humanity. **Size: (Chopping Board): 8" x 5 3/4" x 1/2"**. **Imprint Area: 2 1/2" x 1 1/2"**.

**Set-Up Charge:** \$50.00

**18**  
Reg. \$29.95  
**Special \$27.49**





**SET-PW | Personal Wellness Kit**

NEW

This kit with your full color logo on the labels will be a token of appreciation for all your shining stars whether employees or clients. This customizable gift kit features retail-quality products at a price that's sensitive to current budget realities. The Soothing Stick, Lotion, Hand Sanitizer and SPF 15 Broad Spectrum Lip Balm provide comforting moisture and protection, all packaged together beautifully in your choice of three options. *Imprint Areas: Lip Balm: 1.75" x 1", Hand Sanitizer: 1.3" x 1.16", Lotion: 1.2" x 1.3", Soothing Stick: .86" x 1.85".*



**Colors:** Tubes: White. Caps: Olive Green, Yellow, Blue, Black, Pink, Green, Gold, Teal, Bright Pink, Silver

**Flavors/Scents:** *Lip Balm Flavors (all white caps unless noted):* Beeswax, Blackberry Smoothie, Breath Fresh, Cherry, Citrus, Coconut, Cranberry Orange, Iced Pear, Iced Pear w/Olive Green cap, Peppermint, Peppermint w/Blue cap, Pomegranate, Raspberry, Spearmint, Spearmint w/ Black cap, Strawberry w/Pink cap, Tropical, Vanilla Mint, Vanilla, Wildberry. *Lotion Scents:* Iced Pear, Lavender, Toasted Vanilla, Unscented. *Hand Sanitizer & Soothing Stick Scent:* Unscented

**Packaging Options:** Metallic Silver Bag, White Organza Bag, White Pillow Box

**Set-Up Charge:** Reg.: \$50.00; Special: FREE

100  
Reg. ~~\$8.40~~  
**Special \$7.55**

**100927-100 | R&R Sound Machine**

NEW

Ideal for privacy and concentration, this R&R sound machine will become something your clients didn't even know they needed but now can't be without or your business logo. It will lull them to a calm state in prep for a restful night or used in the office it will mask conversations making it perfect for office privacy. It can also be used as a low-cost way of blocking out environmental noises and distractions anywhere they are or travel to. There are 24 sounds to select from in this compact sleek design sound machine. With small size and light weight, the portable size is easily packable. There is a headset audio option as well that won't disturb others. Comes in gift box. *Size: 4.53" x 4.52" x 2.4". Imprint Area: 2.5" x 2".*

**Color:** White

**Set-Up Charge:** \$65.00

12  
Reg. ~~\$62.48~~  
**Special \$44.98**

**HAPPYWAX | Outlet Plug-in Wax Warmer Kit**

NEW

Give something that is unique with your logo printed on it, perfect for home or office. This plug-in warmer kit includes no-scrape silicone wax melt dish with wax melts that are 100% all-natural soy and paraffin, paraben, and phthalate free, making them sustainable and biodegradable. Warmer creates a warm glow and mood lighting. Kit includes: One wax warmer, two scents, all packaged in a white gift box for easy distribution. *Size: 3" x 4". Imprint Area: 1 1/2" x 2".*

**Color:** White Marble

**Scents:** Calm Lavender, Vanilla Sandalwood.

**Set-Up Charge:** \$50.00

12  
Reg. ~~\$36.00~~  
**Special \$28.00**

**A786 | Fashion First Aid Kit**

First aid kits are thoughtful gifts they will keep handy. Made of durable printed 210D polyester, this convenient kit features a zipper top closure to keep items safe. Amenities include 2 antiseptic towelettes, 1 ibuprofen, 1 antacid, two 3/4" bandages, and 1 mini bandage. These compact pouches are ideal for office, travel, sports and more! Available in several bold patterns. *Size: 6" x 4 1/2". Imprint Area: 3" x 3"*

**Patterns:**

Black Lattice,  
Black Modern  
Plaid, French  
Circle, Leopard,  
Metro Dots, Navy-  
Sailing-Compass,  
Red/White/Orange-  
Circles, Royal  
Distressed Dots, Royal/Polka  
Dots, Floral

**Set-Up Charge:**

Reg.: \$60.00; Special: FREE

100  
Reg. ~~\$3.58~~  
**Special \$2.73**



BEST seller

**SET-ST | Stick Trio**

NEW

This stick trio kit comes equipped with three unscented mindfully formulated sticks made with responsibly sourced ingredients to meet all skin's needs. Containing a Soothing Stick, Hydra Stick, and Cooling Stick, this kit will keep client's skin hydrated, soothe irritations, and provide cool relief to minor aches and pain. Imprinted with label of all sticks. Packaged in a sheer, white organza bag for a touch of class. *Sizes: 0.5 ounces each. Imprint Area: .86" x 1.85"*



**Set-Up Charge:** Reg.: \$50.00; Special: FREE

100  
Reg. ~~\$10.00~~  
**Special \$8.75**



## COUTO21 | Fun On The Go Games – 4 In A Row

Pass the time on a long car, plane, or bus ride the way they did before the invention of video games, screens, messaging, and cellphones with our Fun On the Go Gaming collection! This classic Four in a Row game includes a 6" x 7" drop-in gaming board with a collection of red and blue chips. Take turns dropping chips into the board and try to get four in a row -- but you'll need strategy! Kit includes a pinewood or MDF board and a non-woven polypropylene drawstring storage bag. Add your school, sports team, organization or company logo or emblem to customize the front of the bag. Take a trip back to yesteryear! Rated for ages 3+. *Imprint Area: 6 1/2" x 6 1/2" front of bag.*



**Color:** Bag: Black  
**Set-Up Charge:** Reg.: \$60.00;  
Special: FREE

	<b>20</b>	<b>80</b>
Reg.	\$25.52	\$23.14
<b>Special</b>	<b>\$23.30</b>	<b>\$20.40</b>



NEW

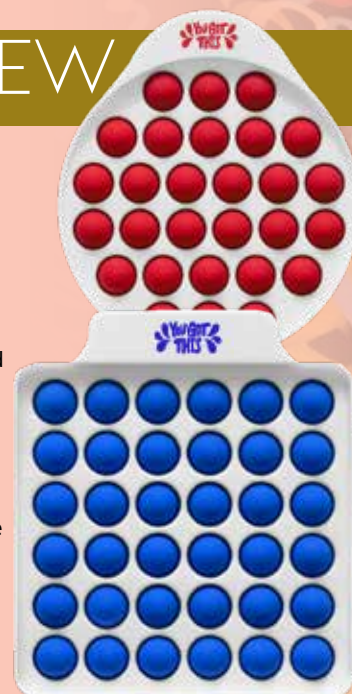
## Push Pop Bubbles VOUTO25 | Round VOUTO26 | Square

NEW

This year's hottest trend! A game and fidget toy all in one! Relieve the stress of clients of all ages with these push pop bubbles with your brand pad printed on the front. Press bubbles down for a fun way to release stress. Encourages focus and self-soothing for users with anxiety, attention disorders, and boredom. Game instructions included. Great for adults and kids - CPSIA rated for ages 3+. *Size: 5" x 5 5/8" x 5/8". Imprint Area: 1 1/2" x 1 1/2".*

**Colors:** Red, Lime, Black, Blue  
**Set-Up Charge:**  
Reg.: \$50.00; Special: FREE

	<b>100</b>
Reg.	\$2.87-
<b>Special</b>	<b>\$2.30</b>



## 78123 | Building Blocks Stackable Containers

Start with the fundamentals when it comes to promoting your brand with these awesome stackable containers in a shape that we all remember! Each set includes a totally stackable containers, one large and two small. Design features include side clips for a tight seal. Great for everything from picnic snacks to pens, tools, and toys! *Size: (Large): 6" x 3 3/4" x 2 3/4"; (Small): 2 3/4" x 2 3/4" x 2". Imprint Area: 1 1/2" x 1 1/2".*

**Colors:** Black, Blue, Green, Red  
**Set-Up Charge:** Reg.: \$40.00;  
Special: \$25.00

	<b>50</b>	<b>250</b>
Reg.	\$17.47	\$13.21
<b>Special</b>	<b>\$13.99</b>	<b>\$9.99</b>



## JK-383OSL | Silver Glitter Desktop Photo Frame

Add some shimmer to your next marketing campaign with this unique desktop photo frame! It's made of acrylic plastic, accommodates up to a 4" x 3 1/4" picture, and is liquid-filled featuring dramatic multi-shape silver glitter. Just shake it, watch as the movement catches their eye and add a glimmering effect that will make the memory even more special. Great keepsake for their work desks or shelves at home. What a great way to make your clients feel special! *Size: 4 1/2 x 3 3/4" x 1". Imprint Area: 2 1/2" x 1".*

**Color:** Clear  
**Set-Up Charge:** \$59.00

	<b>50</b>
Reg.	\$6.29-
<b>Special</b>	<b>\$5.24</b>



## 8999 | Adult Coloring Book with Colored Pencils

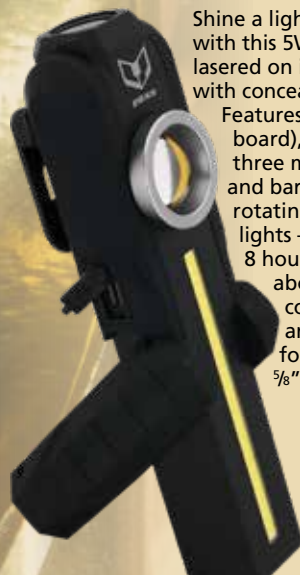
NEW

Surprise everyone with something new and unique like this adult coloring book with colored pencils! Many will be surprised at the hours of fun this could unlock for them. It's a therapeutic activity that allows minds to drift away from the stresses of life and into the beauty. Features the Art of Relaxing coloring book with pattern and mandala coloring pages and 12-piece drawing set (10 colored pencils, eraser and sharpener). Make this a part of your next promotion to draw more people to your place of business and color your sales! *Imprint Area: (Book): 5" x 4"; (Drawing Set): 2 1/4" x 2".*

**Set-Up Charge:** Reg.: \$80.00; Special: \$40.00

	<b>50</b>	<b>250</b>
Reg.	\$10.05	\$7.60-
<b>Special</b>	<b>\$7.95</b>	<b>\$5.75</b>



**FL198 | Rechargeable Leanback 5W COB Worklight**

Shine a light on your next promotional campaign with this 5W COB worklight with your brand lasered on it. Made with ABS/Aluminum housing with concealed kickstand for hands free use.

Features 3W LED and two 5W COB (chip on board), function buttons switching between three modes of top (LED), circular light (COB), and barrel (COB). Includes belt clip with built-in rotating hook, magnetic base, and indicator lights – blue for battery levels. Runtime up to 8 hours for LED and 3 hours for COB with about 4 hours of charge time. Also contains built-in rechargeable battery and Micro USB charging cable. Gift boxed for easy distribution. *Imprint Area: 1/2" x 5/8" top front, above light.*

**Color:** Black  
**Set-Up Charge:** \$55.00

**24**  
Reg. \$20.59  
**Special \$17.99**

**FL200 | SlimHandle 5W Rechargeable Spot & COB Worklight**

This worklight may be small but it is mighty, just like your business, with both a spotlight and side light. Function button switches between three modes: spotlight, high (barrel), low (barrel), strobe. Features aluminum housing, magnetic base, slim metal clip. Includes 150 lumens (spotlight) and up to 400 lumens (side). Approximately 1 1/2 - 2 hours runtime with about 3 hours of charge time. Includes built-in rechargeable battery and Micro USB charging cable. Includes gift box.

*Imprint Area: 2.25" x 1".*

**Color:** Black  
**Set-Up Charge:** \$55.00

**24**  
Reg. \$22.89  
**Special \$19.99**

**T309TS | Portable 24-Piece Tool Set**

Clients can keep everything handy, including your brand, in this portable 24-piece tool set! The compact case is great for storing in vehicles, kitchen drawers, or recipients' workshops. The set contains one comfort grip universal handle made of carbon steel, eight sockets (5 mm - 12 mm) and two eight-piece screwdriver bit sleeves with Phillips, flathead, hex and torx bits. Add your name and logo using a four-color digital imprint with doming on the case to extend your brand's reach and lend a helping hand to your target audience! This set could be the "fix" your clients are looking for. *Size: 5 1/2" x 2 3/4" x 1 3/8". Imprint Area: 1 1/2" x 1/2".*

**Color:** Black/Grey  
**Set-Up Charge:**  
Reg.: \$55.00; Special: FREE

**50**  
Reg. \$7.50  
**Special \$6.39**

**Mi8801 | Pocket Screwdriver - Flat Tip Blade**

This 1/8" flat head slotted mini screwdriver can fix your next marketing campaign! This fixed #0-1 standard flat blade (flat head) slotted mini screwdriver with button top is the leader of mini flat head screwdrivers. It features a nickel-plated, heat-treated, quality tempered steel blade. Assure clients that your brand is always there to lend a hand when they need it most! *Imprint Area: 1 13/16" x 3/4".*

**Colors:** Button Top: White, Black, Blue, Yellow, Orange, Red. Screwdriver: Black, Blue, Metallic Blue, Orange, Red, Translucent Blue, White, Yellow

**Set-Up Charge:** \$60.00

**150**  
Reg. \$1.12  
**Special \$1.05**



BEST seller

**BC8805 | Basecamp® Fire Starter Multi-Tool**

This multi-tool is just what you need to get your sales fired up and clients' campfires going! It's an 11-in-1 tool made of 420 stainless steel with an anodized aluminum handle. Includes needle nose and regular pliers, wire cutters, a locking knife, can opener, flat screwdriver, file, wood saw, bottle opener, seat belt cutter, and a fire starter. It can boldly show off your lasered company name or logo. If you cater to campers, this is a great way to become a trusted name among them and tag along for their adventure! Make a difference: Basecamp® will donate \$100,000 in 2021 to support Wounded Warrior Project's mission to honor and empower wounded warriors. To learn more, visit [woundedwarriorproject.org](http://woundedwarriorproject.org). *Size: 6 7/16". Imprint Area: 1 1/2" x 3/16".*

**Color:** Black  
**Set-Up Charge:** \$50.00

**40**  
Reg. \$26.39  
**Special \$21.99**





## LUGSPTOR | Luggage Spotter

Your brand will travel farther with this must-have travelling accessory. Comes in a multitude of color choices and has a hook and loop closure for attaching to a carry handle or strap. It is made of 420 denier nylon, features a patented inside ID pocket, and is cushioned for ergonomic support. Add your logo and make your business and your clients' suitcases, golf bags, and other luggage stand out from the crowd! Color Surge 4-color process available, please contact your promotional consultant. Size: 5 1/2" X 6". Imprint Area: 3 1/2" x 2".

**Colors:** Lime, Yellow, Red, Orange, Blue  
**Set-Up Charge:** Reg.: \$60.00; Special: FREE

BEST  
seller

Reg. ~~125~~  
~~\$2.30~~  
Special **\$1.89**



## Westbridge Travel Collection C342 | Key Keeper VAND006 | Two-Tone RFID Leather Money Clip/Card

Make a lasting brand impression on products that will be in customers' hands on a daily basis with the genuine full-grain leather Westbridge collection! The handy key keeper features, brass hardware, and a lobster clip for attaching to a bag. Deter hackers and identity thieves with the RFID protected money clip and card holder! Holds up to 10 credit cards and includes handy snap to keep everything in place. Each piece is inserted into an elegant, high-quality gift box before shipping, making it a memorable gift for any occasion. Imprint Areas: C342: 1.5" x .5"; VAND006: 1.5" x 1".

**Colors:** C342: Black, Tan.  
VAND006: Black/Tan, Tan/Brown  
**Set-Up Charge:** Reg.: \$110.00;  
Special: FREE

	C342 25	VAND006 13
Reg.	\$11.99	\$20.94
Special	<b>\$9.99</b>	<b>\$17.62</b>



## VOUTO22 | Heathered Fold Up Blanket

Wrap up new customers when you make this fold-up blanket your next giveaway! It's made of brushed-back, heathered knit material and features an attached handle for easy carrying. It easily folds within itself using the hook and loop closure, making it great for travel. Add your embroidered company name or logo to the front flap. Surprise clients with this amazing gift! Size: 50" x 60". Imprint Area: 5" x 3". Price includes 5,000 stitches. Contact your Promotional Consultant for additional stitch charges.

**Colors:** Black, Gray, Royal  
**Set-Up Charge:** Reg.: \$60.00; Special: FREE

	12	48
Reg.	\$21.49	\$18.89
Special	<b>\$19.19</b>	<b>\$16.89</b>

## 748CC | Polar Color Change Ice Scraper

Show your clients you are different and stand out from the competition with this color changing 7" ice scraper with clear blade with your brand screened on the handle. When it gets cold outside the ice scraper patented rubber grip handle changes color. Ideal for removing snow, ice, and other debris from windshields. Stores easily in glove compartments, side of car doors, or under the seat. You can help clear their way and brighten up winter with this scraper during your next promotion. Imprint Area: 1 3/8" to 1" x 1 1/2" grip side.

**Colors:** Frost to Blue, Yellow to Green,  
Blue to Violet, Light Green to Blue  
**Set-Up Charge:** \$55.00

Reg. ~~200~~  
~~\$1.83~~  
Special **\$1.38**



## Fab Fresh Spray FABFRESH2 | 2-Ounces FABFRESH4 | 4-Ounces

The perfect travel companion! Keep fabric items smelling fresh with Fabric Freshening Spray. Great for in between washes that will get your brand on the full color label and into the palm of your clients' hands! Not intended as a sanitizer or replacement for washing items. Imprint Area: 1.7018" x 1.8479".

**Colors:** Labels: Clear, White  
**Scents:** Fresh Cucumber, Relaxing Lavender,  
Sparkling Peach  
**Set-Up Charge:** \$55.00

	FABFRESH2 100	FABFRESH4 50
Reg.	\$2.63	\$4.11
Special	<b>\$1.95</b>	<b>\$3.05</b>







### EL192 | LED Desk Lamp/ Wireless Charger

Light up your next marketing campaign! This lightweight, soft touch design LED lamp combined with a 10W wireless charging pad features a non-slip phone ring and non-slip bottom pads with your brand showcased. Light Output: 18 lumens. Includes 3 brightness LED levels for warm, white, and low lighting modes, 360-degree flexible neck for optimum light adjustment and collapsible for travel/storage. DC Input: 5V/2A. Wireless Output: 5V/1A. Blue indicator light on base. Includes Micro USB charging cable, wall charger not included. *Size:* 3 3/8" x 10" x 6 1/4". *Imprint Area:* 1 3/4" x 1 3/4" top of charger pad.

**Color:** White  
**Set-Up Charge:** \$55.00

**24**  
Reg. ~~\$24.09~~  
**Special \$20.99**



### EAC-AM21 | Avalon Mouse Pad with Wireless Charger

Charge up your brand with this mouse pad plus wireless charger. The device charges users' items wirelessly when a compatible device is placed on the charging pad. Constructed of soft-touch faux leatherette and features 5W Qi-equivalent compatible wireless charger mousepad with foreign object detection functionality. Output: 5W; Input: 5V/2A. Includes Micro USB cable. FCC certified. Customize with your debossed name or logo before your next event for added brand exposure. Perfect advertising tool for your company! *Size:* 10 3/8" x 7 1/2" x 1/8". *Imprint Area:* 3 1/2" x 2 1/2" debossed top.

**Color:** Black  
**Set-Up Charge:** \$75.00

**50** **200**  
Reg. ~~\$13.00~~ ~~\$12.00~~  
**Special \$12.25 \$11.30**



NEW

### PZ-435 | Hamilton 3-Ring Binder

Stay organized with this secure zippered padfolio featuring a 1" black metal three-ring binder, gusseted file pocket that easily fits a full-size tablet, three additional slant pockets, and two wide-body penholders. Also includes 8.5" x 11" writing pad with matching privacy cover. Ring in new promotional opportunities for your brand! *Size:* 10" x 13 3/4" x 1 1/2". *Imprint Areas:* Debossed: 4" x 4". Screened: 5" x 6".

**Colors:** Black, Navy Blue, Tan  
**Set-Up Charge:** Debossed: \$75.00, Screened: \$62.50

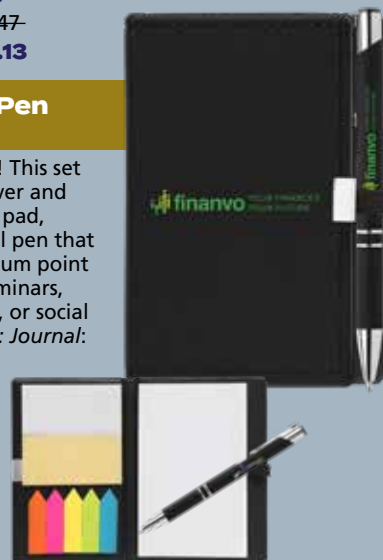
**20**  
Reg. ~~\$27.47~~  
**Special \$20.13**

### NOD-C | Note Caddy & Tres-Chic Pen Gift Set

Create a stylish and sophisticated personal gift! This set will show off your logo on both the journal cover and the Tres-chic softy pen. Features a 3" x 5" note pad, sticky notes, sticky flags, and a soft-touch metal pen that is sure to become a favorite. Pen features medium point black ink. Create a thoughtful giveaway for seminars, trade shows, conventions, and other corporate, or social events. *Size: Journal:* 3.9" x 5.59". *Imprint Areas: Journal:* 2.5" x .42", *Pen:* 2.283" x .276".

**Colors:** *Journal:* Black, Blue, Red. *Pen:* Black.  
**Set-Up Charge:** FREE

**100**  
Reg. ~~\$4.49~~  
**Special \$3.99**



NEW

### 100938-231 | Auden Bamboo Lap Desk

This bamboo lap desk will be their work from anywhere solution. Features a bamboo work surface with vented tray allowing proper laptop ventilation, sized to hold a 15" laptop with device ledge to secure their device in place. Integrated simulated leather mouse pad, built in phone dock enables use to watch videos, participate in virtual meetings, or FaceTime friends hands-free while they work on their laptop. Branded either lasered or printed with your name or logo so your business will always be seen and appreciated. A great gift for office, home, or dorm rooms. Comes in gift box. *Size:* 11.37" x 20.37" x 2.3". *Imprint Area:* 3" x 1", engraved or screened.

**Color:** Bamboo  
**Set-Up Charge:** \$65.00

**8**  
Reg. ~~\$71.46~~  
**Special \$59.98**



NEW





## SNC3A | BIC® Adhesive Cube

Adhere your brand to this noteworthy promotional campaign by creating a bold and vivid three-dimensional branded promotion. This unique item displays your message on all four sides with a full-color image means limitless possibilities to promote your brand. Integrate your school, sports team, organizational or company logo, emblem, or message on the individual tear-away sheets too! Memo pages stick to walls, windows, filing cabinets and more. Add form, function and style to any waiting area, desktop, or cubicle! Size: 3" x 3" x 3". Imprint Area: 3" x 3".

**Color:** White

**Set-Up Charge:** \$50.00

Reg. ~~\$7.83~~  
**Special \$7.24**



BEST seller

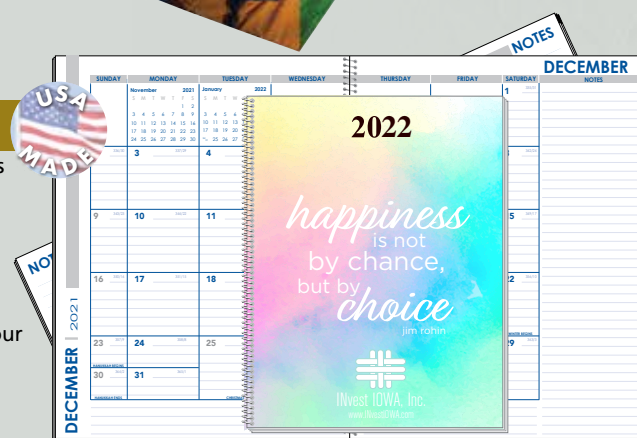


## 7050 Small Monthly Planner/Journal Combo

Clients can keep their notes and schedules in one convenient place with his small monthly planner/journal combo. Features 32-page (14-month Dec. 2021 – Jan. 2023) planner made of 60 lb. offset paper stock with two areas for note taking also includes 16 additional journal pages with ruled lines in the back, 48 pages total! Clear coating to protect the imprint on either pre-printed stock covers with one color imprint or create your own custom full-color cover. Features a gray/blue pad with white spiral binding. A new smaller size that is convenient for clients to carry with them. Check with your promotional consultant on larger sizes. Size: Closed: 5 1/2" x 8 1/2", Open: 11" x 8 1/2". Imprint Areas: Stock Covers: 5" x 3". Custom: 5 1/2" x 8 1/2".

**Stock Designs:** Balloons, Blue Weave, Boards, Farm, Flag, Leather, Marble, Medical, Mountains, Open Road, Slate, Tiny Houses, Watercolor  
**Set-Up Charge:** FREE

	<b>100</b>	<b>150</b>	<b>250</b>	<b>300</b>	<b>500</b>
Reg.	<del>\$5.55</del>	<del>\$4.55</del>	<del>\$3.73</del>	<del>\$3.51</del>	<del>\$3.04</del>
<b>Special</b>	<b>\$5.34</b>	<b>\$4.38</b>	<b>\$3.59</b>	<b>\$3.38</b>	<b>\$2.92</b>



NEW size!!

## V7870 | Press-N-Stick™ Calendars

A powerful advertising vehicle that you can stick anywhere! Perfect size for easy distribution and can be easily mailed. The standard Press-N-Stick™ comes with a 14-month calendar pad. Imprint Area: Varies with shape selection. Please check with your Promotional Consultant.

**Vinyl Colors:** Beige, Black, Brown, Burgundy, Canadian Blue, Forest Green, Gray, Kelly Green, Gold, Navy, Orange, Purple, Recycled Black, Red, Royal, Silver, Teal, White, Yellow. Translucent: Blue, Lime, Orange, Purple, Teal.

**Shapes:** Animals/Agriculture, Food/Entertainment, Home Building, Medical, Multi-Use Shapes, Patriotic, Religion, Services, Sports, Technology, Transportation, Western

**Set-Up Charge:** \$21.00, initial order

	<b>150</b>	<b>250</b>	<b>500</b>	<b>1000</b>	<b>2500</b>
<b>Special</b>	<b>\$0.69</b>	<b>\$0.66</b>	<b>\$0.53</b>	<b>\$0.48</b>	<b>\$0.43</b>

BEST seller



## Good Value Calendars

**Stapled**

**7232**

**7270**

**7205**

**7273**

**Spiral**

**7032**

**7070**

**7005**

**7073**

**Picture**

**National Day**

**Buck Wear**

**Muscle Thunder**

**Healthy Living**

BEST seller



Impress and inspire with dynamic images from a variety of subjects and themes. Both spiral and stapled 13-month appointment style calendars available. Contact your Bankers Promotional consultant for full selection and information on additional Good Value styles. Size: Open: 11" x 19"; Closed: 11" x 10". Imprint Area: 10 3/16" x 1 3/8" on drop ad.

**Set-Up Charge:** FREE

	<b>150</b>	<b>250</b>	<b>500</b>	<b>1000</b>
<b>Stapled</b>	<b>\$1.41</b>	<b>\$1.35</b>	<b>\$1.31</b>	<b>\$1.29</b>
<b>Spiral</b>	<b>\$1.50</b>	<b>\$1.44</b>	<b>\$1.41</b>	<b>\$1.37</b>





**JK-9055 | Swed-ISH Dishcloth****NEW**

These Swed-ISH rectangular dish clothes are made from part natural fibers and part sponge. They are reusable, biodegradable, and sustainable, a cross between a sponge, a paper towel, and a dishcloth. Replaces up to 15 rolls of paper towels. They air dry quickly so bacteria and germs have less of a chance to grow on them than a traditional sponge. Choose from stock designs or create your own to keep your full color brand always in hand!  
**Size:** 7" x 8". **Imprint Areas:** Stock Designs: 5" x 1 1/2". Custom: 7" x 8".

**Color:** White  
**Designs:** Apple, Lemon, Watermelon, Custom  
**Set-Up Charge:** \$59.00

**Reg.** ~~\$2.89~~  
**Special \$2.42**

**ECO****HW96UK | Chun Utensil Gift Set****NEW**

Nowhere is more suited to the pure, natural feel of bamboo than the kitchen, and this gift set brings all the necessary tools together - spoon, spatula, and scraper. Bamboo contains natural anti-microbial properties. As natural product, tone variations may occur. Hand washing recommended. FDA Certified. Packaged in mesh bag.  
**Imprint Area:** 2" x 3/16", centered handle front.

**Color:** Bag: Black  
**Set-Up Charge:** \$55.00

**Reg.** ~~\$9.08~~  
**Special \$8.14**

**250**  
~~\$7.92~~  
**\$7.44**

**ECO**
**4-Pack Slate Coasters**  
**COA-SLATE-R4 | Round**  
**COA-SLATE-S4 | Square**

Protect tables, desks, and countertops with this nonstop advertising addition. These rustic slate coasters are a perfect addition to your next event or marketing campaign with full color direct branded logos. The course stone brings an element of the natural world to their indoor space. Each with rubber feet to protect surfaces and individual gift boxed for immediate distribution. **Sizes:** Round: 4" diameter, Square: 4" x 4". **Imprint Areas:** Round: 2 1/2" diameter, Square: 3 1/2" x 3 1/2".

**Color:** Black/Dark Grey  
**Set-Up Charge:** \$46.88

**Reg.** ~~\$8.40~~  
**Special \$7.56**

**2312 | Bamboo Slide-Lid Container Gift Box Set**

This gift will surely get noticed along with your screened brand on display! This gift box set includes two bamboo containers with a magnetic sliding lid to provide a tight closure. Store your kitchen seasonings, salt, bath salts, or office supplies like paper clips and rubber bands. This makes a great gift and can be used as customer appreciation, employee recognition, company meetings, corporate milestones, retirements, and anniversaries. The gift box is completely recyclable and ready for distribution with your name or logo on the top. Other imprinting options are available, please check with your Promotional Consultant. **Sizes:** Containers: 3 3/8" diameter x 2 3/4", Gift Box: 11 3/4" x 6 1/8" x 3 1/16". **Imprint Area:** Containers: 3" x 3", Gift Box: 3 1/2" x 3 1/2" left center, 5" x 3 1/2" center, 5" x 2" flap. Price includes one color/location on gift box and laser engraved on top of each container.

**Set-Up Charge:** \$75.00

**Reg.** ~~\$23.95~~  
**Special \$22.25**

**144**  
~~\$21.95~~  
**\$19.95**

**ECO****JK-1505 | Air Plant****NEW**

Perfect for any home, office, school, or desk with your pad printed brand on it. They are low maintenance and are a nice green addition to brighten any setting regardless of the season. This little favor has a WOW factor! Air plant size and color may vary. Individual mailers are available, contact your Promotional Consultant for details. **Size:** 2" x 4" x 2". **Imprint Area:** 1 1/2" x 1 1/2".

**Color:** Natural  
**Set-Up Charge:** \$59.00

**Reg.** ~~\$10.24~~  
**Special \$8.39**

**Caring for your Air Plant**

\* please allow good air circulation

\* never place in soil





**TBCO28 | Folio Tech Organizer**

Your customers are going to love this electronics organizer travel case with 4-Color process branding! Pouch is made from water-repellent material and has compartments for everyday tech items, wallet cards, keys, money, pens, and more. It has a tabbed elastic strap with metal hook for easy closure. It also can be used as makeup bag and baby healthcare grooming kit, it's good for travel and storage. Size: 9" x 4 1/4" x 1 1/2". Imprint Area: 1 13/16" x 1".

**Color:** Gray  
**Set-Up Charge:**  
 Reg.: \$50.00; Special: FREE

	<b>25</b>	<b>100</b>
Reg.	\$18.80	\$17.50
<b>Special</b>	<b>\$17.06</b>	<b>\$15.33</b>

**UQ20755 | Illuminating TWS Earbuds**

These illuminating TWS earbuds feature up to 3 hours of playback time at 100% volume. When the earbuds are not in use, they can be charged in its compact charging/carrying case. Case illuminates while charging or by pressing the button between the earbuds, inside the case. Micro USB charging cable included. Capacity (earbuds): 35mAh / 3.7V (0.1295Wh); capacity (case): 300mAh / 3.7V (1.11Wh); wireless range: 10m; playing time: 3 hours on max sound. Brighten up your next marketing campaign with these earbuds that will have clients dancing in the aisles! Other imprinting options are available, please check with your Promotional Consultant. Imprint Area: Lid: 1 3/4" diameter, screened. Speaker: 2" x 1 1/16" side or 7 5/16" x 1 1/16" wrap, engraved.

**Color:** Silver  
**Set-Up Charge:** \$50.00

	<b>50</b>
Reg.	\$36.19
<b>Special</b>	<b>\$30.09</b>

**EPB-EL21 | Elite Power Bank**

You can bank on this item being a success! A sleek 10,000mAh capacity power bank capable of extremely fast charging due to 18W Power Delivery for USB-C / lightning ports and quick charge for the USB output. Offering dual outputs, USB-C and lightning, for versatile functionality. Includes on/off power button and power level indicator lights so it's easy to tell when charging is complete. Includes Micro USB charging cable. Provide this easy to carry power bank with your pad printed logo or message on it so you can keep your clients charged and in contact with you from anywhere. Imprint Area: 2" x 3 1/2".

**Color:** Black  
**Set-Up Charge:** \$55.00

	<b>30</b>
Reg.	\$24.50
<b>Special</b>	<b>\$19.03</b>

**IT175 | Light-Up-Your Logo Cable****NEW**

Enhance your promotional efforts with the Light-Up-Your-Logo 10' 2-in-1 Cable. Includes USB to USB Type C, duo 5-pin lightning and Micro USB cables. Power/Technology: Input: 5V; Output: 2A. Note: USB C is for charging only, no data transfer. Add your logo to light up your brand. Size: 10-foot. Imprint Area: 7/8" x 7/8".

**Colors:** Black, Reflex Blue, Silver  
**Set-Up Charge:** \$55.00

	<b>50</b>
Reg.	\$7.75
<b>Special</b>	<b>\$6.99</b>

**95035 | Powerjam Kit****NEW**

Combining this versatile power bank with this wireless speaker is a guaranteed crowd pleaser. Jam sessions will be powered all night long with Boxanne Wireless Speaker & Octoforce 2.0 8,000mAh Wireless Power Bank. With incredible sound thanks to its built-in subwoofer, the pocket-sized Boxanne packs an enormous punch. Dual-sided, full-color printing gives any brand double the exposure while its built-in microphone makes sure calls are just a button away. With the power bank customers will experience an effortless way to re-energize devices with an 8000mAh capacity premium lithium-ion battery. Includes your brand on both items and the gift box. Imprint Areas: Power Bank: 5.12" x 2.56", Speaker: 1.61" x .35", Packaging: 3.16" x 2.61"

**Colors:** Black, White  
**Set-Up Charge:** FREE

	<b>3</b>
<b>Special</b>	<b>\$59.50</b>







### Adidas Fleece Sweatshirts A432 | Hooded A434 | Crewneck

Warm up any crowd with these fleece sweatshirts! Both are made of 8.5 oz., 70/30 BCI cotton/recycled polyester with cuffed sleeve and hem with the Adidas logo on right arm. Hooded sweatshirt features 3-panel hood. Promote your business' sense of style with these warm items, nothing better for relaxing in. Make use of great garments for a variety of events.

**Sizes:** XS-4XL

**Colors:** Dark Grey Heather, Black, Collegiate Royal, Red, Collegiate Navy

	A432		A434	
Screened	24	144+	24	144+
	\$40.60	\$39.75	\$35.50	\$34.60
Embroidered	12	24+	12	24+
	\$43.50	\$41.25	\$38.25	\$36.00

Pricing through XL. Add \$0.75 each for 2XL-4XL.



### North End Two-Layer Fleece Soft Shell Hooded Jacket 88166 | Men's 78166 | Ladies'

Break out the shell and promote your company!! These two-layer fleece bonded soft shell hooded jackets feature a water-repellent finish; 96% polyester/4% spandex bonded w/100% polyester anti-pill fleece; 2-layer performance stretch soft shell, 7.5 oz./yd 255 GSM. Includes attached hood and fleece chin guard; front yoke with asymmetrically styled seams; right chest pocket with contrast reverse coil zipper; contrast reverse coil zipper at center front; articulated raglan sleeves; adjustable cuffs with tabs; two lower concealed pockets with contrast coil zippers; audio port access through lower left pocket; thermal retention shockcord at hood and hem. Great items to brand with your embroidered logo for employees and valued customers.

**Sizes:** 88166: S-5XL. 78166: S-3XL

**Colors:** Black, Classic Navy, Fossil Grey\*, Molten Red, Crystal Quartz\*\*. (\* only available in Men's, \*\* only available in Ladies'.)

	12	24+
Special	\$69.25	\$67.00

Pricing through XL. Add \$3.40 each for 2XL, \$5.00 for 3XL, \$6.75 for 4XL, \$8.35 for 5XL.



Packable!

### Core365 Prevail Packable Puffer Vest CE702 | Men's CE702W | Ladies'

Whether clients are putting up their tent, kicking back by the campfire, or tailgating at an event, these durable and packable vests will make sure the recipient stays toasty-warm and your logo will be prominent. Vest features separate storage pouch, body made of 1.2 oz./yd2/39 GSM, 100% Polyester with water-resistant finish. Lining made of 100% Polyester Insulation made of 80 GSM thermal poly fill in body and sleeves. Center front zipper with autolock slider and reflective toggle, includes lower pockets with invisible zippers with stretch binding at sleeve and hem. A perfect cold-weather layer that is packable for added convenience.

**Sizes:** CE702: S-5XL. CE702W: XS-3XL

**Colors:** Colors: Black, Carbon, Classic Navy, Classic Red, True Royal

	12	24+
Special	\$46.75	\$44.50

Pricing through XL. Add \$3.40 each for 2XL, \$5.00 for 3XL, \$6.75 for 4XL, \$8.35 for 5XL.

Embroidered: Pricing includes up to 5,000 stitches on left chest, 3 1/2" x 4". For each additional 1,000 stitches add \$0.45 each.

Digitizing: \$50.00 up to 10,000 stitches. Screened: Pricing includes one color on full front or back, 11" x 13".

For each additional color add \$0.60 each. Set-Up Charge: \$20.00 per color. For second location, add \$1.85 each.



## PRM450OTD | Unisex Tie-Dyed Hooded Sweatshirt



This Independent Trading Tie-Dye hoodie will attract clients to your brand. Tie-Dye is a hot trend and this hoodie is a must have. Hoodie is a 9 oz., 80/20 ring spun cotton/ poly blend with 100% cotton face. Features a jersey lined hood, split stitch double needle sewing on all seams, twill neck tape with sewn eyelets. The tie-dyeing process gives each garment a unique character. Please allow for slight color variation in production and washing.

**Sizes:** XS-3XL

**Colors:** Tie Dye Black, Tie Dye Aqua Blue, Tie Dye Navy, Tie Dye Pink, Tie Dye Cotton Candy, Tie Dye Sunset Swirl

<b>Screened</b>	<b>24</b>	<b>144+</b>
	<b>\$38.75</b>	<b>\$37.75</b>
<b>Embroidered</b>	<b>12</b>	<b>24+</b>
	<b>\$41.75</b>	<b>\$39.75</b>

Pricing through XL. Add \$2.40 each for 2XL and 3XL.



## 1500 | Heavyweight Crew Sweatshirt

Allow this heavyweight sweatshirt to be a standout item at your next event! Crew sweatshirt with rib knit side gussets, neck, cuffs and bottom band, back half-moon patch, front V-Notch, two-piece sleeve and cover stitched seams. It's made of luxurious sueded 70% cotton, 30% polyester and 11oz/yard 2 3 end fleece, Includes big and tall sizing. Add your brand name or logo and give this to visitors at your tradeshow booth or outfit your staff with this durable item.

**Sizes:** XXS-6XL, LT-6XLT

**Colors:** Black, Red, Forest, Athletic Heather, Navy Blue, Charcoal

<b>Screened</b>	<b>24</b>	<b>144+</b>	<b>Embroidered</b>	<b>12</b>	<b>24+</b>
	<b>\$40.25</b>	<b>\$39.25</b>		<b>\$43.25</b>	<b>\$41.15</b>

Pricing through 6XLT.



## 1000 | Heavyweight Hoodie

Help your clients stay warm and look stylish at the same time with this heavyweight hoodie! Features include rib knit side gussets, cuffs and bottom band. Security/MP3 player pocket inside the pouch pocket with an eyelet hole for a headphone cord. Hoodie features a YKK 3-inch placket zipper for easy on / off. Fabric is luxurious sueded 70% cotton and 30% polyester 11 oz./ yrd 2-3 end fleece. Remind everyone that you've got them covered with this hoodie!

**Sizes:** XXS-6XL, LT-6XLT

**Colors:** Dark Maroon, Forest, Gold, Navy, Maroon, Chocolate, Royal, Purple, White, Sawdust, Black, Red, Charcoal, Athletic Heather, Kelly Green, Safety Green

<b>Screened</b>	<b>24</b>	<b>144+</b>	<b>Embroidered</b>	<b>12</b>	<b>24+</b>
	<b>\$51.00</b>	<b>\$48.00</b>		<b>\$53.75</b>	<b>\$49.50</b>

Pricing through 6XLT.



## TT96 | Team 365 HydroSport™ Pullover Hooded Sweatshirt

Your brand can promote its sense of style during the next campaign with this adult pullover hooded sweatshirt. Hooded sweatshirt is made of 11 oz.yd2 / 373 GSM, 70% cotton, 30% polyester crossweave fleece. Safety Yellow sweatshirt is 50% cotton, 50% polyester. Is water-repellent with three-piece self-lined hood. Features dyed-to-match flat braided drawcord at hood, front pouch with media pocket, matching knit trim at cuff and hem, locker loop main label, team fit and easy care. On or off the field, at any event, outfit your staff with your brand on display.

**Sizes:** XS-6XL

**Colors:** Safety Yellow, Black, Athletic Heather, Dark Grey Heather, Sport Dark Brown, Sport Dark Navy, Sport Red, Sport Royal, Sport Dark Maroon, Sport Dark Green

<b>Screened</b>	<b>24</b>	<b>144+</b>	<b>Embroidered</b>	<b>12</b>	<b>24+</b>
	<b>\$29.50</b>	<b>\$28.50</b>		<b>\$32.50</b>	<b>\$30.25</b>

Pricing through XL. Add \$3.35 each for 2XL, \$5.00 for 3XL, \$6.75 for 4XL, \$ 8.35 for 5XL, \$10.00 for 6XL.



Embroidered: Pricing includes up to 5,000 stitches on left chest, 3 1/2" x 4". For each additional 1,000 stitches add \$0.45 each.  
Digitizing: \$50.00 up to 10,000 stitches. Screened: Pricing includes one color on full front or back, 11" x 13".  
For each additional color add \$0.60 each. Set-Up Charge: \$20.00 per color. For second location, add \$1.85 each.





### Under Armour Qualifier Quarter-Zip 1343104 | Men's 1343103 | Ladies'

Your clients and staff will be in great promotional company when you handout these retail known hybrid corporate quarter-zip pullovers. The body is 100% polyester; panels, 84% polyester/16% elastane, woven panels for added durability where you need it. UA Storm panels repel water without sacrificing breathability, material wicks sweat & dries quickly. Features secure, zip hand pockets, shaped hem for enhanced coverage, fresh take on color blocking with the tick marks on sleeves.

**Sizes:** 1343104: S-4XL. 1343103: XS-3XL

**Colors:** Colors: Black, Midnight Navy, Red, Royal, Stealth Grey

12 24+

**Special \$66.00 \$63.75**

Pricing through XL. Add \$9.00 each for 2XL through 4XL.



### Adidas Brushed Terry Heathered Quarter-Zip Pullover A284 | Men's A285 | Ladies'

Simple yet fashionable these retail recognizable name brand pullovers are great for everyday styles. Made of 5.6 oz. (US) 9.3 oz. (CA), 100% polyester, they are lightweight with tonal stitching. Features reflective gradient 3-stripes heat transfer on right forearm, contrast color zipper. Men's features contrast color heat-transfer Adidas logo on center back. Ladies' features princess side seams with thumbhole on cuffs, and metallic silver heat transfer Adidas logo on center back neck. Whether recipients are heading out for a stroll or a sporting session, your brand will be on the perfect pullover for any occasion.

**Sizes:** A284: S-4XL. A285: S-3XL

**Colors:** Black Heather/ Mid Grey, Collegiate Royal Heather/ Mid Grey, Mid Grey Heather/ Black, Navy Heather/ Mid Grey, Power Red Heather/ Black

12 24+

**Special \$58.50 \$55.25**

Pricing through XL. Add \$9.55 each for 2XL through 4XL.



### Under Armour Ultimate Team Jackets 1259102 | Men's 1300184 | Ladies'

The ultimate pairing of a retail brand name and your logo! Men's jacket made of 9.4 oz. 100 polyester while Ladies' is 9.35 oz. 100% polyester, both bonded two-layer soft shell material with a warm brushed inner layer. Signature Moisture Transport System wicks sweat and dries fast. Features rolled forward shoulder seams for unrivaled comfort, full-zip front with stand collar for extra coverage, secure zippered hand pockets. Loose fit on ladies' and athletic loose fit for men. UA logo on right chest on both.

**Sizes:** Men's: S-4XL. Ladies': XS-2XL

**Colors:** Men's: Black, Graphite, Midnight Navy, Red, Royal, White. Ladies': Black/White, Graphite/White, Midnight Navy/White

12 24+

**Special \$90.75 \$85.50**

Pricing through 2XL. Add \$12.80 for 3XL and 4XL.



### New Era® Track Jackets NEA650 | Men's LNEA650 | Ladies'

This cotton-rich jacket has a matte finish and traditional details reimagined with modern New Era attitude. Made of 6.5-ounce, 53/47 cotton/poly. Features exposed vislon locking zipper, elastic trim on sleeves, front pockets, rib knit cuffs, hem with debossed silicone New Era flag logo, elastic trim on sleeves and heat transfer label for tag-free comfort. Men's jacket includes rib knit collar. Ladies' features self-fabric cadet collar, drop shoulder logo sits at high hip.

**Sizes:** S-4XL

**Colors:** Black/Black, True Navy/White, White/Black

12 24+

**Special \$44.25 \$41.90**

Pricing through XL. Add \$1.70 each for 2XL, \$3.40 for 3XL, \$5.00 for 4XL.



# Warm and Cozy...



## BP43 | Port Authority® Flannel Sherpa Blanket

Giving out this blanket is a great way to get more people on board with your brand! A soft flannel on the front with cozy Sherpa fleece on the back, perfect for bundling up beside a fire on a chilly day. Fully hemmed with port pocket for easy embroidery. Make a strong statement about your business.  
*Imprint Area: Embroidered: 5 1/2" diameter; Leather Patch: up to 6 square inches, any shape.*

**Size:** 50" x 60"

**Colors:** Black Uneven Plaid, Black Watch, Buffalo Plaid, Window Pane

**Set-Up Charge:** \$25.00

<b>Embroidery</b>	<b>12</b>	<b>24+</b>
	<b>\$43.75</b>	<b>\$41.50</b>

<b>Leather Patch</b>	<b>48+</b>
	<b>\$44.50</b>



## CP-90 | Port Authority® Knit Caps

Heads up!! Keep heads well covered during cooler weather in these 100% acrylic knit caps that have a 3" folding cuff to showcase your logo or name. Great item for outdoor workers, student groups, sports teams, ski resorts, law enforcement, and more. Cap off any event or promotion with this knit cap. One size fits most. Two-tone caps available, call for pricing.

**Colors:** Athletic Gold, Athletic Green, Athletic Orange, Athletic Oxford, Athletic Purple, Athletic Red, Athletic Royal, Black, Brown, Maroon, Millennium Blue, Navy, Neon Blue, Neon Green, Neon Orange, Neon Pink Glo, Neon Yellow

	<b>24+</b>
<b>Special</b>	<b>\$6.45</b>

## NE1091 | New Era® Tonal Camo Stretch Mesh Cap

Show off your team spirit in this sporty tonal camo cap with stretch for an always-comfortable fit. Made of 100% polyester tonal camo front panels and bill, 100% polyester Spacer Mesh mid and back panels. A structured profile, mid closure stretch fit. Clients and staff will look stylish in this cap and your brand will be in be walking around.

**Sizes:** S/M, M/L, L/XL

**Colors:** Rainstorm Grey Camo/Graphite, Black Camo, Navy Camo, Royal Camo, Red Camo

	<b>24+</b>
<b>Special</b>	<b>\$14.25</b>



## C855 | Port Authority® Pro Camouflage Series Cap

Make your brand a friend to nature with this stylish cap! This camouflage hat is perfect for showing off your brand in nature and everywhere else. Features top brands and patterns preferred by outdoor enthusiasts everywhere. Made of 60/40 cotton/poly canvas, structured mid-profile with hook and loop closure. Customize this cap with a wildlife association or organization logo, marketing symbol, slogan or message. For endless brand recognition, make this camo cap your next promotional giveaway!

**Size:** OSFA

**Colors:** Mossy Oak New Break-Up, Realtree Hardwoods, Realtree Xtra, Realtree Max 5, Mossy Oak Break-Up Country, Kryptek Highlander, Kryptek Typhon, Realtree Edge

	<b>24+</b>
<b>Special</b>	<b>\$10.00</b>



## C112 | Port Authority® Snapback Cap

Treat your clients to impressive style by handing out this cap at your next event! This two-toned cap features breathable mesh and contrast stitching on the bill. Made of 100% cotton twill front panels and bill; solids are 65/35 polyester/cotton twill front panels and bill; heathers are 100% polyester mesh mid and back panels. Features structured mid-profile with 7-position snapback closure. Top off your advertising campaign with this stylish cap.

**Size:** OSFA

**Colors:** Black, Black/ White, Dark Green/ White, Flame Red/ White, Flame Red/ Black, Grey Steel, Grey Steel/ White, Grey Steel/ Neon Orange, Grey Steel/ Neon Pink, Grey Steel/ Neon Yellow, Heather Grey/ Black, Patriot Blue/ White, Rich Navy, Rich Navy/ White, True Khaki/ Coffee, White, Black/ Grey Steel, Black/ Gold, Flame Red, Grey Steel/ Neon Blue, Grey Steel/ Purple, Patriot Blue, Patriot Blue/ Flame Red/ White, Gusti Grey/ Black/ Grey Steel, Rich Navy/ Heather Grey/ White, Heather Grey/ Rich Navy, Heather Grey/ Patriot Blue, Heather Grey/ White, Woodland Camo/ Black, Coyote Brown, Olive Drab Green, True Navy, True Red, Woodland Brown

	<b>24+</b>
<b>Special</b>	<b>\$8.50</b>



*Embroidered: Pricing includes up to 5,000 stitches, cap front: 4 1/2" x 2". For each additional 1,000 stitches add \$0.45 each. Digitizing: \$50.00 up to 10,000 stitches.*

"CAP"ture The Attention





NEW

**452 | Spiralina Comfort Night**

Dark and bright come together to form a unique, memorable pen. The deep black rubberized soft-touch barrel contrasts boldly with the bright grip and clip accents, creating a visual delight that looks as good as it writes. The ergonomic hourglass shape ensures writing comfort. Features smooth writing ink. *Imprint Area: 1 1/2" x 1/2"*.

**Colors:** Barrel: Black. Trim: Lime Green, Orange, Purple, Red, Sky Blue, Yellow  
**Ink Color:** Black  
**Set-Up Charge:** Reg.: \$15.00; Special: \$10.00

**250**  
 Reg. \$0.75-  
**Special \$0.62**

**GHK | Bambowie Bamboo Gift Set**

Think sustainable! Clients will love to tackle school and business work with the smooth-writing power of the Bambowie writing instruments made of 100% eco-friendly bamboo wood! Features top plunger action and a handy pocket clip paired with a mechanical pencil. Packaged in a recycled Kraft paper gift box.

**Color:** Bamboo  
**Ink Colors:** Medium Ballpoint Black or Blue (must specify or default to Black); .7mm Mechanical Pencil  
**Set-Up Charge:** FREE

**25**  
 Reg. \$6.99-  
**Special \$5.99**



ECO

**FUS570 | Fusion Pen**

Make the write promotional choice for your next marketing campaign. Features a fusion of metallic color barrels and sleek styling in a contemporary design with deep grooved soft feel plastic grip and chrome metal trim. Your business will display the "write" message to keep your name in the palm of your clients' hands. *Imprint Area: 1 3/4" x 5/8"*.

**Colors:** Silver, Orange, Green, Red, Blue  
**Ink Color:** Medium Point Black  
**Set-Up Charge:** FREE

**300**  
 Reg. \$0.79-  
**Special \$0.58**

**Parker IM Writing Instruments**  
**19756XX | Ballpoint 19755XX | Rollerball**

Looking to point your customers in the "write" direction? These Parker IM lacquer writing instruments have a fine lustrous lacquer finish and are made with a highly engineered manufacturing process to ensure quality. Packaged in a stylish two-piece gift box. Customize with an imprint of your brand logo on the barrel of the ballpoint or cap of the roller ball to create a memorable gift! *Imprint Areas: Ballpoint: 1.75" x .325", Rollerball: 1.25" x .343"*.

**Colors:** Ballpoint: Gold Trim: 38 Black. Chrome Trim: 36 Black, 48 Light Blue Grey, 40 Matte Blue, 44 Dark Espresso, 50 White. Rollerball: Gold Trim: 76 Black. Chrome Trim: 75 Black, 81 Light Blue Grey, 77 Matte Blue, 79 Dark Espresso, 82 White. (Replace the XX in item number with pen color, i.e., 1975638 = Black/Gold Trim ballpoint)  
**Ink Color:** Medium Ballpoint Black  
**Set-Up Charge:** FREE

**19756XX 19755XX**  
**15 15**  
 Reg. \$31.46 \$41.76-  
**Special \$22.65 \$29.95**



BEST seller

**Blair Pens**  
**BLR100 | Translucent BLV110 | White Barrel**

Classic retractable ballpoint pens with fashion-forward styling. Includes comfortable rubber grips that match the barrel or trim color and chrome accents. Smooth writing, quality pens that you can confidently hand out with your brand on it. ColorBurst full-color imprint available; add \$0.23 each. *Imprint Area: 1 1/2" x 1/2", barrel backside.*

**Colors:** BLR100: Blue, Green, Red, Purple, Orange, Pink, Yellow, Light Green. BLV110: Blue, Green, Light Green, Orange, Purple, Red  
**Ink Colors:** BLR100: Medium Black or Blue. BLV110: Medium Black, Blue available in Blue pen  
**Set-Up Charge:** FREE

**300**  
 Reg. \$0.65-  
**Special \$0.47**

**352 | Nitrous® Pen**

Go with an ultramodern, upscale take on a tried-and-true promotional classic to show you keep up with the times. This plunger action ballpoint pen features a sleek metallic barrel with futuristic accents. Strong retraction pushes a chrome tip through wraparound trim, a deeply grooved grip and smooth black ink provide the best in writing comfort. *Imprint Area: 2" x 1/2"*.

**Colors:** Black, Blue, Red, Green, Pewter  
**Ink Color:** Black  
**Set-Up Charge:** Reg.: \$15.00; Special: \$10.00

**250**  
 Reg. \$0.84-  
**Special \$0.64**

RENTAL • Cheyenne, WY

# ECO



## Renew PET Collection

100803-001 | Zippered Pouch  
100804-001 | Zippered Tote

100805-001 | Sling Bag  
100806-001 | Computer Backpack

They will carry all their gear in eco-friendly style with the new Renew rPET collection of bags. You will feel good about these products that were designed using recycled fabric and webbing made from plastic bottles. By choosing recycled polyester, we're able to deliver the same quality products, while reducing the environmental footprint. So, you can feel good while looking good. A modern and sustainable update to popular styles using 600D rPET, 210D rPET material recycled fabric. All bags have zippered pockets and many additional features. Price includes screen print decoration. Other imprinting options and placement available. *Sizes: Pouch: 8 1/4" x 5 1/2" x 2", Tote: 11" x 15" x 5", Sling: 8 1/2" x 16" x 6", Backpack: 11 1/2" x 18" x 5". Imprint Areas: Pouch: 3" x 2", Tote: 7" x 4", Sling: 3" x 1 1/2", Backpack: 5" x 1 1/2".*

**Color:** Black  
**Set-Up Charge:** \$65.00

	100803-001 100	100804-001 50	100805-001 30	100806-001 12
Reg.	<del>\$6.92</del>	\$14.78	\$18.58	\$62.48
Special	\$4.98	\$11.98	\$14.98	\$44.98



## AG-250 | Rolling Carry-On Duffel

Your clients can avoid checked bag fees with this spacious 22" smooth rolling TSA approved carry-on duffel. Made of 600 Denier Polyester featuring a large u-zip main compartment, a zippered front pocket, and a large zippered back pocket. Includes in-line skate wheel system, telescoping handle extending 22", permanent hard bottom with riveted feet, padded handle and grab handle. Your silkscreened brand will be seen anywhere your customers go "rolling" along with this duffel. Other imprinting options and locations available, please check with your Promotional Consultant. *Size: 22" x 13" x 9". Imprint Area: 4" x 4", front pocket.*

**Colors:** Black, Gray Heather, Navy Blue Heather  
**Set-Up Charge:** \$62.50

	10	25
Reg.	\$51.95	\$50.44
Special	\$38.10	\$36.95



Ask about  
more styles  
in this  
series!

## Austin Heathered Nylon Collection

BG360 | Laptop Backpack  
BG565 | Tote  
BG705 | Messenger Bag

This heathered nylon collection will keep them organized. Show off your brand on-the-go with this stylish series. All are made of 300D nylon with PVC backing and 600D Polyester with PVC backing. All will accommodate most 15" laptops. Collection features zippered pockets and side mesh pockets. There are a lot of bells and whistles included on these bags. To clean simply wipe with damp cloth. *Sizes: Backpack: 11 1/4" x 17" x 4 1/4". Tote: 13" x 15" x 4 1/8". Messenger: 15" x 11 1/2" x 3 1/2". Imprint Areas: Backpack: 6" x 6". Tote: 10" x 8". Messenger: 6 1/2" x 5 1/2".*

**Colors:** Navy Blue, Burgundy, Dark Gray, Teal  
**Set-Up Charge:** \$55.00

	BG360 15	BG565 30	BG705 20
Reg.	\$20.99	\$12.99	\$18.99
Special	\$17.99	\$9.99	\$15.99



## FB8103 | Day Trip Lunch Bag

Make your lunch plans the high point of your day trip with this handsome cooler bag. Made of 300D heathered polyester tote sports with an insulated PEVA lining, a zippered main compartment, two front and side mesh pockets, two tone webbing accent trim, and an adjustable shoulder strap. When used solely as a beverage carrier, it will hold six cans. Size: 5 3/4" x 9 3/4" x 10 5/8". Imprint Area: 4" x 3", heat transfer.

**Colors:** Blue, Gray, Red, Lime Green, Orange, Tan

**Set-Up Charge:** \$50.00

Reg. **25** \$12.99  
Special **\$9.99**

BEST seller



BEST seller



## Thunder Totes 39B1213 | Little Thunder 39B1315 | Big Thunder

One of the favorite totes in the industry! These bags totes offer unsurpassed quality, durability, and flexibility. Features 100 GSM premium non-woven polypropylene and contains 20% post-industrial recycled content, reinforced 20" handles and plastic bottom insert. They will be toting your brand wherever they go! Sizes: Little: 12" x 13" x 8". Big: 13" x 15" x 10". Imprint Areas: Little: 4 1/2" x 8". Big: 5" x 10"

**Colors:** Black, White, Royal Blue, Hunter Green, Khaki, Red, Lime Green, Orange, Burgundy, Grape, Brite Pink, Brown, Tropical Green, Yellow, Gray, Teal Blue, Navy Blue

**Set-Up Charge:** \$50.00

	39B1213 150	39B1315 150
Reg.	<del>\$3.10</del>	<del>\$3.20</del>
Special	<b>\$1.95</b>	<b>\$2.05</b>

## CE-619 | 24-Can Bucket Cooler

This ultimate party cooler holds 24 cans plus ice and has an easy access top flap. Features a zippered, insulated main compartment that holds 24 cans plus ice, a top cooler flap with hook and loop closure with easy access to the main compartment, heavy duty side carrying handles, a front pocket and an adjustable shoulder strap and comfort pad. A great donor gift for non-profits or to reward employees, all while providing brand recognition! Size: 11" x 10" x 12 1/2". Imprint Area: 4" x 4".

**Colors:** Black, Red, Royal Blue  
**Set-Up Charge:** \$62.50

	20	50
Reg.	<del>\$30.18</del>	<del>\$29.30</del>
Special	<b>\$22.13</b>	<b>\$21.47</b>

NEW



ECO



## Igloo® REPREEVE Cooler Collection 100947-001 | Lunch Pail 100948-001 | Backpack



Pair your logo with Igloo®, a recognizable retail brand! Cooler material is woven with REPREEVE™, a unique fiber created from recycled, post-consumer plastic. Leak resistant, antimicrobial liner that's easy to clean. Built-in insulation keeps food & drinks cold. Both feature zip pockets and plenty of storage options. Lunch cooler holds up to 14 cans and backpack 36 cans. The hydration pocket on each exterior side stores reusable drinkware. Holds up to 36 cans. Sizes: Lunch Pail: 10.5" x 6.2" x 10.2", Backpack: 9.1" x 11.8" x 18.3". Imprint Area: Lunch Pail: 6" x 2.5", Backpack: 5" x 6", heat transferred imprint.

**Color:** Black  
**Set-Up Charge:** \$110.00

NEW

	100947-001 20	100948-001 12
Reg.	<del>\$37.70</del>	<del>\$59.68</del>
Special	<b>\$29.00</b>	<b>\$46.00</b>



### 186XX | Opal Mug

Here's a gem! Enhance your clients' morning with a cup of their favorite hot beverage in the stylish 12-ounce stoneware mug with glossy color out and glossy color in with silicone sleeve. Your silkscreened logo will warm their hearts. What a great way to be part of their morning with your name in hand. *Imprint Area:* 3" x 1 3/4" x 9 1/4" wrap.

**Colors:** 01 White, 88 Mink, 80 Aruba, 60 Dreamscape, 62 Navy, 94 Storm Gray. (replace the XX in item number with item color, i.e., 18688 = Mink.)

**Set-Up Charge:** \$65.00

Reg. ~~48~~ \$10.49  
**Special \$8.49**

DEEP  
Etched!



### 17300E | Duo-Tone Bistro Mug

If you want customers to wake up with your brand, then look no further than this 16-ounce mug! Set the tone with this artfully crafted from ceramic, this handy piece of drinkware is a perfect addition to any coffeehouse, restaurant, or home kitchen. Vibrant color exterior with white interior with easy grip handle. It can be customized with a deep etched imprint. Brew up new business in no time! *Imprint Area:* 2" x 1 3/4".

**Colors:** Orange, Lime, Sky Blue, Midnight Blue, Purple, Brown, Black, Red (14 ounces)

**Packaging:** Master Packing Carton: \$6.95 each, Safe Pack Protective Carton: \$7.95 each (36 per carton)

**Set-Up Charge:** FREE

Reg. ~~18~~ -  
**Special \$13.65**

Reg. ~~36~~ \$12.90  
**Special \$10.35**



### 45512 | Sydney Tumbler

Keep your customers hydrated with the Sydney Tumbler! Constructed of stainless steel, this tumbler features a 15-ounce capacity and a leak-resistant sliding lid. Fill it with your favorite beverage and you'll have brand exposure with every sip! Please contact your Promotional Consultant for other imprinting options. *Imprint Area:* 2" x 1 1/2" per side, 8 3/4" x 1 1/2" wrap.

**Colors:** Black (gunmetal), Blue, Green, Orange, Red, Silver

**Set-Up Charge:** \$50.00

Reg. ~~36~~ \$7.45  
**Special \$6.85**

### DTM-BS21 | Bistro Coffee Cup with Silicone Sleeve + Straw

Choose a reusable travel coffee cup with silk screened brand on display to heat up your next marketing campaign. This 14-ounce Bistro cup features a silicone sleeve offering a comfortable grip, multi-function lid prevents spill with thumb-slide closure. Lid also provides an easy-access storage compartment for the included reusable silicone straw. Perfect for hot or cold drinks with silicone sleeve to protect hands. Hand wash only, do not microwave, BPA Free. You'll get a grip on your promotion with this cup with silicone sleeve. *Imprint Areas:* 3" x 2" either side, 8" x 2" two sides or wrap.

**Colors:** Black, Blue, Green, Red, White

**Set-Up Charge:** \$55.00

Reg. ~~50~~ \$3.83  
**Special \$3.43**

NEW



### 8832XX | h2go cerro Bottles

Your brand will go everywhere the recipient goes and be seen by others. This 20.9-ounce double wall 18/8 stainless steel thermal bottle is vacuum insulated with threaded insulated lid. Features a carry handle with silicone matching accent, and stainless-steel rim. Hand washing recommended. Do not microwave. Your logo on this seriously tough-as-nails bottle will be a hot item during your next marketing campaign. *Imprint Area:* 2 3/4" x 3" x 8 1/4" wrap, spot color imprint.

**Colors:** 12 Constellation, 15 Meadow, 24 Linen, 60 Landfill, 84 Black, 94 Slate. (replace the XX in item number with color number, i.e., 883284 = Black)

**Set-Up Charge:** \$65.00

Reg. ~~48~~ \$18.99  
**Special \$16.99**

NEW





### 4970 | Whistler Stainless Steel Tumbler with Gift Box

Have cup, will travel! That's what clients will say when you give them this 18-ounce whistler stainless steel tumbler with gift box. Double wall vacuum tumbler with stainless steel walls providing insulation to keep drinks hot or cold for hours. This tumbler is BPA free and includes a flip closure lid. Great gift for customer appreciation, employee recognition, company meetings, corporate milestones, retirements, and anniversaries. The tumbler and box can be imprinted with your brand for maximum exposure. Customers will sip happily ever after from their sweat-resistant travel tumbler! **Imprint Area:** Tumbler: 4" x 1 1/2", 10" x 1 1/2" wrap. Gift Box: 3 1/2" x 3 1/2" left center, 5" x 3 1/2" center, 5" x 2" flap.

**Colors:** Blue, Black, Seafoam  
**Set-Up Charge:** \$75.00

**48**  
Reg. \$16.55  
**Special \$15.25**



### Viking® Nova Tumblers CDKW038 | 20-Ounce CDKW039 | 30-Ounce

Conquer your next promotion with the power of these Viking Nova tumblers! Double-wall vacuum insulated stainless steel container has a copper lining, and a screw-tight, push-activated drink through lid. The unique construction keeps liquids hot for up to 5 1/2 hour or cold for up to 24 hours. Choose from vibrant colors. **Imprint Area:** CDKW038: 2.5" x 3", 9.75" x 3" wrap. CDKW139: 3.5" x 2.5", 12.18" x 6.75" wrap. Pricing includes screen printing decoration. Other options available include laser engraving, full color digital, and personalization. Contact your Promotional Consultant for pricing.

**Colors:** CDKW038: Stainless-Steel, Maroon, Navy, Purple, Copper, White, Black, Green, Mint, Royal, Red. CDKW039: Navy, Maroon, White, Black, Stainless-Steel.  
**Set-Up Charge:** Reg.: \$60.00; Special: FREE

	<b>CDKW038</b>	<b>CDKW039</b>
	<b>24</b>	<b>24</b>
Reg.	\$12.04	\$15.79
<b>Special</b>	<b>\$8.49</b>	<b>\$11.79</b>



BEST  
seller



### KW5502 | Perka® Rover Growler

The tough and top-performing Perka® 51-ounce Rover Growler has a double wall stainless steel vacuum insulated construction that will keep drinks cold for 72 hours and hot for 30 hours. The lid has a handle for easy carrying and it doubles as a 12-ounce drinking mug. The sweat-proof powder coated bottle finish provides a non-slip grip and durable protection from bumps and scrapes. Sure to become your clients' favorite companion for hiking, camping or any outdoor excursions. A portion of all proceeds are donated to Shelter to Soldier™, a non-profit organization that rescues dogs to train as service animals for veterans in need. **Imprint Area:** 3" x 5" per side. Contact your Promotional Consultant for other decorating options.

**Color:** Black  
**Set-Up Charge:** \$62.50

**12**  
Reg. \$45.99  
**Special \$39.99**



# Tell Them Thank You!

### 7611 | Medium Curved Prisma Award

This Prisma award is a great way to reward outstanding impact! It's simple and elegant with a curved design made of jade glass for a new spin on the traditional certificate. Several sizes are available and there's plenty of room for personalization, making this perfect as recognition for great talent and hard work. Add a special message to this and give it out at the next banquet or corporate event. Size: 5" x 7". **Imprint Area:** 4 1/2" x 2 1/2" deep etched.

**Color:** Jade  
**Safe Pack Protective Carton:** \$6.95  
**Set-Up Charge:** FREE

	<b>6</b>	<b>45</b>
Reg.	-	\$25.25
<b>Special</b>	<b>\$26.25</b>	<b>\$23.25</b>

Other Sizes  
Available!







# YOUR BRAND. OUR EXPERTS.

*Outstanding Results.*  
Your one source for all things branded, for 125 years!



PROMOTIONAL  
ADVERTISING



BRANDED  
APPAREL



CALENDAR  
ADVERTISING



SIGNAGE +  
DISPLAYS



AWARDS +  
RECOGNITION

## Packaging and Kitting

From gift bags, to boxes and mailers – we have all your packaging needs. The first impression can set the tone of receiving the gift and establish an emotional connection. Make your gift more memorable with special packaging.



Let us help you get your brand in their hands with our kitting services. Create a stunning unboxing experience with custom kits. Fill our custom sized and decorated boxes with the perfect product(s), a special note, and a splash of colorful paper fill to complete the look. We can help you deliver it to their doorstep with our mailing services.



### General Information

#### Effective Dates:

September 1 – December 31, 2021.

#### Prices: Prices are subject to change.

**Call to confirm pricing.** All pricing includes a one color/one location imprint, unless otherwise noted. Free or reduced set-up charges apply to first color only.

**Dimensions:** Listed width x height (x depth), unless otherwise noted.

**Production Time:** Begins once complete order information and artwork are received. Production times vary by product; contact us for times. Time does not include any proofs or shipping transit time. Times may be extended.

**Inventory:** Items are subject to available inventory.

WWW.BANKERSADVERTISING.COM

