



THE GUIDE

HELPING YOU BRAND YOUR BUSINESS AND PROMOTIONS!

MAY 1 THRU AUGUST 31, 2025



Easy Care Oxford Dress Shirt 1077 | Men's 5077 | Women's

Easy care long sleeve oxford dress shirts offering performance and style. 60/40 cotton/polyester, 4.4 oz. featuring a button-down collar, left chest pocket, full cut with back box pleat, and a two-button adjustable cuff. Wrinkle resistant and soil release finish. Sizes: Men's: S-3XL, Tall: L-6XL; Women's: XXS-3XL. Pricing through XL. Add \$5.10 each for 2XL, \$7.65 each for 3XL & 4XL, \$12.75 each for 5XL & 6XL.



Callaway Ventilated Polo CGM451 | Men's CGW437 | Women's

Opti-Dri technology transfers moisture away from the body to keep you cool and dry. Ventilated fabric allows air to flow freely through the fabric to keep you comfortable. Rib knit collar 3-button placket on men's, 6-button placket on women's with Callaway embossed buttons. Double needle hemmed bottom with side vents. 5.3oz 100% polyester. Sizes: Men's: S-4XL; Women's: S-3XL. Pricing through XL. Add \$3.35 each for 2XL, 3XL & 4XL.



Best Seller



7048 | Jersey Knit Acrylic Cardigan

Women's stylish v-neck cardigan is made with Tuff-Pil® Plus acrylic yarns for lo-pil performance and machine washable. 100% acrylic with traditional fit, 2 lower front pockets, rib knit pocket welts cuffs and waistband. Dyed to match buttons, colorfast and durable. Sizes: XS-4XL. Pricing through XL. Add \$9.00 each for 2XL, \$13.50 each for 3XL & 4XL.



TravisMathew Coveside Collection TM1MZ339 | Men's ¼ Zip TM1D007 | Women's ½ Zip

This incredibly soft, plush knit style is built for layering and it's just what you'd expect from TravisMathew. Made of 6.5-oz., 72/28 polyester/cotton, easy wash, and wear, 4-way stretch, and wrinkle-resistant. Features zip-through collar, and reverse coil metal zipper. Sizes: Men's: S-3XL; Ladies': S-2XL. Pricing through XL. Add \$1.75 each for 2XL, \$3.00 each for 3XL.



Embroidered: Pricing includes up to 5,000 stitches on left chest 3.5" x 4". For each additional 1,000 stitches add \$0.45 each. Digitizing: \$60.00 up to 10,000 stitches.



12	MCK01236 49	144
\$50.85	\$49.15	\$47.45



12	BCK01236 49	144
\$57.65	\$55.95	\$54.25



12	LCK00197 49	144
\$50.85	\$49.15	\$47.45



12	LCK00199 49	144
\$50.85	\$49.15	\$47.45

Cutter & Buck Forge Eco Stretch Recycled Polo

MCK01236 | Men's

BCK01236 | Men's Big & Tall

LCK00197 | Women's Sleeveless

LCK00199 | Women's Short Sleeve



**ECO
FRIENDLY**

The iconic Forge family features material made from 14 recycled plastic bottles per style. Engineered with 4-way stretch, moisture-wicking, and a blend of UPF 50+ UV protection. This super soft polo collection is eco-friendly with a modern clean look. Sizes: Men's: S-3XL, Tall: LT-4XT, Big: 1XB-5XB; Women's: XS-3XL



**ECO
FRIENDLY**



12	24	72
\$47.45	\$45.80	\$44.10



WATERPROOF!



12	24	72
\$58.50	\$56.80	\$55.10

New Englander® Rain Jacket

9199 | Men's

5099 | Women's



Block out the elements with these new englander rain jackets! Jackets are wind and waterproof, lined with gray mesh for air-flow circulation, and made from 100% polyurethane that is bonded to a woven backing, providing additional fabric strength. Featuring a hood with adjustable drawstrings, reflective 3M™ accent on the front and back, a two-way front zipper, a wind flap, and heat-sealed seams to keep the wind and rain out. Sizes: XS-5XL. Pricing through XL. Add \$1.75 each for 2XL, \$3.35 each for 3XL, \$5.00 each for 4XL, \$6.70 each for 5XL.

Cutter & Buck Coastline Recycled Hooded Shirt

MCK01330 | Men's

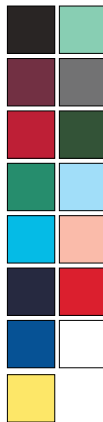
LCK00184 | Women's



Make these cozy shirts a staple in any wardrobe! This soft performance jersey fabric is lightweight, breathable, stretchy, and works as a great sun protective layer. Made from 12 recycled plastic bottles 96/4 recycled polyester/spandex, these products feature UPF 50+ protection and a hood for coverage when needed making them easy to wear and easy to wash. Sizes: Men's: S-3XL.

Embroidered: Pricing includes up to 5,000 stitches on left chest 3.5" x 4". For each additional 1,000 stitches add \$0.45 each. Digitizing: \$60.00 up to 10,000 stitches.

* Prices are subject to change.



24	144
\$12.15	\$10.65

ST420 | Sport-Tek® Posi-UV® Pro Tee

These high-performance 100% polyester tees have a soft, matte hand and deliver exceptional UV protection, PosiCharge color-locking technology, moisture wicking, and UPF rating of 50. Sizes: XS-4XL. Pricing through XL. Add \$1.75 each for 2XL, \$5.00 each for 3XL, \$6.75 for 4XL.



Best Seller

OVER 70
COLORS AVAILABLE!



24	144
\$8.05	\$6.55

PC54 | Port & Company® Core Cotton Tee

One of our most popular tees. A 5.4 oz. core cotton tee made of 100% cotton. Available in over 70 colors! Features removable tag for comfort and relabeling. Sizes: S-6XL. Pricing through XL. Add \$2.30 each for 2XL, \$4.35 each for 3XL-6XL.



COMFORT
COLORS



24	144
\$36.45	\$34.95

1566 | Comfort Colors® Crewneck Sweatshirt

This 9.5 oz. 80/20 ring spun cotton/poly sweatshirt is soft washed and garment-dyed fabric featuring 1 x 1 rib knit on collar, cuffs, and hem with a rolled forward shoulder. Sizes: S-3XL. Pricing through XL. Add \$5.45 each for 2XL, \$11.80 each for 3XL.



CUSTOMIZE
ME!



50
\$53.84

Custom Baseball Jerseys

M8604 | Men's

L8604 | Women's

Create your own look! These EVR-DRI™ high performance moisture wicking jerseys will be a team favorite. Full button closure, and open hem sleeve. Available in 100% woven RPET polyester. Full dye sublimation. Free virtual concepts. Sizes: XS-6XL. Set-Up Charge: FREE. No additional charges for larger sizes.



Screened: Pricing includes one color on full front or back up to 11" x 13". For each additional color add \$0.60 each. Set-Up Charge: \$22.00 per color. For second location, add \$2.35 each for 1st color.

25
\$9.99



NEW ITEM



ECO FRIENDLY

15058 | Replay rPET Cap

A 100% rPET, 6 panel, mid-profile with structured crown & pre-curved visor. Features perforated back panels for breathability and plastic snap tab closure. Made from post consumer recycled materials. Includes embroidery up to 7 thread colors and 7,000 stitches. Call for pricing over 7,000 stitches. 3D embroidery available, call for quote. Imprint Area: 4.5" x 2". Set-Up Charge: FREE

13
\$17.49



001
100
396
412
580
905

NEW ITEM



102527-XXX | Ahead Largo Cap

Designed for average to deep head shapes, featuring a deep crown that sits comfortably close to the ear. Made from washed twill, this unstructured cap includes a pre-curved visor and an adjustable cloth strap with a nickel snap. Included embroidery up to 10,000 stitches or one color heat transfer. 3D embroidery available, call for quote. Colors: replace the XXX in item number with color: Imprint Area: Embroidery: 4.75" x 2.25". Heat Transfer: 3.75" x 2.25". Set-Up Charge: Embroidery: Reg: \$110.00; Special: \$55.00, Heat Transfer: Reg: \$65.00; Special: \$32.50

Patch
48 144
\$13.20 \$12.30

Embroidery
24 72
\$11.20 \$9.50



C962 | Snapback Five-Panel Rope Cap

Made with 100% cotton twill, and 100% polyester rope. Partial crown structure with interior mesh and half-crown buckram that can be flipped down and away for easy decoration. High-profile 5 panels with 7-position adjustable snapback closure.

Patch
48 144
\$17.25 \$16.35



Embroidery
24 72
\$15.25 \$13.55



Best Seller

OVER 50
COLORS
AVAILABLE!

112 | Richardson Snapback Trucker Cap

The 112 is the gold standard of trucker caps, known for its superior quality, comfort, and versatility. It features a structured six-panel design, mid-profile fit, and pre-curved bill for a classic look. Premium materials, including a cotton/poly front and breathable mesh back, ensure all-day comfort with a standard cotton sweatband and an adjustable snapback closure.

Patch
48 144
\$12.70 \$11.80

Embroidery
24 72
\$10.70 \$9.00

OVER 40
COLORS
AVAILABLE!



VC300A | Valucap Dad Hat

Unstructured, six-panel, low-profile cap with pre-curved visor. Made of 100% cotton bio-washed chino twill. Self-fabric tri-glide buckle closure, antique brass with tear away label.



Embroidered: Pricing includes up to 5,000 stitches on front 4.5" x 2". For each additional 1,000 stitches add \$0.45 each.
Digitizing: \$60.00 up to 10,000 stitches.



Patches: Leatherette Patch. Pricing up to 6 square inches (any shape). One-time Set-Up - \$25.00.

Patch
48 144
\$17.00 \$16.10

Embroidery
24 72
\$15.00 \$13.30



OVER 19
COLORS
AVAILABLE!

NEW ITEM



TESS | Infinity Her Mesh Back Cap

This six-panel, low-profile cap, crafted for comfort and function. Made from 100% pigment-washed cotton twill with soft polyester mesh, it features an unstructured fit and a pre-curved visor for a relaxed, lived-in feel. Inside, a patterned under visor and matching seam tape add subtle flair, while the breathable, moisture-wicking, and makeup-resistant sweatband keeps you fresh all day. Featuring a concealed ponytail opening and adjustable plastic snapback closure.

* Prices are subject to change.

SILIPINT®
Strong by Nature®



46337
Min. 72
\$4.36



46491
Min. 36
\$14.95



Silipint® Collection

46337 | 1.5 oz. Silishot Shot Glass
46491 | 25 oz. Mason Jar Mug

This summer make it Sili. Naturally derived, endlessly versatile, vivid colors, practically unbelievable! You'll never have to worry about breaking, cracking, chipping, or scratching. The Silishot can be used as a traditional drinkware, a golf tee and even a bottle stopper. Enjoy every sip with this reusable barrel mug, designed like a classic canning jar for rustic charm and modern durability. Made from 100% food-grade silicone, it's unbreakable, scratch-resistant, and perfect for any drink, anywhere. Imprint Areas: Shot Glass: 2" x 1.5"; Mason Jar: 2" x 2". Set-Up Charge: \$55.00



Min. 250
\$3.99

NEW ITEM

BMAG1000B4CP | Best Magnet Coolie

The Best Coolie with an exciting upgrade – now equipped with a powerful magnet feature. Includes a pair of N42 rare earth magnets for exceptional strength. Perfect for tailgating, garages, lockers, kitchens, golf carts, and ATV's. Fits cans, bottles, aerosols, containers, and more. Imprint Area: 3" x 3", full-color. Set-Up Charge: Reg: \$45.00; Special: \$22.50



Min. 36
\$5.25

NEW ITEM

41041 | 16 oz. Soda Can Glass with Bamboo Lid

Create some cool promotional drinkware with this soda glass with its novelty shape. This 5.25" tall glass has a real soda can look. Features spill-resistant bamboo lid with straw making it practical and stylish for enjoying your drink. Perfect for iced coffee or cocktails and more! Imprint Area: 2.75" x 3". Set-Up Charge: \$60.00



Min. 250
\$0.88

MADE IN USA

71117 | 17 oz. Stadium Mood Cup

Changes colors with ice cold liquids ideal for events making it fun, eye catching and engaging. With 15 mood changing colors to pick from! Pricing includes 2-sided and wrap imprint assorted colors welcome at no additional cost. Features durable BPA free plastic and is top shelf dishwasher safe. Making this cup a great reusable item. Imprint Area: 3.875" x 3" per side; Wrap: 7.8" x 3". Set-Up Charge: Reg: \$55.00; Special: \$31.25

Min. 100
\$4.30

MADE IN USA

ECO FRIENDLY



TXB24D | 24 oz. Outdoorsman Tritan™ Bottle

This transparent bottle with drink through lid is a classic sports bottle with rigid wall construction for superior durability. Molded with durable, BPA-Free / FDA compliant Tritan™. Will not retain odor or flavors. Ships assembled and individually poly-bagged at no extra charge. Top rack dishwasher safe/do not microwave. Reusable replacing single-use bottles and eco-friendly. Mix & match bottle and lid colors. Imprint Area: 3.5" x 7"; Wrap: 7.5" x 7" (with 1.125" gap). Set-Up Charge: \$55.00



Min. 25
\$42.69



NEW ITEM

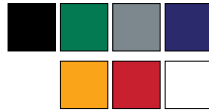
FDRK0003-LE | Pour Caddy 20 oz. Flask Set

The ultimate on-the-go drinking companion, perfect for outdoor adventures or casual gatherings. This flask features double-walled, vacuum-insulated stainless steel to keep beverages cold for up to 12 hours. It includes a flip-top liquor pour spout, leak-proof cap, and a removable base with four hidden shot cups. Also doubles as a cocktail shaker, making it ideal for tailgates, barbecues, and outdoor events. Imprint Area: Lasered: 2.75" x 3". Set-Up Charge: Reg: \$50.00; Special: \$45.00



1602-14 | 16 oz. Drake Eco-Friendly Vacuum Tumbler

Tumbler features double-wall construction, condensation-resistant exterior, push-on 100% recycled polypropylene lid with twist opening closure, and easy-to-clean wide opening. The liner is made from 91% post-consumer recycled 18/8 stainless steel with vacuum insulation. Imprint Area: 3.67" x 3.5"; Wrap: 8.34" x 3.5" Set-Up Charge: Reg: \$55.00; Special: FREE



Min. 48
\$9.98

NEW ITEM

ECO FRIENDLY



Min. 54
\$19.99



KB-51 | 24 oz. Chug & Sip Double-Wall Stainless Bottle

Whether you like to chug your beverage or sip it through a straw, this fun, multicolored bottle has you covered. Features double-wall insulation, 18/8 stainless steel, vacuum-insulated, flip-up straw lid with cover, and button-push covered wide mouth opening. Top handle also acts as secure button lock. Powder-coated finish. Imprint Area: 2.75" x 4". Set-Up Charge: \$40.00

24900 | 40 oz. Quencher Collection

This tumbler is crafted from post-consumer recycled plastic, blending sustainability with practicality. Its single-walled design ensures lightweight convenience, while the twist on/off lid with a flip-up straw provides easy sipping on the go. The ergonomic swiveling handle ensures effortless portability, making it perfect for long commutes, workouts, or busy days. Imprint Area: 3" x 3". Set-Up Charge: \$60.00



NEW ITEM



ECO FRIENDLY

Min. 36
\$8.45

NEW ITEM

Min. 48
\$8.99

9525XX | 33 oz. Billie Bottle

Stay hydrated with the Billie bottle, crafted from durable single wall 18/8 stainless steel. Designed for convenience, it features a matching threaded lid, a built-in carrying handle, and a sleek powder-coated finish for a stylish and secure grip. Perfect for daily hydration, travel, or outdoor adventures. Colors: Replace XX in item number with item color. Imprint Area: 3.5" x 4.25", Wrap: 10.25" x 4.25". Set-Up Charge: Reg: \$65.00; Special: FREE



71
73
75
79
82
72
78
44

Min. 12
\$30.80



URBANPACK / Urban Pack Backpack

This extra-large, lightweight backpack is made from durable 600D polyester with a breathable mesh back panel. It features a padded laptop sleeve for up to 17" devices, a hook and loop main closure, a zippered front pocket, and two mesh side pockets. Reflective strips add safety for commuting or outdoor use. Size: 17" x 20.5" x 6.25" Imprint Area: 7.5" x 6". Set-Up Charge: \$50.00

ECO
FRIENDLY



Min. 40
\$16.04

ULG | City Pack Zippered Cooler Bag

This 2.6 gal. 600D rPET zippered cooler bag combines functionality and style. Designed with an insulated main compartment and PEVA lining. Features zippered front pocket, waterproof zippers, and an adjustable shoulder strap for comfort. Size: 10.63" x 8.66" x 7.09". Imprint Area: 4.5" x 4.5", heat transfer. Set-up Charge: FREE

Urban Peak® Waterproof Cryo Collection

- CB186 | 12 Can Cooler
- CB187 | 24 Can Cooler
- CB188 | 26 Can Backpack

ECO
FRIENDLY



NEW
ITEM

Durable top-loading waterproof coolers featuring 100% recycled polyester and extra thick foam insulation, made from waterproof 100% RPET 600D Polyester/TPU, 10mm PE foam, and 0.38mm Tarpaulin. Features leak-resistant heat-sealed liner and seams. Coolers have adjustable shoulder straps. Features water resistant zippers, glove friendly zipper pulls, front zippered pocket, and side daisy chains. Bottler opener on 12 and 24 can coolers. Includes TruColor imprint. Sizes: CB186: 10" x 10" x 8"; CB187: 13" x 10" x 9"; CB188: 15" x 20" x 9". Imprint Areas: CB186: 3.5" x 3"; CB187: 5" x 3"; CB188: 3.25" x 4". Set-Up Charge: \$60.00

CB186
Min. 12
\$34.99



Min. 6
\$69.99

TBC048 | Voyager Duffel

This duffel bag is a fusion of functionality and eco-friendly fashion crafted from 13 recycled 500 ml PET bottles. The material is water and stain repellent with reflective details for personal safety. Features dual-function design, featuring a built-in garment bag for versatile use. Its foldable design allows for flat storage and features an integrated trolley strap. Size: 20.5" x 11.44" x 11". Imprint Area: 1.3125" x .8437". Set-Up Charge: Reg: \$50.00; Special: FREE

Min. 150
\$4.80



39AC1315 | Therm-O-Tote™

Therm-O Tote™ keeps items hot or cold. The insulated tote features durable 238 combined GSM premium non-woven exterior, thermal foil interior, dual-reinforced 1.25" x 20" long handles, and plastic bottom insert. Size: 13" x 15" x 10". Imprint Area: 5" x 10". Set-Up Charge: Screen: \$55.00



Best
Seller

CB188
Min. 4
\$67.99

CB187
Min. 6
\$49.99





102389-920 | Out of the Woods® MicroTote

Never be caught off guard without a shopping bag! Tiny but mighty accessory that houses a spacious reusable tote. Lightweight, compact design is perfect for carrying essentials while shopping. Micro tote is made from washable paper and interior tote is rPET nylon. Micro tote is equipped with key chain to attach to other bags for convenience. Out of the Woods® donates 1% of revenue to organizations that support the planet. Sizes: Micro Tote: 5.3" x 4.3" x 1.4" Interior Tote: 16.5" x 17.3". Imprint Area: 1" x 1" full-color. Set-Up Charge: Reg: \$110.00 Special: \$55.00



Min. 15
\$14.98



ECO FRIENDLY

Min. 20
\$12.52

TTR-133 | rPET Dopp Kit

Perfect way to bring all the necessities when staying overnight. Features a zippered front pocket with two interior mesh pockets, a large middle compartment with three interior mesh pockets, a zippered back compartment with ventilation panel and three elastic loops to keep toiletries in place, and a side carrying handle. Made from recycled polyester. Size: 9.5" x 4.75" x 6". Imprint Area: 3.5" x 2.5". Set-Up Charge: \$62.50



NEW ITEM

Min. 100
\$10.01



16155 | Translucent Color Daypack

This trendy bag will make you stand out from the crowd. Its convertible straps change the look from a backpack to a sling, and an interior mesh pocket provides for better organization. Made with PVC-Polyester material. Size: 11.75" x 8.25" x 3.75". Imprint Area: 5.5" x 4". Set-Up Charge: \$55.00

Soho Collection

- 97036 | Charlton Crossbody Bag
- 97035 | Elizabeth Small Backpack
- 97034 | Sullivan Large Backpack



This stylish, water-resistant neoprene collection offers versatile, lightweight designs. The crossbody bag features a spacious open compartment and zippered back pocket. The small backpack is perfect for quick trips, with three interior pockets for essentials. The large backpack fits a 16" laptop and includes a roomy main compartment, luggage sleeve, and protective passport pocket. Includes full-color imprint. Sizes: 97036: 7" x 2.25" x 5"; 97035: 8.703" x 4" x 12.609"; 97034: 14.75" x 25" x 23.5". Imprint Areas: 97036 & 97035: 1.875" x 1.125"; 97036: 3.75" x 1.75". Set-Up Charge: FREE

THE NEW SOHO COLLECTION

NEW ITEM

97035
Min. 5
\$52.00

97034
Min. 5
\$75.00



97036
Min. 5
\$26.50



CTEK063 | Water-Resistant Speaker with Carabiner
 This water-resistant speaker with a carabiner is IPX4 rated and has a 3W output for playing Bluetooth music. Size: 2.75" x 2.75" x 1". Imprint Area: 1.5" x 1.5", full-color. Set-Up Charge: \$55.00

Min. 50
\$13.24

8221 | Ravi Recycled Frame Sunglasses
 These sunglasses are crafted from rABS, a material derived from recycled ABS plastic. The UV400 lenses ensure complete protection from harmful UVA and UVB rays, offering 100% UV protection to safeguard your eyes. Experience style, durability, and environmental responsibility in every pair. Imprint Area: 2" x .25". Set-Up Charge: Reg: \$40.00; Special: FREE

Min. 100
\$2.99

ECO FRIENDLY NEW ITEM

JK-9239 | Confetti Filled Beach Ball
 Make a colorful splash at all kinds of outdoor events with the confetti style beach ball! This awesome inflatable beach accessory blows up to 16". The see through design shows off the loose red, white, and blue confetti fill that moves and turns when you toss or catch it. Imprint Area: 5" x 3". Set-Up Charge: \$59.00

Min. 100
\$1.49

AMERICAN US-TECH we got it done

CPSIA CERTIFIED

T872 | BreezeCool Rechargeable Mist Fan
 A perfect companion for staying cool and refreshed anywhere. With a powerful 2.5W output and a 500mAh battery, this compact fan delivers a refreshing breeze and soothing mist. Recharge easily via USB-C with a 5V/1A input. Ideal for travel, outdoor activities, or home use. Imprint Area: 1.75" x .75". Set-Up Charge: \$60.00

Min. 100
\$6.99

TSS-TC | Tropical SPF-30 Sunscreen
 Clip this 1.5 oz. bottle to a belt loop, golf bag, purse or keychain for on the go protection. Tropical SPF 30 Broad Spectrum Sunscreen formula is made with sunflower oil, grape seed oil, aloe juice, and tocopherol (similar to Vitamin E). Protecting against UVA and UVB rays and is FDA-compliant. Imprint Area: 1.07" x 2.16", full-color label. Set-Up Charge: Reg: \$56.25; Special: FREE

Min. 250
\$2.78

MADE IN USA

LC2876 | Lounge Chair Cover
 Upgrade any pool side experience with this soft velvety lounge chair cover. Keep the towel in place by sliding top pocket over chair back. Keep your name visible around the pool, beach, or hotel by showcasing your brand with up to a 4-color imprint or embroidered up to 8,000 stitches included in pricing. Size: 28" x 76". Imprint Areas: Screen: 6" x 16", top center. Embroidery: 7" x 10" bottom center. Set-Up Charge: Reg: \$50.00; Special: FREE

Min. 25
\$28.33

NEW ITEM

* Prices are subject to change.



Min. 300
\$3.11

CL1525 | Gourmet Fruit Medley

Choose this delightful blend of dried raisins, cranberries, mango, papaya, pineapple, banana, and cherries whenever you want to give a sweet, healthy treat. Rich in vitamins, minerals, and antioxidants, it may very well be the perfect snack! Imprint Area: 2" round, full-color label. Set-Up Charge: \$50.00

NEW ITEM



Min. 100
\$3.95

ADDITIONAL
SIZES
AVAILABLE!

ECO FRIENDLY

LTWB8510 | Creek Lightweight Washable Paper Tote Bag

This popular, washable, reusable, and eco-friendly tote is crafted from 250 GSM light-weight natural kraft paper. Tote has crisp fold lines, elegant kraft colored stitching and natural color 12" webbed handles. Get the look and feel of leather with paper! Dry Flat! Size: 8" x 10" x 5". Imprint Area: 6" x 6". Set-Up Charge: \$60.00

24 COLOR
OPTIONS
AVAILABLE!



Min. 12
\$110.00

7610 | 7' Market Umbrella with Tilt

This umbrella stands 94" tall with a 86" arc and has a wood look steel frame along with canopy! The 38mm 2-piece pole, and a 3-position zinc tilt allows the steel market umbrella to tilt and turn providing cooling shade in any direction. The 200 gm2 UV-treated polyester canopy, made with eco-friendly rPET, features a wind vent to protect you from the elements and maximize airflow. Imprint Areas: 19" x 12.75" panel, 19" x 5" valance. Set-Up Charge: \$125.00

ECO FRIENDLY



Min. 1
\$221.00

Min. 1
\$305.00



TRENDING NOW!

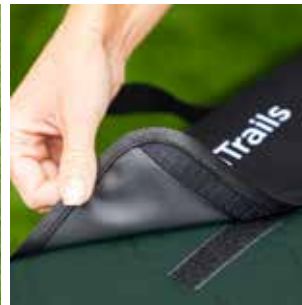
CUBD01101 | Cube Shape Display

This 20" square display made of 240g stretch polyester fabric and aluminum tube frame. Full-color, full coverage dye sublimation imprint on five sides with free carry bag and free PMS color matches. No tools needed to set up and take down. Display on the floor, table, or stack them up! Imprint Areas: 20" x 20". Set-Up Charge: FREE

FFB01522 | 12' 2-Sided Convex Shape Feather Flag Kit

Full-color dye sublimation printing allows for custom designs and PMS color matching. Printed with premium UV inks that limit fading and fabric is machine washable. PVC-reinforced tips prevent the pole tip from puncturing the pole sleeve. Includes premium carbon fiber pole, ground stake, and carry bag. Lifetime warranty on hardware. Features a block out liner allowing a different imprint on each side. Imprint Areas: 28" x 118". Set-Up Charge: FREE

* Prices are subject to change.



Screened
Min. 12
\$15.57

Embroidered
Min. 12
\$21.65

DP2316 | Fold Up Outdoor Blanket

A generous 50" x 70", 100% polyester blanket has a water repellent exterior with a waterproof lining. Features a quilted hexagon pattern throughout. It folds up into self for easy carrying with attached back hook & loop flap. Imprint Areas: Screened: 5" x 3", full-color. Embroidery: 4.5" x 3" up to 8,000 stitches. Set-Up Charges: Screened: Reg: \$31.25; Special: FREE, Embroidered: Reg: \$68.75; Special: FREE



Min. 48
\$8.99

163XX | Blume Ceramic Planter

A 22 oz. ceramic planter featuring a sleek glossy white exterior and interior with a matching glossy colored bottom and base/lid for a modern touch. Designed for healthy plant growth, it includes a drain hole with a silicone drainage stopper to prevent overwatering. Perfect for succulents, herbs, or small plants, this elegant planter comes in a beautiful gift box. Replace the XX in item number with color selection. Size: 4.4" x 4.8" x 4.4". Imprint Area: 4" x 2.25", 12.5" wrap. Set-Up Charge: Reg: \$65.00; Special: FREE

WKA-PM25 | Pitmaster Recycled Cotton Apron

This apron is made from a medium-weight 8 oz. cotton with 20% recycled cotton for eco-friendly durability. Features dual front pockets for storage of items, back tie straps for a secure and adjustable fit with adjustable leatherette neck strap. Contrasting stitching for a stylish and modern appearance. Imprint Area: 5" x 5". Set-Up Charge: \$60.00

ECO-FRIENDLY



Min. 50
\$7.95

NEW ITEM



Min. 12
\$30.19

460 | Hori Knife

Japanese-inspired garden knife boasts a versatile stainless steel 440 blade with a sharp edge for slicing through soil and a serrated edge for cutting through roots. An integrated ruler ensures precise planting, while the wooden handle offers comfort during extended use. Multipurpose gardening tool. Keep the blade sharp with the sharpening stone. Includes a leather storage sheath with belt loop. Imprint Area: 5" x .5", lasered. Set-Up Charge: \$56.00

NEW ITEM

Min. 1
\$99.99



26321 | Foam™ 30-Can EVA Cooler

This little cooler is built for fun! Portable, lightweight, and ready for any short adventure. It's 100% EVA foam construction will keep your beverages cool and your outings hassle-free. The carrying strap is crafted from seat-belt material featuring a one-handed buckle designed for ease and convenience. This nearly indestructible cooler holds up to 30 cans and floats even when full. Imprint Area: 8" x 6.5", full-color. Set-Up Charge: Reg: \$55.00; Special: FREE



Min. 3
\$84.99

NEW
ITEM

Min. 6
\$59.99



EL230 / 15W Karaoke Wireless Speaker with 2 Mics

Enjoy endless entertainment with this portable MC speaker and two wireless microphones. Featuring vibrant LED lights that pulse to your music, it offers karaoke mode, voice effects, and an adjustable EQ for a customized sound experience. Connect effortlessly via Bluetooth® 5.4, AUX, USB, or TF card, with an operating range of up to 33 feet. With up to 10 hours of speaker playtime and a convenient rubber handle, it's perfect for parties, events, and on-the-go fun. Imprint Area: 2.25" x 4". Set-Up Charge: \$60.00



102124-001 / iLive™ Tiki & Bluetooth Speakers with LED Flame



Bring the vibes wherever you go with these compact, portable IPX4 water resistant speakers that deliver quality sound and eye-catching ambiance. Features IPX4 water resistant design, wireless pairing, 360° sound, and a realistic flickering flame effect. Multiple mounting options included: adjustable yard stakes, wall mount, hanging or tabletop. Imprint Area: 1.25" x 0.5". Set-Up Charge: Reg: \$65.00- Special: \$32.50

26278 | GCI Outdoor® Kickback Rocker™

The GCI Outdoor™ Kickback Rocker™ is built for comfort. Features a patented technology that delivers a smooth rocking action on flat, hard, or soft terrain, built slightly lower to the ground than standard camp chairs providing a relaxed feeling the moment you sit down. The bagless design makes it easy to pack up and go with the built-in carry strap. Max 250 lbs. Imprint Area: 12" x 4". Set-Up Charge: \$55.00



Min. 12
\$99.96

GR4602 / Remington Cooler Backpack Chair

This 24 can capacity cooler has an integrated folding chair. It is made of durable 600D material and features a zippered main compartment with PEVA lining, adjustable padded shoulder straps, zippered front pocket, and a water bottle pocket. Max 300 lbs. Imprint Area: 3.5" x 3". Set-Up Charge: Reg: \$62.50; Special: FREE



Min. 12
\$44.99

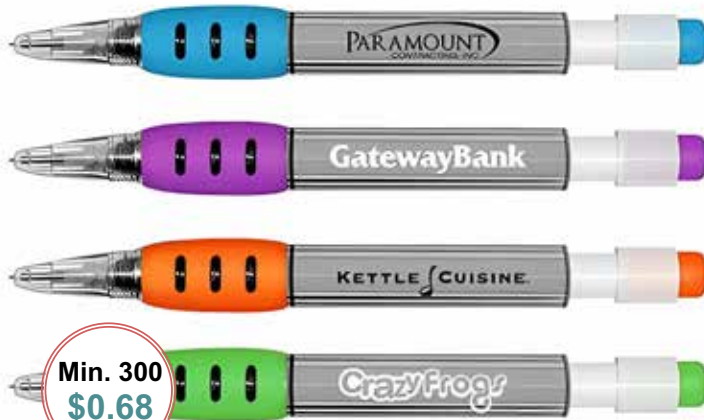
* Prices are subject to change. 13



96	144	288
\$15.89	\$12.65	\$11.81

77038PKG | Hole in One Gift Set

Reach new audiences with this Hole in One gift set as your next promotion! It features eight blank tees, a golf ball, and a white 16" x 25" towel with a grommet and hook. The clamshell packaging makes this a perfect souvenir for any golf outing. One color on towel and full-color on golf ball. Imprint Areas: Towel: 12" x 21", Golf Ball: .875" x .875". Set-Up Charge: \$55.00



Min. 300
\$0.68

8406 | Mini Mechanical Pencil

Mini cushioned rubber grip mechanical pencil with #2 HB lead and gray translucent barrel. Lead is refillable, including two 4" long .7mm lead refills inside barrel. Also great for country clubs, bowling alleys, church pews and more! Assorted colors must be ordered in increments of 50 per color. Imprint Area: 1.125" x .75". Set-Up Charge: \$60.00



Min. 25
\$27.41

61181 | Koozie® Golf Back Nine Cooler

This cooler has an insulated bag for storing drinks and multiple pockets for storing other items. Made of 190T polyester ripstop material. Perfect for a day at the course or driving range. Imprint Area: 3.25" x 3". Set-Up Charge: \$55.00



Min. 100
\$6.80



62497 | Capmate 3-in-1 Golf Hat Clip

This metal 3-in-1 tool comes with a magnetic clip that holds a lightweight ball marker and bottle opener. Attach to your hat, pocket, or shirt collar for convenient access. Imprint Area: .8125" dia., full-color. Set-Up Charge: \$55.00

Min. 200
\$1.62



100854-XXX | Sharpie® Mini

Take your Sharpie anywhere with the Sharpie Mini. The Mini offers all the qualities of a standard Sharpie Fine Point, but at 1/2 the size! Convenient cap clip comes standard and is perfect for key chains, lanyards, golf bags, etc. Permanently marks on most hard-to-mark surfaces. Replace the XXX in item number with color number. Imprint Area: .75" x 1". Set-Up Charge: FREE





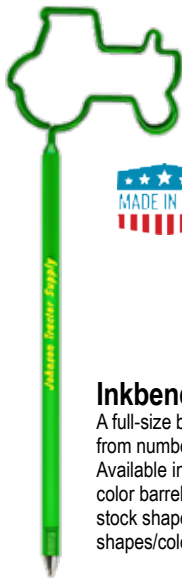
NEW ITEM



Min. 25
\$8.45

JK-5900 | Pet Play Kit in Pouch

A promotional gift for the four-legged friends in your life! Features collapsible pet bowl, dog bone shaped bag dispenser, and silicone flyer all packaged inside a drawstring pouch. Includes a one-color imprint on each item. Imprint Areas: Bowl 2.5" dia., Flyer 2.5" dia., Bag Dispenser 1" x .75". Pouch 4.5" x 5.5". Set-Up Charge: \$118.00



Min. 250
\$2.61

**AVAILABLE
IN OVER 100
SHAPES!**



Ink Bend Standard Pens

A full-size ballpoint pen bent into one of numerous stock shapes from numbers, symbols, states, animal, fruits, objects and more! Available in a variety of opaque and transparent colors with one-color barrel imprint. Includes breathe-through safety cap. Call for stock shapes. Cartridge: Black, Blue upon request. Can combine shapes/colors. Imprint Area: 3" x .625". Set-Up Charge: \$48.00

Min. 250
\$1.03



NEW ITEM



RBRDUK | 2" Rubber Duck

Made from soft, squeezable material with the familiar squeak sound. This item adds the perfect touch to your family friendly event. These will brighten anyone's day! Imprint Area: .75" x .375". Set-Up Charge: Reg: \$60.00-Special: \$30.00

NEW ITEM



Min. 48
\$8.75



70002 | Cordies Plush

These whimsical 12" plush creatures are sure to bring a smile with their floppy limbs. Soft corded material makes them huggable from head to toe. Choose a T-shirt or bandana for even more cuteness. Animals: Bear, Bunny, Elephant, Fox, Panda, Pig. CPSIA rated for ages 0+. Imprint Area: 2" x 1" shirt or bandana. Set-Up Charge: \$55.00



50	100	300
\$6.20	\$5.45	\$5.10



COLORDECK | Coloring Playing Card Deck

Every deck has a full-color logo printed on each card back paired with colorable black and white playing card faces ready for creative coloring fun on each card face. Create your own playing card faces including the king, queen, jack, and all suits! Perfect for schools, education events, doctors, dentists, hospitals, kids' clubs and more! Includes logo on card back and custom tuck box. Poker size. Imprint Area: 2.5" x 3.5". Set-Up Charge: \$37.50

250	500	1,000
\$1.50	\$1.48	\$1.46

Best Seller



25-1 | Balsa Wood Glider

Send your sales soaring with a perfectly proportioned glider designed for maximum flyability with 8" wingspan, will fly through the air with ease indoors or outside. All parts smoothly machined - no die-cut parts. Individually packaged in clear heat-sealed polybag. Imprint Area: 3.375" x 1.25". Set-Up Charge: \$85.00

* Prices are subject to change. 15



Min. 24
\$61.65

SEE MORE FEATURES HERE

LM50 / Leatherman® REV

The Leatherman® REV is a versatile, compact 4" (closed) multi-tool designed for everyday use. It features 14 tools: knife, needle nose & regular pliers, three screwdrivers, wire cutters & stripper, package opener, ruler, bottle & can opener, and wood/metal file all built with Leatherman's renowned durability and quality. Includes removable pocket clip. Imprint Area: 1.5" x .375", back of handle. Set-Up Charge: \$70.00



NEW
ITEM

Min. 25
\$25.99

GL1010 / iCOOL® Englewood Multi-Function Camping Light

This light is a versatile and durable outdoor lighting solution. It features a 5W LED light with 380-lumens for focused illumination and a 150-lumen 360° light with three modes for ambient lighting. With an IPX4 waterproof rating, a 2600mAh battery, and up to 9 hours of use, it's built for any adventure. A carabiner, tripod base, USB cable, and storage pouch add convenience. Imprint Area: 2.5" x 1". Set-Up Charge: Reg: \$62.50; Special: FREE



6022 / Cedar Creek® Backpacker Carabiner Rechargeable Lantern

This 5" LED rechargeable lantern and flashlight is perfect for outdoor use, emergencies, and more. It features six light modes, a built-in carabiner for easy carrying, and USB-C charging. Packaged in a box. Imprint Area: 1.25" x 1". Set-Up Charge: \$70.00

Min. 200
\$3.50



2098 / 6-FT Carabiner Tape Measure

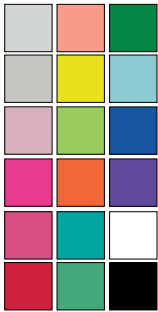
This 6-ft carabiner tape measure combines portability with durability, making it a handy tool for on-the-go measurements. It features a sturdy plastic case, a retractable metal tape with standard and metric markings, and a built-in carabiner clip for easy attachment to bags or belts. Imprint Area: 0.83" dia. Set-Up Charge: \$55.00



Min. 100
\$5.49

TL-16T / Mini Magnetic Level

The Mini Magnetic Level is a compact and practical tool designed for precision and convenience. Featuring two bubble vials (0°- 90°) and a sturdy plastic body with a strong built-in magnetic strip easily attaches to metal surfaces for hands-free use. Ruler along magnetic base marks in inches and centimeters. Imprint Area: 2" x .625". Set-Up Charge: \$40.00



250	500	1,000
\$1.16	\$1.09	\$1.03

5100 | Bag & Luggage Tag

Quickly identify your bag with this popular bag & luggage tag. Includes stock business card insert. Imprint Area: 3.25" x 1.75". Set-Up Charge: FREE



30153 | Trunk Organizer with Cooler Bag

Made of 600D polyester with 210D lining with cardboard and PE foam sides, bottom gussets. Features 3 compartments, structured sides and bottom, side slip pocket and side mesh pocket. Folds flat for travel or storage. Use as trunk organizer, shopping tote, or for storage. Imprint Area: 6" x 5". Set-Up Charge: Reg: \$50.00; Special: FREE



WB01 | Car Waste Bin & Organizer

Keep vehicles neat & tidy with this waste bin and organizer. The leak-proof lining is perfect for holding trash or debris. Lid ensures that everything stays inside. Outside pockets for organization or extra bag inserts. Black nylon canvas is long-lasting. Clips through headrest and bottom strap ensures the bin is secure or fits in center console. Size: 6" x 10" x 7". Imprint Area: 4" x 2" full-color. Set-Up Charge: Reg: \$69.00; Special: \$37.50

Min. 48
\$19.00



90XX | Novelty Metal Key Tags

Each metal key tag is crafted from electroplated metal, featuring a luxurious velvety matte finish. Every key tag includes a matching metal tag, ideal for branding and personalization. Seamlessly combines functionality with a sleek, modern aesthetic. Imprint Area: 1.125" x .375". Set-Up Charge: \$40.00

Design: Replace XX in item number with design wanted: 10 Axe, 12 Hammer, 14 Ruler, 16 Scissors, 18 Shovel, 20 Wrench.



Min. 24
\$34.37

ASC-3560 | Towel Shield Seat Cover

This practical and stylish 35"x 60" 100% cotton towel fits over car headrest with a 15" hood, shielding the entire seat from post-workout sweat, scorching temperatures or wet bathing suits. This seat cover is also a great option for mechanics and farmers, so they don't get grease or dirt on their seats. Also good for under car seats for those inevitable spills. In gray or black blends seamlessly with any interior and fits most vehicles. Easy to remove and easy to clean. Imprint Area: 12" x 15". Set-Up Charge: Reg: \$90.00; Special: \$45.00



Min. 50
\$1.28

BB449BG / Lemon Drops: Taster Packet

These old fashioned-style hard candies pack a punchy lemon flavor that lasts! 1.3 oz. taster packets are perfect for adding a pop of color to any event. Imprint Area: 1.5" x 1.5", full-color label. Set-Up Charge: FREE



Min. 50
\$25.50

99140 / Peggie - Desktop Pegboard Organizer

This stylish organizer blends seamlessly into any workspace while offering maximum functionality. With a metal pegboard featuring a cup holder, tray, and two hooks, keeping your essentials in order has never been easier. Imprint Area: 1.4" x 2.6", full-color. Set-Up Charge: Reg: \$50.00; Special: \$25.00



Min. 10
\$15.80

645759 / Desk Mate Pencil Cup and Clock

Featuring an LCD display with time, date, and temperature, plus a pencil cup and storage compartments for office supplies. Its sleek black and gray design fits any decor, while a multicolored LED light adds a modern touch. Imprint Area: 1.25" x 1". Set-Up Charge: \$65.00



California Proposition 65 Warning
WARNING: Cancer and Reproductive Harm.
www.P65Warnings.ca.gov



Min. 1000
\$0.76



5244 / Business Card Emery Board

The Business Card Emery Board is a practical, customizable promotional item. This slim, mailable design makes it a functional and a unique way to showcase your brand. Imprint Area: 3.50" x 2". Set-Up Charge: \$55.00



7939
Min. 1
\$104.00

7935
Min. 1
\$19.30

7937
Min. 1
\$56.25

7936
Min. 1
\$34.40

Cut Corner Cube Awards

7935 | 2" 7936 | 2.375" 7937 | 3.125" 7939 | 4"

Celebrate accomplishments in style. Resting on a flat edge, your company will be prominently displayed in this beautiful cube. The 3D subsurface imprint makes for an even more spectacular display. Packaged in two piece Black gift box. Imprint Areas: Vary per size. Set-Up Charge: FREE



71285 | Luminous Pro 3.0 Powerbank

This 10k mAh MagSafe power bank with a built-in Apple® Watch charging dock can charge your watch and other small electronics on the go with versatile wired and wireless options. Includes hands free kickstand. Your brand shines bright with a full illuminating LED display, all presented in premium retail packaging. Imprint Area: 1.5" x 1". Set-Up Charge: FREE



Eco-Deluxe Tech Case

TECCR Carmel TECSG Sage

Keep your tech essentials neatly stored with these compact 8.5" x 5.5" recycled leather tech cases. Designed to hold cables, batteries, USB drives, and other computer necessities, these cases ensure that everything stays in its place, whether you're on the go or organizing your desk. Imprint Area: 4.25" x 2.5". Set-Up Charge: FREE



71364 | Cork Qi Charger

The Cork Qi 3-in-1 Charger is a sustainable charging solution made from cork and packaged in FSC recycled kraft packaging. This collapsible charger features a magnetic phone stand, an Apple® Watch charger, and a wireless ear pod dock. With an included eco-friendly USB-C cable, packed in FSC recycled kraft packaging. Imprint Area: 4" x 1". Set-Up Charge: FREE



99055 | ShowTime Selfie Cell Phone Light

It's showtime! Brighten up selfies with the ShowTime Selfie Cell Phone Light. This front-facing light enhances photos, while the domed imprint area keeps your brand in the spotlight! Packaged in gift box. Imprint Area: 2.5" x 1.125", full-color. Set-Up Charge: Reg: \$50.00; Special: \$25.00

SNAPCORD | Snapcord

Simplify your charging with Snapcord, the durable 3.33-foot cable built to withstand any environment. Its innovative design features interchangeable tips, allowing you to quickly switch between lightning, USB-A, and USB-C connectors. Enjoy fast, reliable charging at home, the office, or on the go with this sleek, rugged, all-in-one accessory. Comes in second life packaging that transforms into a webcam cover. Imprint Area: 1.33" x 0.46". Set-Up Charge: FREE

SECOND CHANCE PACKAGING



**Min. 20
\$9.98**





Pare & Peel Gift Set S46 | Silver Handle G246 | Black Handle

The Pare & Peel Gift Set includes a heavy-duty paring knife and a vegetable peeler, two kitchen favorites. The set comes in a 2-piece flocked insert gift box. These tools are designed for precision and durability, with a lifetime guarantee. Imprint Area: 1.5" x .25". Set-Up Charge: Reg: \$37.50; Special: \$18.75



Min. 25
\$16.63



**ECO*
FRIENDLY**



Min. 100
\$2.60

Mi1029 | Scrubby™ Scrub Brush

Versatile and durable, this cleaning tool is perfect for scrubbing dishes, pots, and pans in the kitchen or keeping golf balls and clubs spotless on the course. It's FDA-compliant and top-rack dishwasher safe for easy cleaning. Imprint Area: 1.38" dia. Set-Up Charge: \$60.00



2537 | Cap Shaped Bottle Opener

This compact and durable bottle opener fits perfectly in the palm of your hand, making it easy to use anywhere. Designed for versatility, it effortlessly opens both twist-off and pop-top bottles. The built-in magnetic back allows for convenient storage on refrigerators or metal surfaces. Imprint Area: 2.50" dia., full-color. Set-Up Charge: \$55.00

Min. 200
\$3.10



HW132C | Itsy Bitsy Storage Container

This container keeps 5 tablespoons of sauces, dips, and small essentials fresh and organized. Perfect for the kitchen, home, or office. It securely holds dressings, snacks, jewelry, or coins. With a 2.5 oz capacity, its versatile design ensures everything stays neat and accessible. It's FDA-compliant hand wash recommended. Size: 2.5" x 1.125". Imprint Area: 1.25" dia. Set-Up Charge: Reg: \$60.00; Special: \$30.00



Min. 250
\$1.35

F1436 | Expand-It Sponge

This reusable and biodegradable sponge is made from compressed cellulose, expanding when water is added while retaining its flexibility for effective cleaning. Designed for sustainability, it's dishwasher and washing machine safe, making it easy to maintain. The ink used is FDA compliant, ensuring safety for everyday use. Imprint Area: 4" x 2.5". Set-Up Charge: \$60.00



**ECO*
FRIENDLY**

Min. 250
\$2.10

NEW ITEM



Min. 75
\$6.18

ECO FRIENDLY

SM-7960 | 3-Piece Resistance Band Set

The set includes three 12" by 2" loop resistance bands that are color coded and clearly marked for different stretch levels. The rPET carrying pouch makes them great for travel or staying organized. Imprint Area: 2.5" x 3". Set-Up Charge: Reg: \$55.00; Special: FREE



Min. 100
\$1.30

AHTFOS34 | 3/4" Dye-Sublimated Fold Over Elastic Band

This .75" wide stretch elastic band is a great accessory to your everyday wardrobe. The ends are securely tied, making it perfect for use as a stylish wristband or a convenient hair tie. Put your brand front and center with these dye-sublimated fold-over elastic hair ties. Imprint Area: 8.5" x 0.5". Set-Up Charge: Reg: \$45.00; Special: FREE

Stress Busters

A plush and gel sensory experience created to soothe, relax, and entertain. Available in over 25 shapes! From sports to fruits to animals and more! Irresistibly super-soft plush cover on the outside. Logo printed on white loop for a retail finish. Contact us for options. Imprint Area: 1.5" X 0.5". Set-Up Charge: \$60.00

OVER 25 SHAPES AVAILABLE!



Min. 100
\$4.20

SR06GB | Pro Golf Ball Massager

This handy tool relieves muscle tension and promotes relaxation. The 2" dimpled golf ball shape sets it apart from other massage tools and stress relief products, adding an element of fun and distinctiveness. Compact size makes it easily portable - doubles as a desk accessory. Imprint Area: .875" dia. Set-Up Charge: Reg: \$60.00; Special: \$30.00



Min. 250
\$1.72

SLB-LS | Lip Sips SPF 15 Broad Spectrum Lip Balm

Drink-inspired lip balm flavors, formulated with natural beeswax, organic hemp seed oil, rosemary extract and SPF 15 broad spectrum protection. Flavors: Orange Soda, Grape Soda, Summer Sangria, Raspberry Lime Margarita, Strawberry Limoncello, Key Lime Pie Milkshake. Imprint Area: 1.8" x 1", full-color. Set-Up Charge: Reg: \$56.25; Special: FREE



Min. 250
\$1.10

Min. 100
\$6.78

NEW ITEM



H797 | AM/PM Weekly Push Button Pill Tray

A week's supply of pills is held in seven compartments, each with a snap-tight lid. Boxes can be removed from the tray for easy traveling. Imprint Area: 8.5" x 1". Set-Up Charge: \$60.00





Post-it® Transparent Notes & Flag Sets OPTNF | 5-Flag Set OPTNA | Arrow Flags

A clear note you can see through, that sticks securely and removes cleanly. Organizer pack features full-color imprint on front & back covers and 35 sheet blank 3" x 3" transparent note pad and flag set. Choice of standard or arrow flags. Imprint Area: 2.376" x 5.25". Set-Up Charge: FREE

250	500
\$5.99	\$5.65



Min. 100
\$4.27



ECO-FRIENDLY

FREE SHIPPING!

NZG | Terra Recycled Milk Carton Notebook

A notebook offering a unique cover made from 31% recycled milk cartons, giving it a distinctive, textured look with dots due to the recycled material. It includes 80 sheets (160 pages) of smooth, 70gsm ivory paper sourced via responsible forestry. Bound in a classic book style, the notebook features a matching elastic strap closure and a coordinating satin ribbon bookmark. Size: 5.83" x 8.27". Imprint Area: 3" x 2.5". Set-Up Charge: FREE



892 | Pen & Pencil Caddy

Pen & Pencil Caddy that features your ad in full-color with full coverage all around, top to bottom. Sturdy 14pt coated 2 side stock easily pops open and locks in place and folds flat for easy distribution. Vibrant eye-catching advertising will stand out on any desk or counter. Lightweight and easily mailed with FREE mailing envelopes included. Get prime ad space on your client's desk! Imprint Area: Call for template. Set-Up Charge: FREE



250	500	1000
\$2.82	\$2.17	\$1.85



Min. 20
\$18.22

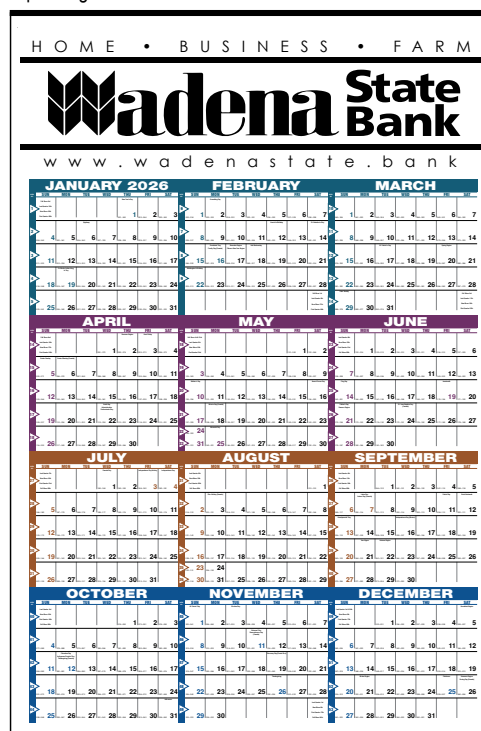


PZ-428 | Madison Zippered Padfolio

Padfolio features secure zippered closure, stylish contrasting stitching, interior section featuring gusseted file pocket that easily fits a full-size tablet, two additional interior pockets. Includes wide body penholder, 8.5" x 11" writing pad with matching privacy cover. Imprint Area: 5" x 6". Set-Up Charge: \$62.50

3093 | Production Planner Year-In-View® Calendar

A Year-In-View® calendar with a full-color contemporary design, made of 100 lb. matte hanger paper stock, and tinned at the top and bottom. Perfect way for your customer and prospects to plan their year with all the days "in view". Size: 25" x 38". Imprint Area: 24" x 6.25" (in Black). Set-Up Charge: FREE



100	200	300	500
\$6.14	\$4.71	\$4.18	\$3.74



Min. 250
\$0.64



NEW ITEM

230 | Shadow Pen

A sleek, retail-inspired fine point pen with an ombre barrel, chrome trim, and smooth black gel ink for a refined writing experience. Cartridge: Black. Imprint Area: 1.5" x .5". Set-Up Charge: Reg: \$15.00; Special: FREE

Min. 250
\$0.50



Best Seller

328 | Javalina™ Breeze Pen

Bright sorbet colors and crisp white trim make a cool statement. Guaranteed ultra-smooth writing. Cartridges: Black or Blue, specify. Imprint Area: 1.5" x .75". Set-Up Charge: Reg: \$15.00; Special: FREE

FREE SHIPPING!



Min. 250
\$0.96

ECO FRIENDLY

AKJ / Echo Recycled Plastic Sensory Pen

Designed for comfort and calm, this pen made of RABS plastic features a soft-touch grip and a sensory sticker affixed to the clip to help ease stress and anxiety. Plunger crafted from bamboo. Parker refill containing documental ink. Cartridge: Black. Imprint Area: 2.283" x .276", Set-Up Charge: FREE

Min. 100
\$1.46



NEW ITEM

PAT2510 | Patriot Pen

An executive metal retractable pen with matte metallic finishes and mirror chrome trim. Plunger action with medium point cartridge. Cartridge: Black. Imprint Areas: 2.125" x .25" or LaserScribe 360: 2.125" x .875", add \$.50 each. Set-Up Charge: FREE

Min. 300
\$0.68



DSC250 | Discovery Pen

Designed with a larger diameter barrel, this pen offers plenty of room for larger advertising messages. Smooth Rite refill. Cartridge: Black, Blue available in Blue trim. Imprint Areas: Screened: 1.875" x .75" or Colorburst Digital: 2" x .31", add \$.25 each. Set-Up Charge: FREE

Screened
Min. 250
\$3.49

Full-Color
Min. 250
\$3.59



NEW ITEM

ECO FRIENDLY

BY208 | Pentel Floatune Retractable Rollerball

New rollerball water-based ink is infused with an oil-based lubricant that provides the smoothest skip-free writing and ink that dries so fast even left-handers love it. Made with 56% post-consumer recycled materials. Cartridge: Black or Blue .8 mm medium point. Imprint Area: 2" x .3". Set-Up Charge: FREE

Plant after use and make it sprout

ECO FRIENDLY



NEW ITEM

Min. 250
\$1.50

56083 | SproutWorld™ FSC® Pencil

Write your story with purpose using this plantable pencil! Crafted from FSC-certified wood, it features a biodegradable cellulose capsule at the end that's filled with seeds ready to sprout after the pencil is too short to use. Seed choices: Basil, Carnation, Cucumber, Daisy, Forget-Me-Not. Optional instructional cards, call for pricing. Imprint Area: 2.25" x .75". Set-Up Charge: FREE

Min. 240
\$1.99



NEW ITEM

BV7160 | Puzzle Ballpoint Pen

Combines playfulness and functionality with its unique puzzle-inspired design. Featuring a 9-square puzzle grid, this plastic pen offers an interactive experience that provides a fidget outlet. Cartridge: Black. Imprint Area: 1.0625" x 1.0625", screened or ColorSplash, add \$.45 each. Set-Up Charges: Screened: Reg: \$62.50; Special: FREE; ColorSplash: \$62.50

Min. 250
\$0.85



NEW ITEM

SCROLL | Recycled Retractable Window Message Pen

A pen that writes and communicates, offering a unique twist with six pre-printed inspiring rotating messages. Standard 1.0mm tip delivers smooth and consistent lines. Cartridge: Black, Blue available in Blue trim. Imprint Area: 1.5" x .75". Set-Up Charge: Reg: \$15.00; Special: FREE

YOUR ONE SOURCE FOR ALL THINGS BRANDED

**EVERYTHING
PROMO FOR
YOUR BRAND!**

New Products
Eco-Friendly Ideas
USA Made Items
Retail Brands
Best Sellers
and more!



General Information

Effective Dates: May 1 - August 31, 2025.

Prices: Prices are subject to change. Call to confirm pricing. All pricing includes a one color/one location imprint, unless otherwise noted. Free or reduced set-up charges apply to first color only. **Dimensions:** Listed width x height (x depth), unless otherwise noted.

Production Time: Begins once complete order information and artwork are received. Production times vary by product; contact us for times. Time does not include any proofs or shipping transit time. Times may be extended.

Inventory: Items are subject to available inventory.

California Proposition 65 Warning:

The California Safe Drinking Water and Toxic Enforcement Act of 1986 impacts products shipped into the state of California or which are ultimately distributed in that state.

There are over 1,000 chemicals listed as harmful by the state of California. Items noted with this warning have been identified by our respective suppliers as products that may contain a significant amount of chemicals known to the state of California to cause cancer, birth defects, or reproductive harm.



www.bankersadvertising.com

