

THE



**BankersADVERTISING**  
since 1896 COMPANY

Effective May 1 - Aug. 31, 2020

# GUIDE

POINTING YOU IN THE RIGHT DIRECTION



Your guide to great deals on our new and best-selling promos!



**Tech**



**Caps**



**Office**



**Drinkware**

Your one source for all things branded!



**NYFLYER | Nylon Flyer**

Help your brand "soar" to new heights when you include this flyer in your next marketing campaign. Conveniently folds to fit in the matching storage pouch, creating an ideal giveaway. A fantastic way to promote your brand, project, or special event! Great for outdoor fun! Imprint Area: 5 1/2" dia.

**Colors:** Blue, Green, Orange, Red (all with Black trim)  
**Set-Up Charge:** Reg: \$60.00. Special: FREE

	<b>250</b>
Reg.	<del>-\$1.20</del>
<b>Special</b>	<b>\$0.95</b>



**26045 | Two-Tone Black Frame Sunglasses**

Watch your brand or message shine bright on this classic eyewear. The black frames hold UV400 protective lenses while the imprinted bow is available for communicating your services. They will be a promotional handout that your customers will treat as a trendy and stylish fashion accessory. Colors can be assorted. Four-color process available, add \$.60 each. Imprint Area: 1" x 1/4".

**Colors:** Black, Blue, Coral, Green, Orange, Pink, Purple, Red, Royal, White, Yellow  
**Set-Up Charge:** \$50.00

	<b>150</b>	<b>500</b>
Reg.	<del>-\$1.73</del>	<del>-\$1.30</del>
<b>Special</b>	<b>\$1.39</b>	<b>\$0.99</b>



**California Proposition 65 Warning**  
**WARNING:** Cancer and Reproductive Harm-  
[www.P65Warnings.ca.gov](http://www.P65Warnings.ca.gov)

**MSS-TC | Mineral SPF 30 Sunscreen Tottle Bottle**

Offer this 1.5 fl. oz. tottle of SPF-30 mineral sunscreen to grow your audience. Features a natural formula made of zinc oxide that acts as its sole active ingredient; includes high-quality organic ingredients as beeswax and coconut oil. Provides protection and scatters, absorbs, and reflects UVA and UVB rays. Water resistant for 80 minutes. The tottle includes a carabiner for ease in attaching to bags or keychains for portability. Perfect item to brand with a full-color logo on the label showing you care and want to help protect your customers. Imprint Area: 1.05" x 1.3".

**Colors:** Translucent Tottle, White Cap  
**Set-Up Charge:** Reg: \$50.00. Special: FREE

	<b>250</b>	<b>1,000</b>
Reg.	<del>-\$3.12</del>	<del>-\$2.94</del>
<b>Special</b>	<b>\$2.99</b>	<b>\$2.79</b>



**WBA-WB20 | Waterproof Gear Bag with Touch-Thru Pouch**

From sea to summit to rolling prairie rivers, this dry bag provides waterproof protection for essential gear! Made of 210T polyester, this bag has a clear, full-length window with internal Touch-Thru phone pocket. Roll down top of bag and buckle ends together for waterproof seals. Includes carabiner clip. Your brand will be known for protection at your next promotion. Size: 10" x 13 1/2". Imprint Area: 4 1/2" x 5" (back only).

**Colors:** Black, Blue, Lime Green, Red, Sky Blue  
**Set-Up Charge:** \$55.00

	<b>100</b>	<b>500</b>
Reg.	<del>-\$4.97</del>	<del>-\$4.72</del>
<b>Special</b>	<b>\$4.75</b>	<b>\$4.50</b>



**86150 | Full Color Beach Towel**

Make a splash with this full-color, edge-to-edge printed beach towel! This towel will showcase your brand with an unlimited number of imprint colors. Take advantage of the entire towel area for your message. Features soft poly front with absorbent cotton back. Imprint Area: 30" x 60".

**Color:** White  
**Set-Up Charge:** Reg: \$50.00. Special: FREE

	<b>18</b>	<b>36</b>	<b>72</b>
Reg.	N/A	<del>\$18.47</del>	<del>\$17.92</del>
<b>Special</b>	<b>\$19.62</b>	<b>\$17.92</b>	<b>\$17.59</b>



White Label  
\*Bottles Not Included

Pad-Print

**3898 | 5 Liter Bevy Beverage Bucket**

Chill and serve your favorite beverages in this classic vessel. The galvanized iron gives it a rustic appeal; it has a five-liter capacity and includes two side bottle openers. Put your brand in full color on a white label or screen your logo directly on the bucket. Imprint Area: Label: 7" x 5"; Silkscreen: 5" x 5".

**Color:** Silver  
**Set-Up Charge:** Label: Reg: \$45.00. Special: \$22.50;  
Pad-Print: Reg: \$40.00. Special: \$20.00

	<b>48</b>	<b>288</b>
Reg.	\$13.98	\$10.57
<b>Special</b>	<b>\$10.99</b>	<b>\$7.99</b>



**15572 | Non-Woven Stadium Cushion**

Cheer on your favorite team in comfort. This affordable stadium cushion allows you to show your team spirit while enjoying the game! It also includes a front pocket for personal items and a handle to transport. Features contrast binding. Size: 13" x 13" x 1/2". Imprint Area (front pocket): 8" x 7".

**Colors:** Black, Red, Royal  
**Set-Up Charge:** \$50.00

	<b>150</b>	<b>500</b>
Reg.	\$2.39	\$2.14
<b>Special</b>	<b>\$2.17</b>	<b>\$1.97</b>



\*Cup Not Included

**705 | Inflatable Beverage Float**

Host a toast no matter where you are when you advertise your business on this Inflatable Beverage Float! Measuring 10", it holds standard size cups, cans or bottles while also boosting brand recognition with a clever imprint. Great summer fun handout. Imprint Area: 3" x 2".

**Colors:** Blue, Red, White, Yellow  
**Set-Up Charge:** Reg: \$40.00. Special: \$20.00

	<b>100</b>	<b>500</b>
Reg.	<del>\$2.20</del>	<del>\$1.66</del>
<b>Special</b>	<b>\$1.75</b>	<b>\$1.25</b>



**26195 | Buffalo Check Wander Cushion/Blanket**

Just zip up, throw over your shoulder, and slip your keys or cell phone in the front pouch.

Once folded, this blanket turns into a comfy seat cushion. With the water-resistant backing, this unique designed blanket is perfect for your next outdoor adventure. Made of 160 GSM polyester fleece. Imprint Area: 5 1/2" x 5".

**Colors:** Black, Blue, Lime, Red  
**Set-Up Charge:** \$50.00

	<b>24</b>
Reg.	\$20.55
<b>Special</b>	<b>\$16.75</b>





**Kitchen Utensils**  
**W950 | Basting Spoon**    **W952 | Slotted Turner**  
**W955 | Meat Chopper**    **W957 | Skimmer**

Add savory touches to your homemade meals with these kitchen tools! These non-scratch nylon and stainless steel utensils will not harm delicate surfaces and have ergonomic comfort-grip handles.

Heat-resistant and come with a lifetime guarantee. The six blades of the Meat Chopper are perfect for chopping and stirring ground meats while cooking. The Basting Spoon is ideal for both cooking and serving meals. The Skimmer is designed for removing and draining food from hot water, soup, or oil. And the Slotted Turner is designed to allow juices to escape through the slots. Imprint Area (etched on handle): 1 1/2" x 3/8".

**Color:** Black  
**Set-Up Charge:** \$37.50

Reg.	25 -\$6.76	100 -\$6.24	250 -\$5.51
<b>Special</b>	<b>\$6.29</b>	<b>\$5.45</b>	<b>\$4.90</b>



**Suction-Base Silicone Dishes**  
**259 | Bowl**  
**258 | Plate**

Don't drop your dishes! The suction base on these plates and bowls adheres firmly to surfaces for mess-free meals and snacks. Easy to clean and dishwasher safe. BPA free and FDA compliant durable silicone. Black or white FDA compliant ink available for decoration. Suitable for all ages. Imprint Area: *Plate:* 2 1/2" x 1 1/2"; *Bowl:* 1 1/4" x 1 1/4" (inside) or 2" x 3/4" (exterior).

**Colors:** Blue, Green, Pink, Yellow  
**Set-Up Charge:** \$40.00

Reg.	259 -\$7.39	258 -\$10.97
<b>Special</b>	<b>\$6.72</b>	<b>\$10.06</b>



**1310 | Bottle Brush**

Trying to reach those hard-to-reach places? This brush and its long polypropylene handle provide plenty of reach for both tall and short bottles. Soft TPR bristles prevent scratches, allowing you to use it on both steel and glass bottles. Designed to fit narrow and wide bottle neck sizes. Dishwasher safe, FDA compliant, and BPA free. Imprint Area: 1 1/2" x 3/4"

**Colors:** Grey, Lime, Process Blue  
**Set-Up Charge:** \$55.00

Reg.	150 \$4.38	500 \$4.18
<b>Special</b>	<b>\$4.25</b>	<b>\$3.95</b>



**HW66SS | Jarby Silicone Slim Jar Spatula**

This is the perfect tool for getting inside tall bottles or jars of salad dressings, ketchup, or mustard. Also works great for mixer beaters.

The spatula has a silicone head and an acrylic handle, is heat resistant up to 446°F, and has a convenient hanging hole. FDA approved. Imprint Area: 1 1/4" x 1/4".

**Colors:** Marble, Royal Blue  
**Set-Up Charge:** \$55.00

Reg.	150 \$1.86
<b>Special</b>	<b>\$1.58</b>



**4900-03 | Bone Appetit Dual Pet Food Carrier with Bowl**

Make traveling with your pet a breeze with the Dual Sided Pet Food Container. The specialized locking lid has two openings, one for each side of the container. Simply put your pet food on one side with water on the other, and you are ready to go for the day! One collapsible silicone bowl is included. FDA compliant and BPA Free. Imprint Area: 1 1/2" x 1 1/2".

**Color:** Black  
**Set-Up Charge:** \$55.00

Reg.	36 \$15.10	150 \$13.90
<b>Special</b>	<b>\$13.98</b>	<b>\$11.98</b>





### BLUEBLOCKERS | Blue Light Blocking Glasses

With the high use of digital devices, blue light blocking glasses are gaining in popularity. Overexposure to blue light can lead to eye strain. These trendy, classic glasses will help protect your customers' and employees' eyes from excessive levels of blue light. A practical giveaway that is made from lightweight material, they are comfortable to wear all day long. CPSIA tested. Imprint Area: 2" x 7/16" (on bow).

**Colors:** Black, Clear  
**Set-Up Charge:** \$50.00

**California Proposition 65 Warning**  
**WARNING:** Cancer and Reproductive Harm.  
[www.P65Warnings.ca.gov](http://www.P65Warnings.ca.gov)

	<b>150</b>	<b>600</b>
Reg.	<del>\$4.25</del>	<del>\$3.50</del>
<b>Special</b>	<b>\$3.65</b>	<b>\$2.60</b>



### Post-it® Notes

- PD33P-25 | 2 3/4" x 3" - 25 Sheets
- PD34P-50 | 3" x 4" - 50 sheets
- PD46P-25 | 4" x 6" - 25 sheets



Genuine Post-it® notes stick securely, remove cleanly, and make a lasting impression. Create endless promotional possibilities—they get your brand seen sheet after sheet, day after day. Full-color printing with process ink on your choice of three different sizes. Go with a note you know and trust. Look for the Post-it® logo on the back. Imprint Areas: PD33P-25: 2 3/8" x 2 1/2"; PD34P-50: 2 1/2" x 3 5/8"; PD46P-25: 3 5/8" x 5 7/16".

**Color:** White  
**Set-Up Charge:** FREE

	<b>PD33P-25</b>	<b>PD34P-50</b>	<b>PD46P-25</b>
	<b>500</b>	<b>500</b>	<b>500</b>
Reg.	<del>\$0.62</del>	<del>\$0.97</del>	<del>\$1.05</del>
<b>Special</b>	<b>\$0.35</b>	<b>\$0.67</b>	<b>\$0.67</b>



### OFFICE SURVIVAL KIT



### DESKBOX | Desk In A Box

Boxed into an old marketing campaign? Your brand can go anywhere with this mini desk in a box! Compact organizer box includes travel size paper clips, rubber bands, transparent tape, self-adhering notes, self-adhering flags, and stapler with staples. This kit will easily fit into briefcases, purses, and glove compartments. Great for any age group. Imprint Area: 2 1/2" x 1 1/2".

**Colors:** Clear, Translucent Blue, Translucent Green, Translucent Red  
**Set-Up Charge:** Reg: \$60.00. Special: FREE

	<b>100</b>	<b>400</b>
Reg.	<del>\$3.48</del>	<del>\$3.16</del>
<b>Special</b>	<b>\$3.19</b>	<b>\$2.87</b>



### WOF-BH20 | Brume Mini Humidifier

Clear the air with your clients when you give out this mini humidifier with your message on it during your next promotion. Features a 6 3/4 oz. water reservoir and two attachable USB light and fan accessories. Operates for up to 8 hours and has a color-changing light feature throughout. Includes charging cable. Keep your customer's office or room fresh with this handy item. Imprint Area: 3 1/2" x 1 1/4".

**Color:** White  
**Set-Up Charge:** \$55.00

	<b>40</b>
Reg.	<del>\$11.40</del>
<b>Special</b>	<b>\$10.58</b>



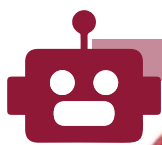
### 410800 | Wooden Cube Grow Kit

The wooden cube grow kit displays beautifully on an office desk or windowsill. Features highly visible branding directly on the cube; packaged in a full-color presentation sleeve. With strong staying power, this is sure to leave a positive impression year-round. Kit contains seed packet, waterproof protective liner, and soil pod. Add water and sunshine to start growing sustainability, growth, or any feel-good message. Give something that gives back. Imprint Area: 2" x 2".

**Seed Options:** Basil, Chives, Cilantro, Cosmos, Cucumber, Dill, Early Boy Tomato, Forget-Me-Not, Jalepeño Pepper, Marigold, Mint, Money Plant, Oregano, Parsley, Sunflower, Wheatgrass, Zinnia  
**Set-Up Charge:** \$56.00

	<b>125</b>	<b>250</b>	<b>500</b>
<b>Special</b>	<b>\$5.25</b>	<b>\$4.92</b>	<b>\$4.50</b>





### 266 | Privacy Guy Webcam Cover

Help keep digital intruders away from your clients and their surroundings when you advertise on this Privacy Guy Webcam Cover! Recipients simply place the product over their webcam to provide privacy as well as protection for their camera lens. Clips onto most laptops, tablets, or smartphones, providing lots of marketing opportunities. Imprint Area: 5/8" x 7/16".

**Colors:** Black, Blue, Green, Orange, Pink, Purple, Red

**Set-Up Charge:** Reg: \$40.00. Special: \$20.00

	<b>250</b>	<b>1,000</b>
Reg.	<del>\$1.31</del>	<del>\$0.99</del>
<b>Special</b>	<b>\$1.05</b>	<b>\$0.75</b>



### IT160 | Light-Up-Your-Logo XL Charging Cable

Always wanted to see your name in lights? Well your company's name can be! Keep your customers connected with this 39" long charging cable featuring light inside both cable and end panels. Includes USB to USB Type C and duo 5 Pin lightning/Micro USB. Input: 5V/1A; Output: 5V/1A. End panel illuminates your logo when in use! Imprint Area: 3/4" x 3/8".

**Color:** White  
**Set-Up Charge:** \$55.00

	<b>50</b>	<b>300</b>
Reg.	<del>\$7.75</del>	<del>\$7.29</del>
<b>Special</b>	<b>\$7.39</b>	<b>\$6.99</b>



### WTE-EW20 | Easy-Wear Earbud/Glasses Holder

A great advertising and functional product. The silicone strap has magnetic clips on each end to keep your wireless earbuds secure—or attach your glasses so they can hang around your neck when not in use. Comes with a clear plastic round case with a split ring keychain. Clients will appreciate you and your brand as they keep track of glasses and earbuds. Imprint Area: 1 3/4" dia.

**Colors:** Black, Blue, Lime Green, Red, White  
**Set-Up Charge:** \$55.00

	<b>250</b>
Reg.	<del>\$1.28</del>
<b>Special</b>	<b>\$1.08</b>



**California Proposition 65 Warning**  
**WARNING:** Cancer and Reproductive Harm.  
[www.P65Warnings.ca.gov](http://www.P65Warnings.ca.gov)

### EARDOTS | Ear Dots Totally Wireless Earbuds

With these earbuds, clients will never worry about wire tangles—and they'll have your brand to thank! These earbuds provide great sound quality and the ergonomic design provides a comfortable fit. They are easy to pair, and with 5 hours of continuous playtime, they are a must have for any traveler. Ear Dots come with a small case that also doubles as a charging station. They are very convenient to use, as you can control music and answer calls on the earbuds directly, allowing for hands-free use. The working range is about 30 feet from phone, allowing you to move freely around a home, gym, or workplace. Imprint Area: 2" x 3/4".

**Color:** Black  
**Set-Up Charge:** \$50.00

	<b>10</b>	<b>40</b>
Reg.	<del>\$49.99</del>	<del>\$39.99</del>
<b>Special</b>	<b>\$42.99</b>	<b>\$31.99</b>



### 21018 | ProBuff™ Gift Set

This gifts set is doing double duty to keep your customers safe! The professional-quality ProBuff™ cleaning cloth measures 7" x 5 1/2" and features a dual-layer design with a plush side and a silky side, ideal for camera lenses, glasses, screens, and more. Supporting the antimicrobial properties built into the cloth is a sprayer that can be filled with your customers' cleaner of choice. Add your logo to both items for increased brand exposure on this handy, full-color cleaning aid. Sprayer and cloth come packaged together in a clear plastic tube, with an optional fireglaze button on the cap for an additional \$0.40 each. Imprint Areas: *Cloth:* 7" x 5 1/2" (include 1/4" bleed); *Sprayer:* 3" x 2" (include " bleed); *Button:* 1 " dia. (include " bleed).

**Colors:** *Cloth:* White w/ Grey back and Black stitching; *Tube caps:* Black, Blue, Grey, Red  
**Set-Up Charge:** Reg: \$50.00. Special: FREE

	<b>100</b>
Reg.	<del>\$4.93</del>
<b>Special</b>	<b>\$4.29</b>

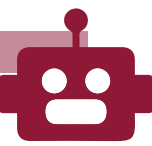
### USB DRIVES

Increase awareness about your products or services with promotional USB drives. Preload flash drives with sales and marketing collateral, catalogs, price lists, information, videos, and more. These are great leave-behinds after presentations, meetings, and conferences. We can even preload the data for you.

Bankers Advertising offers a wide assortment of shapes and memory sizes to fit your needs.

**Contact your Promotional Consultant about our selection and pricing!**





### QiMOUSEPADLARGE | Large Qi Mouse Pad

A mouse pad and Qi charger in one, this product is designed to become a permanent desk fixture, replacing everyday wall chargers and mundane mouse pads for good with your logo in full view. This Qi-compatible mouse pad will enable a cursor to move decisively AND charge Qi-enabled smartphones. In addition to being incredibly useful, this product also offers generous space for promoting your brand. Charging feature only compatible with Qi-enabled devices. Choose one-color or full color imprint. Imprint Areas: Centered left: 6" x 6"; Upper or Lower Right: 3 1/10" x 2 1/5".

**Colors:** Black, Grey  
**Set-Up Charge:** 1-Color: \$41.67; Full color: \$91.67 (plus \$0.83 each run charge)

**50**  
Reg. \$20.82  
**Special \$18.32**



### SM-2921 | Boost Bluetooth® Speaker & Charging Pad

The Boost Bluetooth® Speaker and Wireless Charging Pad is a must have for any desktop with your brand on it! When the Boost Bluetooth® speaker is plugged in with the provided 19" 2-amp micro USB cable, the top part of the speaker functions as a wireless charging pad—it can charge any device capable of charging wirelessly. The speaker functions off Bluetooth® and needs to be plugged into a power source to provide unlimited playback time. Features 3-watt speaker output and 5-watt wireless charging output. Imprint area: 2 1/2" x 2 1/2".

**Colors:** Black, Royal Blue, White  
**Set-Up Charge:** \$55.00

**50**      **500**  
Reg. \$11.77      \$10.88  
**Special \$10.98**      **\$9.98**

### AAYTEE | Aaytee™ Voice-Activated Robot

Propel your brand into the future with this battery-operated robot that can react and respond to voice commands. It will dance, sing, and converse, and it can even record a voice and play it back. Your next promotion will be jammin' along with this robot when your full color imprint is on it. Imprint Area: 3" x 2 1/4".

**Color:** Grey  
**Set-Up Charge:** FREE

**10**  
Reg. \$38.33  
**Special \$33.33**

### EL157 | Solar Waterproof Bluetooth® Speaker

Flex your marketing muscles during your next promotion with this rugged indoor/outdoor 5-watt Bluetooth® speaker with solar panel. Recharge via micro USB cable or high efficiency monocrystalline solar panel. IPX6 Certified rating: waterproof, dust proof, and shock proof. Green indicator light turns on when solar charging, off when removed from sunlight. Has built-in mic for hands-free calls with an operating range of 33ft/10m with approximately 20 hours of battery life and 2 1/2 hours USB charging time/12 hours solar charging time. Connect using Bluetooth® 4.2 technology or AUX line-in cable. Includes USB/micro charging cable, 3.5 mm audio cable, strap, and manual. M8 screw hole on bottom for bike mount (bike mount not included). Imprint area: 2" x 2" (TruColor).

**Colors:** Gray, Yellow  
**Set-Up Charge:** \$55.00

**12**  
Reg. \$45.89  
**Special \$39.99**



### OCTOFORCE2.0 | Octoforce 2.0™ 8000mAh Wireless Power Bank

Whether they're plugged in or going truly wireless, the Octoforce 2.0 wireless power bank takes charging on-the-go to the next level for clients. Experience an effortless way to re-energize devices with an 8000mAh capacity premium lithium-ion battery. Features 3.2 amp wired charging speed, includes micro USB charging cord, capacity indicating lights. Compatible with latest iPhone and Android. Plus, they can charge three devices at the same time: one wirelessly, one via USB, and one via USB-C port. Imprint area: 2 1/2" x 2 1/2", full-color.

**Color:** Black  
**Set-Up Charge:** FREE

**10**  
Reg. \$46.67  
**Special \$38.33**





**Team 365 Command Snag Protection Polos**  
**TT21 | Men's**  
**TT21W | Ladies'**

Versatile 4.5 oz. polos with 100% polyester snag-protection piqué. Self-fabric collar with integrated collar stays. Features dyed-to-match buttons and side vents. Embroidered with your brand. Employees and salespeople will make a great impression on customers in these, whether providing service or sales or interacting at tradeshows. Great for the pro shop at golf courses. Imprint Area: 3 1/2" x 4" (embroidered, left chest).

**Sizes:** Men's: XS-4XL; Ladies': XS-3XL  
**Colors:** Black, Safety Yellow, Sport Athletic Gold, Sport Burnt Orange, Sport Silver, Sport Red, Sport Maroon, Sport Royal, Sport Dark Navy, Sport Forest, Sport Vegas Gold, Sport Orange, Sport Purple, Sport Light Blue, Sport Kelly, Sport Scarlet Red, Sport Dark Green, Sport Dark Maroon, Sport Dark Brown, White.

**12 24+**  
**Special \$19.25 \$16.75**  
 Pricing through XL. Add \$1.70 each for 2XL, \$3.40 for 3XL, \$5.00 4XL.



**Core 365™ Origin Performance Pique Polos**  
**88181 | Men's**  
**78181 | Ladies'**

Cut to the chase with your advertising campaign when it includes these Origin performance piqué polos! Made of 4.1 oz. easy-care 100% polyester piqué; offered in a variety of bright colors and sizes. Features matching knit collar, dyed-to-match buttons, heat-sealed label, and side vents. Men's has three-button placket; Ladies' has a four-button narrow placket. Dress to impress with your brand on these polos. Imprint Area: 3 1/2" x 4" (embroidered, left chest).

**Sizes:** Men's: XS-6XL; Ladies': XS-4XL  
**Colors:** Acid Green†, Black, Burgundy†, Campus Gold†, Campus Orange†, Campus Purple†, Carbon, Charity Pink†, Classic Navy, Classic Red, Electric Blue†, Forest†, Platinum†, Safety Yellow†, True Royal, White† (†not available in Men's 6XL or Ladies' 4XL)

**12 24+**  
**Special \$19.25 \$16.75**



**Threadfast Apparel Ultimate T-Shirt**  
**100A | Unisex**  
**200 RV | Ladies' V-Neck**

It's the ultimate screened T-shirt! This tee is 15% heavier and more substantial than most basic blends, a 4.8 oz/165 gsm 60/40 cotton/poly blend. The polyester portion is Repreve® Recycled Polyester made from recycled content including plastic bottles. Consumes less petroleum, emits fewer greenhouse gasses, and conserves water and energy compared to virgin fiber. Heather colors are 30% eco-dyed Colorzen® cotton, which uses 90% less water, 75% less energy, and 95% fewer chemicals. Along with the sustainability benefits, this shirt offers a side-seamed retail fit with tear-away label. An excellent choice for any giveaway. Imprint Area: 11" x 13" (screened; full front).

**Sizes:** Unisex: XS-4XL; Ladies': S-2XL  
**Colors:** Army Heather†, Black, Bright Orange\*, Bright Yellow\*, Charcoal Heather†, Forest Green\*, Graphite, Green Hex Camo†, Heather Grey, Hot Pink\*\*, Maroon Heather†, Navy, Navy Heather†, Pacific Blue, Palm Paradise†, Red, Red Heather†, RFID Black\*\*†, RFID Heather Grey\*†, RFID White\*†, Royal\*, Royal Heather†, Silver, Tropical Jungle†, White (†not available in 4XL; \*Unisex only; \*\*Ladies' only)

**100A 200RV**  
**24 144 24 144**  
**Special \$7.15 \$6.30 \$6.95 \$6.10**  
 Pricing through XL. 100A: Add \$1.20 each for 2XL, \$2.35 for 3XL, \$3.50 for 4XL; 200RV: Add \$0.85 each for 2XL.



**Core 365 Fusion ChromaSoft™ T-Shirts**  
**CE111 | Men's**  
**CE111W | Ladies'**

Made from 4.5 oz. 100% polyester jersey knit fabric with ChromaSoft™ technology. Combines the color fastness of cationic dyes with soft cotton-feel performance. Moisture-wicking and antimicrobial performance. Ladies' features a scooped neck. Features tear-away main label, easy care, and active fit. Whether at a sports event, tradeshow, or as everyday wear for employees, this shirt will highlight your brand as a walking display. Imprint Area: Embroidered: 3 1/2" x 4" (left chest); Screened: 11" x 13" (full front).

**Sizes:** Men's: XS-6XL; Ladies': XS-4XL  
**Colors:** Acid Green, Black, Burgundy, Campus Gold, Campus Orange, Campus Purple, Carbon, Charity Pink, Classic Navy, Classic Red, Electric Blue, Forest, Platinum, Safety Yellow, True Royal, White

**Screened Embroidered**  
**24-143 144+ 24+**  
**Special \$8.50 \$7.70 \$10.25**



**Embroidered:** Pricing includes up to 5,000 stitches. For each additional 1,000 stitches add \$0.45 each. Digitizing: \$50.00 up to 10,000 stitches.

**Screened:** Pricing includes one color. For each additional color add \$0.35 each. Set Up Charge: \$20.00.





**Adidas® Performance Sport Shirts**  
**A230 | Men's**  
**A231 | Ladies'**



Offering a casual-yet-classy style, these short sleeve polos are bound to impress! Made of 3.8 oz., 100% polyester these lightweight polos have a three-button placket and a hydrophilic finish with UPF 30 protection. Men's features ribbed knit collar and contrast-color heat-transfer logo on right sleeve. Ladies' features self-fabric collar and silver heat-transfer logo on bodice. Imprint Area: 3 1/2" x 4" (embroidered, left chest).

**Sizes:** Men's: XS-4XL; Ladies': S-3XL

**Colors:** Black, Collegiate Gold, Collegiate Green, Collegiate Purple, Collegiate Red, Collegiate Royal, Green, Grey Three, Maroon, Navy, Orange, White

**12 24+**  
**Special \$35.75 \$33.35**

Pricing through XL. Add \$1.30 each for 2XL, \$4.20 each for 3XL & 4XL.

**JST66 | Sport-Tek®**  
**Packable Anorak**

Be fully prepared for sudden gusts and gales with this protective pullover. Made with a 100% polyester shell, three-panel hood with drawcord and toggles, and extended reverse coil center front zipper for easy on/off. Features elastic at cuffs, front pouch pocket, and drawcord hem with toggles. Packs into front zippered pocket! With your brand embroidered and on display, you'll make it easy to help clients remember who is keeping them warm on crisp windy days. Imprint Area: 3 1/2" x 4" (embroidered, left chest).

**Sizes:** XS-4XL

**Colors:** Black, Forest Green, Graphite Grey, Maroon, Purple, True Navy, True Red, True Royal, White

**12 24+**  
**Special \$27.40 \$25.00**

Pricing through XL. Add \$1.75 for 2XL, \$5.00 for 3XL, and \$6.75 4XL.



**Under Armour Tech**  
**Polos**  
**1283703 | Men's**  
**1309537 | Ladies'**

Classy-looking polos made of 5.4 oz. 100% polyester; signature Moisture Transport System wicks away sweat and dries fast. Includes anti-odor technology, which prevents the growth of odor-causing microbes. Features self-fabric collar, hemmed sleeves, and contrast color piping on shoulder and sleeve. Men's has three-button placket, performance loose fit, and UA logo on right chest and back neck. Ladies' has one-button placket, loose fit, and UA logo on right chest. Imprint Area: 3 1/2" x 4" (embroidered, left chest).

**Sizes:** Men's: S-4XL; Ladies': XS-2XL

**Colors:** Black/Graphite\*, Black/White\*\*, Graphite/Black\*, Graphite/White\*\*, Mid Navy/Royal\*, Mid Navy/White\*\*, Pink Edge/White, Red/Black\*, Red/White\*\*, Royal/Navy\*, Royal/White\*\*, White/Graphite (\* Men's only; \*\* Ladies' only).

**12 24+**  
**Special \$46.00 \$43.50**  
Pricing through 2XL. Add \$6.00 each for 3XL & 4XL.



**Sport-Tek® Tricot**  
**Track Jackets**  
**JST94 | Men's**  
**LST94 | Ladies'**

Show everyone why they should come to you first for the best products when you hand out these track jackets with your brand proudly embroidered. Made of 100% polyester tricot, with 100% polyester rib knit cuffs and hem and soft-brushed backing. Features reverse coil zipper, cadet collar, pieced stripe on shoulders and sleeves, and front pockets. Great jacket for a team, to wear when the sun goes down at events, or for a casual day outdoors. Imprint Area: 3 1/2" x 4" (embroidered, left chest).

**Sizes:** XS-4XL

**Colors:** Black/Black, Black/White, Graphite Grey/Black, True Navy/White, True Royal/White

**12 24+**  
**Special \$34.15 \$31.70**  
Pricing through XL. Add \$1.75 for 2XL, \$5.00 for 3XL, and \$6.75 4XL.



Embroidered: Pricing includes up to 5,000 stitches. For each additional 1,000 stitches add \$0.45 each. Digitizing: \$50.00 up to 10,000 stitches.



### C801 | Port Authority® Snapback Fine Twill Cap

Treat clients to an impressive style by handing out these walking billboards! This snapback cap is made of 65/35 poly/cotton twill. Structured cap with mid profile and closure with 7-position adjustable snap. A cap the recipient will be proud to wear. Customize with your logo—great for businesses, colleges, sports teams, or organizations—or with promotional slogans. Top off your advertising campaign with this twill cap! Imprint Area: 4 ½" x 2".

**Colors:** Black, Graphite Grey, Khaki, Navy, Red, Royal

**24+**  
**Special \$7.50**



### C302 | Port Authority® Flexfit® Melange Mesh Back Trucker Cap

Hit the road in style during your next marketing campaign with this mesh-back trucker cap. Made of 92/8 poly/PU spandex jersey front panels with 95/5 poly/PU spandex mesh mid and back panels (Grey Heather) or 95/5 poly/PU spandex jersey front panels with 95/5 poly/PU spandex mesh and mid back panels (Dark Charcoal Heather). Structured cap with mid profile and stretch fit. Great giveaway for sports events, fundraisers, tradeshow, community centers, college campuses, and more. Your brand will be everywhere! Imprint Area: 4 ½" x 2".

**Colors:** Black/Dark Charcoal Heather, True Navy/Grey Heather, True Red/Grey Heather, True Royal/Grey Heather

**24+**  
**Special \$12.50**



### NE205 | New Era® Snapback Trucker Cap

Structure your next promotional campaign around this 5-panel cap with mesh mid and back panels for superior ventilation and a trend-right snapback closure for an easily adjustable fit. Made of 100% cotton twill front panels and bill and 100% polyester mid and back panels. Structured cap features high profile crown, pre-curved bill, and adjustable 7-position snap-tab closure. Arrange for your brand to be seen on this popular cap. Imprint Area: 4 ½" x 2".

**Colors:** Black/Black, Black/Scarlet, Black/White, Camo/Black, Chocolate/Khaki, Deep Navy/Deep Navy, Deep Navy/White, Graphite/Black, Grey/Grey, Kelly/White, Royal/White

**24+**  
**Special \$13.25**



### A600 | Adidas® Core Performance Max Cap

Your clients will look good and stay cool no matter what their game, with your brand on display! This fashionable Adidas® Core Performance Max cap is made of durable, wear-resistant, and moisture-wicking 100% polyester. Structured and mid-profile, with six-panels and pre-curved visor. Offers UV protection of 50+ UPF, a must-have that perfectly protects heads from the blazing sunshine. Hook-and-loop closure with Adidas® logo embroidered on left side panel. Imprint Area: 4 ½" x 2".

**Colors:** Black, Navy, Red, Royal Blue, Vista Grey, White

**24+**  
**Special \$20.95**

*Embroidered: Pricing includes up to 5,000 stitches. For each additional 1,000 stitches add \$0.45 each. Digitizing: \$50.00 up to 10,000 stitches.*



**The Edge Cooler**  
**9291 | Black 9292 | Royal Blue 9293 | Red**

Wherever their day takes them, this cooler will help keep your clients refreshed throughout. Features front zippered pocket and large side pocket for water bottle or other easy to reach items. Includes adjustable shoulder strap and top grab handle, heat sealed, PEVA lining, and PU fabric backing (non-PVC). Cooler has an 8-can capacity. Gain your clients' appreciation when you give them this cooler with your brand on it. Size: 10 1/2" x 7 1/2" x 6 1/4". Imprint Area: 4 1/2" x 3".

**Colors:** Black, Royal Blue, Red  
**Set-Up Charge:** Reg: \$65.00.  
 Special: FREE

**50**  
 Reg. \$13.88  
**Special \$9.99**



**3700 | Crosshatch Non-Woven Cooler Bag**

You'll boost your brand when you give out this cooler bag to customers during your next promotion. When they want to take along a tasty meal they've prepared to the park for a picnic or to work for lunch, this bag will keep it fresh thanks to water-resistant coating and foil-laminated foam insulation. The long, 19 1/2" carrying handles make it easy to take just about anywhere. Size: 14" x 11" x 6". Imprint Area: 8" x 4".

**Colors:** Black, Gray, Lime Green, Red, Royal Blue  
**Set-Up Charge:** Reg: \$50.00.  
 Special: \$25.00

**100** **500**  
 Reg. \$4.35- \$3.29-  
**Special \$3.49 \$2.49**



**CT-555 | 12-Can Malibu Cooler Tote**

This compact cooler tote is made with upscale diamond weave fabric accents and hardware to keep you looking stylish with a retail look. Made of 600D polyester; features an insulated, zippered main compartment that holds 12 cans plus ice, a front pocket with hook and loop closure, and a 10" drop handle height. You'll keep your "cool" with this marketing tool. Size: 17" x 12" x 4". Imprint Area: 6" x 4".

**Colors:** Black, Grey Heather, Navy Heather  
**Set-Up Charge:** \$62.50

**25**  
 Reg. \$18.45  
**Special \$13.52**



**Koozie® Rogue Coolers**  
**16126 | 12-Pack**  
**16127 | Backpack**

Your clients will grab these coolers and go have some fun with your brand prominently showing. Both are made of 600D polyester. The 12-pack is just the right size and the tarpaulin bottom makes it easy to wipe clean. Features zippered main compartment and front zippered pocket with padded adjustable/removeable shoulder strap and carry handles. The backpack makes it easy to keep all your drinks and snacks cool while on the go. Backpack also has a tarpaulin bottom and padded adjustable shoulder straps with leatherette lash tab and reflective piping. Both have heat-sealed PEVA liners. Keep items cool with ice packs. Imprint Areas: *12-Pack: 3 1/2" x 3"; Backpack: 3" x 4".*

**Colors:** Grey, Red, Royal  
**Set-Up Charge:** \$50.00

**16126** **16127**  
**48** **48**  
 Reg. \$19.93 \$25.24  
**Special \$15.79 \$19.99**



**100427-038 | Igloo® Seadrift™ Hard Lined Cooler**

Pack a lot of punch in your next promotion with this name brand, hard-lined cooler made with a unique material and ultra-functional features—with your logo on it! Features include a 24-can capacity; MaxCold® insulation with 25% more foam to keep drinks and food cooler longer; and a leak-resistant, antimicrobial liner that's easy to clean. Equipped with a dual zippered opening to the large main compartment, a top hatch for easy access, a removable hard plastic liner, front zippered pocket, EPPE heat-sealed lining, and an adjustable padded shoulder strap. PVC and phthalate free. Size: 14" x 10 1/2" x 9". Imprint Area: 6" x 3 1/2".

**Color:** White/Grey  
**Set-Up Charge:** Reg: \$65.00. Special: FREE

**6** **25**  
 Reg. \$90.26 \$77.41  
**Special \$79.99 \$59.99**



### 39SV218 | Giant Saver Tote

If budget is the top priority for your next promotion, turn to this affordable giant saver budget tote for an effective printed bag that will save you a penny or two. This multi-use, economical, 90 GSM, non-woven tote featuring heat-sealed handles is available in multiple colors. Made of 20% recycled post-industrial polypropylene, this tote is reusable and 100% recyclable. Buying bulk items? This traveling billboard will have your silkscreened brand going everywhere. Size: 21" x 17" x 8 1/2". Imprint Area: 14" x 10".

**Colors:** Black, Grass Green, Royal Blue, White  
**Set-Up Charge:** \$50.00

	<b>150</b>	<b>500</b>
Reg.	<del>\$2.35</del>	<del>\$1.75</del>
<b>Special</b>	<b>\$1.95</b>	<b>\$1.45</b>



### 100302-023 | Vertex® Equinox Cinchpack

Your brand will get carried away on this handy, cinch-style pack which opens to a large main compartment. Zippered security pocket on rear of bag to protect credit cards, cash, and other valuables. Security pocket is lined with scratch-resistant material to keep cell phone and tech accessories safe. Made of 600D Dobby Polyester and 420D Diamond Dobby Polyester. Premium rope shoulder straps for comfortable carrying, top grab handle, and dual side mesh water bottle pockets. Reflective Vertex® logo for extra visibility at night. Size: 11" x 17" x 5". Imprint Area: 5" x 8".

**Color:** Gunmetal Grey  
**Set-Up Charge:** Reg: \$65.00  
 Special: FREE

	<b>25</b>	<b>100</b>
Reg.	<del>\$20.81</del>	<del>\$18.35</del>
<b>Special</b>	<b>\$17.99</b>	<b>\$14.99</b>



### Paws N Claws Collection A449 | Sport Pack A669 | Lunch Bag

Get wild in your next marketing campaign with this Paws N Claws collection. Choose from the sport pack or the lunch bag, great for zoos, aquariums, children's day camps, schools, and more. They feature exclusive, copyrighted designs that will set your brand apart. Made of 210D polyester material. Sport pack features drawstring closure and lunch bag has fold over hook and loop tape closure. These delightful gifts will have your clients chasing down your brand for services. Sizes: *Sport Pack:* 13 1/2" x 15"; *Lunch Bag:* 7" x 9" x 4". Imprint Areas: *Sport Pack:* 9" x 4"; *Lunch Bag:* 3 1/2" x 2 3/4".

**Designs:** Bass\*, Bear, Bee, Black Bear\*, Blue Jay\*, Brown Owl\*, Bulldog\*, Bunny\*, Cardinal\*, Chicken\*, Clown Fish\*, Cow, Crab\*, Dolphin, Dragon\*, Duck, Eagle\*, Elephant, Fox\*, Frog, Giraffe\*, Hedgehog\*, Horse\*, Kitten, Koala\*, Ladybug\*, Lamb\*, Lion\*, Llama\*, Mermaid\*, Monkey, Moose\*, Owl, Panda\*, Penguin, Pig, Polar Bear\*, Puppy, Raccoon\*, Sea Turtle\*, Shark, Sloth\*, Tiger, Unicorn\*, Wolf\* (\*A449 only).

**Set-Up Charge:** Reg: \$60.00. Special: FREE

	<b>A449</b>	<b>A669</b>
	<b>150</b>	<b>150</b>
Reg.	<del>\$5.02</del>	<del>\$5.21</del>
<b>Special</b>	<b>\$3.99</b>	<b>\$4.33</b>

### 8545 | Fashion Fit Tote

Your brand will be carried in style with this trendy tote. This tote's fashion forward exterior is constructed of 300D material with stretchy cotton material on the bottom. Zippered main compartment with colorful interior accent made of 210D material. Main compartment includes a mesh zippered pocket and mesh drinkware holder. Front angled zippered pocket provides extra storage for small items. Features 27 1/2" shoulder straps for ease in carrying. Size: 17 1/2" x 15" x 6 1/2". Imprint Area: 5" x 5".

**Colors:** Black, Blue  
**Set-Up Charge:** \$55.00

	<b>50</b>
Reg.	<del>\$13.99</del>
<b>Special</b>	<b>\$12.99</b>



**ASK US ABOUT MORE ITEMS IN THIS COLLECTION!**



**Slater™ Collection**  
**SLATERFANNY | Fanny Pack**  
**SLATERTOTE | Tote**

A practical and fashionable way to carry your essentials in this durable polyester fanny pack or tote. Fanny pack offers a large main pouch with 1L capacity and hidden zipper pocket for added security. Wear it around the waist or as a crossbody bag to keep valuables safe and secure. Features adjustable waist strap and two zippered pockets. Tote features side water bottle pocket, extra deep main compartment that fits up to a 15" laptop, and adjustable shoulder straps. Both with full color imprint on vegan leather patch. Sizes: *Fanny Pack*: 12" x 7 1/2" x 3"; *Tote*: 11" x 23 1/4" x 5". Imprint Areas: *Fanny Pack*: 1 3/4" x 1 1/4"; *Tote*: 2.63" x 1.69".

**Color:** Black  
**Set-Up Charge:** FREE



	SLATERFANNY 10	SLATERTOTE 10
Reg.	\$16.67	\$28.33
Special	\$13.33	\$20.00



**KAPSTON® Jaxon Series**  
**16077 | Journal**      **16130 | Tech Organizer**  
**16085 | Sling**      **15862 | Briefcase**

These retail-inspired products will add a touch of class to any marketing campaign. The briefcase is functional and stylish with main zippered compartment, interior padded laptop sleeve, and front zippered pocket. The sling will stand out from the crowd, featuring a padded tablet sleeve with same amenities as the briefcase. Tech Organizer will keep cords and gear organized while on the go. The journal features front slip pocket and leatherette pen loop, perfect to use at a meeting. With your brand on these your name will be visible to the recipients. Imprint Areas: *Journal*: 2 1/4" x 2 1/4"; *Tech Organizer*: 3 1/2" x 2 1/2"; *Sling*: 5" x 4"; *Briefcase*: 6" x 4".

**Color:** Black, Blue. (Journal available in Blue only)  
**Set-Up Charge:** \$50.00

	16077 50	16130 50	16085 50	15862 25
Reg.	\$10.21	\$13.09	\$16.73	\$24.15
Special	\$8.09	\$10.99	\$13.25	\$19.12



**Smush Packable Collection**  
**SMUSHPACK | Backpack**  
**SMUSHDUFF | Duffel**

Clients can travel light with either the duffel or backpack. On arrival, unpack the duffel and use as a gym bag or for overflow storage. Folds up into compact, lightweight zippered pouch. Unpacked, has 24L capacity. Equipped with three pockets and large interior compartment. Backpack is incredibly lightweight and breathable. Folds up into compact, lightweight zippered pouch; has breathable, adjustable straps. It will become an instant favorite for all. Imprinted full color on vegan leather patch. Sizes: *Duffel*: 18" x 10.6" x 7.9" (unpacked), 8 1/2" x 6" x 2 1/4" (packed); *Backpack*: 11" x 16.5" x 5.9" (unpacked), 6 1/2" x 5 1/2" x 2 1/2" (packed). Imprint Areas: *Duffel*: 2.63" x 1.69"; *Backpack*: 2.63" X 1.69".

**Color:** Grey  
**Set-Up Charge:** FREE

	SMUSHPACK 10	SMUSHDUFF 10
Reg.	\$23.33	\$23.33
Special	\$15.00	\$16.67



### ASN1080 | Assant Stylus Pen

The Assant is a sleek, metal, contemporary, executive stylus pen with matte metallic finish, spring-action clip, and etched ribbed grip. Color of engraving: Laser shows as frosted white on all colors. LaserScribe 360™ engraving available for more pop of your brand; add \$0.45 each. Imprint Area: *Single Pass Laser*: 2 1/8" x 1/4"; *LaserScribe 360™*: 2 1/8" x 3/4".

**Colors:** Black, Blue, Burgundy, Gunmetal  
**Ink Color:** Black  
**Set-Up Charge:** FREE

	<b>100</b>	<b>500</b>
Reg.	<del>\$1.65</del>	<del>\$1.45</del>
<b>Special</b>	<b>\$1.48</b>	<b>\$1.25</b>



### 856 | Zonita® Stylus Pen

Transition between app navigating and writing notes without missing a beat! Showcase your silver-engraved logo or company name on this useful promotional tool that features a handy stylus on one end and a twist-action ballpoint pen on the other. Offered in four high-gloss enamel colors, each metal-constructed pen features an ergonomic hourglass shape, chrome filigree band and accents, and a jumbo rubber grip for a comfortable hold. Free black oxidation on white pen. To showcase your brand even more, Revolution® engraving is available; add \$0.50 each. Imprint Area: *Standard Laser*: 1 1/4" x 1/4"; *Revolution®*: 1 1/4" x 1/2".

**Colors:** Black, Blue, Red, White  
**Ink Color:** Black  
**Set-Up Charge:** \$45.00

	<b>75</b>	<b>500</b>
Reg.	<del>\$3.08</del>	<del>\$2.91</del>
<b>Special</b>	<b>\$2.95</b>	<b>\$2.65</b>



### CEN2020 | Century Pen

Take down your competition with the click of a button on this deluxe plunger pen. Features metallic colored barrel, bright chrome trim, and comfort black rubber grips. Perfect promotional item for any marketing campaign or high traffic event, such as a trade show or convention. Customized with a brand or company name, this will be a handy souvenir that never goes out of style. LaserScribe 360™ engraving available; add \$0.45 each. Imprint Area: *Single Pass Laser*: 2 5/8" x 1/4". *LaserScribe 360™*: 2 5/8" x 7/8".

**Colors:** Black, Blue, Gun Metal, Red  
**Ink Color:** Black Medium Point  
**Set-Up Charge:** FREE

	<b>100</b>	<b>500</b>
Reg.	<del>\$1.25</del>	<del>\$1.09</del>
<b>Special</b>	<b>\$1.12</b>	<b>\$0.93</b>



### Blair Pens BLR100 | Translucent BLV110 | White Barrel

Classic retractable plastic ballpoint pens with fashion-forward styling. Features either a translucent or white barrel. Include comfortable rubber grips that match the barrel or trim color and chrome accents. Smooth writing, quality pens that you can confidently hand out with your brand on it. ColorBurst Full-color imprint available; add \$0.23 each. Imprint Area: 1 1/2" x 1/2".

**Colors:** *BLR100*: Translucent: Blue, Green, Light Green, Orange, Pink, Purple, Red, Yellow. *BLV110*: Blue, Green, Light Green, Orange, Purple, Red  
**Ink Colors:** *BLR100*: Black or Blue. *BLV110*: Black. Blue available in Blue pen only.  
**Set-Up Charge:** FREE

	<b>300</b>
Reg.	<del>\$0.62</del>
<b>Special</b>	<b>\$0.45</b>



### 310 | Javalina® Color Write

Enjoy writing in color with this fun plastic click-action pen, a nice addition to the Javalina® line. So many colors to choose from or get them all! Great item to hand out to students and professionals who take notes and jot down their ideas. Your logo highly visible with your brand on this pen. Full-color imprint available; add \$0.35 each. Imprint Area: *Standard*: 1 1/2" x 3/4"; *Full Color*: 2" x 1/4".

**Colors:** Dark Green, Lime Green, Orange, Pink, Purple, Red, Sky Blue  
**Ink Colors:** Ink matches trim color  
**Set-Up Charge:** Standard: \$15.00; Full Color: \$45.00

	<b>250</b>
Reg.	<del>\$0.68</del>
<b>Special</b>	<b>\$0.48</b>



### 313 | Javalina® Comfort Black Pen

With this pen in hand, customers will be reminded why they should choose your brand again and again. Plunge-action mechanism, solid-colored barrel with black trim. Perfect choice for business professionals in an office environment and a great gift for new hires and valued clients. Get your brand out and about on this pen. Full color imprint on barrel also available, add \$0.35 each. Imprint Areas: *Standard*: 1 1/2" x 3/4"; *Full Color*: 2" x 1/4".

**Colors:** Black, Blue, Green, Red  
**Ink Colors:** Ultra-Smooth Black, Blue  
**Set-Up Charge:** Standard: \$15.00; Full Color: \$45.00

	<b>250</b>
Reg.	<del>\$0.76</del>
<b>Special</b>	<b>\$0.57</b>





**GEM120 | Gem Pen**

Get a grip on your brand promotion by giving your clientele a gift they'll use again and again. Write off the competition with these eye-catching writing instruments. Plunger-action plastic pen with translucent colored barrels, matching rubber grip, and bright chrome trim band. This is sure to be the new favorite pen for your current and future clients with your brand on display. Imprint Area: 1 5/8" x 1/16".

**Colors:** Blue, Green, Light Blue, Light Green, Orange, Purple, Red, Yellow  
**Ink Color:** Black Medium Point  
**Set-Up Charge:** FREE

	<b>300</b>	<b>1,000</b>
Reg.	\$0.65-	\$0.57-
Special	<b>\$0.59</b>	<b>\$0.47</b>



**263 | Lemonade Pen**

Make an indelible mark on your customers and supporters with this soft-touch pen featuring a unique ombre treatment that shows off the progression of color across the barrel. Your brand will be sure to stand out. Imprint Area: 1 3/4" x 1/2".

**Colors:** Ombre Pink to Turquoise, Ombre Turquoise to Lime, Ombre Yellow to Pink  
**Ink Color:** Hybrid Black Fine Point  
**Set-Up Charge:** Silk Screen: \$15.00

	<b>250</b>	<b>1,000</b>
Reg.	\$0.82-	\$0.70-
Special	<b>\$0.75</b>	<b>\$0.64</b>



**CS | BIC® Clic Stic® Pen**

Some of the most recognizable pens around and the most popular writing pens in promotional products! Create your own color scheme by choosing the barrel and trim color with over 600 color combinations possible! Features break-resistant pocket clips and choice of cartridge colors, including Easy Glide refills. Stic® with BIC®! Imprint Area: 2 1/8" x 3/4"

**Colors:** Black, Blue, Burgundy, Clear, Cobalt, Cream, Espresso, Forest Green, Green, Metallic Dark Blue, Metallic Brown, Metallic Green, Metallic Orange, Metallic Red, Metallic Sand; Navy, Orange, Pink, Purple, Red, Silver, Slate, Teal, White, Yellow,  
**Ink Colors:** Medium Point: Black, Blue, Fashion Blue, Fashion Green, Fashion Pink, Fashion Purple, Red; Easy-Glide System®: Black; Fine Point: Blue, Black.  
**Set-Up Charge:** FREE

**FREE 2nd Color Imprint!** 

	<b>300</b>
Reg.	\$0.78-
Special	<b>\$0.50</b>

**BEST SELLER**



**ICLCEL | BIC® Intensity® Clic™ Gel Pen**

A ballpoint pen that is sure to give your campaign the winning "intensity" you're looking for! This gel pen features 0.7mm gel ink, an automatic clip-retracting mechanism, an ultra-smooth gel roller, and a 1-color barrel imprint. Your silkscreened logo will spread your message everywhere the pen goes. It's a perfect promotional fit for any business, project, or event. Imprint Area: 1 5/8" x 5/8".

**Colors:** Clear Blue, Clear Green, Clear Orange, Clear Purple, Clear Red, Solid Black, Solid White  
**Ink Colors:** Black, Blue, Green, Orange, Purple, Red, Sky Blue  
**Set-Up Charge:** FREE

**FREE 2nd Color Imprint!** 

	<b>150</b>	<b>500</b>
Reg.	\$2.41-	\$2.30-
Special	<b>\$2.32</b>	<b>\$2.16</b>

**BEST SELLER**



**Mood Pencils**

**20550 | Black Eraser**

Are you in the mood to feature something unique at your next company event? Add some color to that next promotion with this awesome pencil that change colors by the heat of your hand. Features black ferrule and either black or matching-color erasers. This bright, USA-made item is a fun way to promote your business, and you can change to meet your client's need. Great for fun favors or giveaways during company fundraising and charity events. Warning: Severe weather conditions may affect the color change. Imprint Area: 4 1/2" x 3/4".

**Colors:** Blue to Light Blue, Bright Green to Bright Yellow, Dark Teal to Green, Orange to Bright Yellow, Red to Bright Orange, Violet to Bright Pink  
**Lead:** #2 Graphite  
**Set-Up Charge:** FREE

	<b>20550</b>		<b>20551</b>	
	<b>1,000</b>	<b>2,500</b>	<b>1,000</b>	<b>2,500</b>
Reg.	\$0.416	\$0.356	\$0.438	\$0.376
Special	<b>\$0.38</b>	<b>\$0.31</b>	<b>\$0.41</b>	<b>\$0.35</b>



**55210 | Element Pen**

You'll be in your financial "element" once your campaign includes these colorful pens! Available in multiple translucent corporate colors. An appealing pen with a clip featuring a matching grip and plunger action. A great giveaway for that next promotion with your name or brand on it. Imprint Area: 1 3/4" x 1/2".

**Colors:** Blue, Green, Lime, Orange, Pink, Purple, Red, Turquoise  
**Ink Colors:** Black, Blue  
**Set-Up Charge:** FREE

**BEST SELLER**

	<b>300</b>
Reg.	\$0.60-
Special	<b>\$0.47</b>



**Moptoppers® Pens**

**P171 | Thumbs Up**  
**P172 | Miss Moptoppers®**

You'll clean up the competition with either the thumbs up or Miss Moptoppers® plastic pen and put smiles on your client's face. Plastic click-action ballpoint pen with a mop-top hairdo and smiley face. Choose from the thumbs up character or the feminine version, which features a glitter upper barrel and curvy silver clip. Long-lasting Microfiber hair functions as screen cleaner with soft silicone tips for use with touchscreen devices. Your brand will be seen by all with these fun pens. Imprint Area: 1.375" x 0.315".

**Colors:** Black, Blue, Green-Lime, Orange\*, Pink, Purple, Red, Yellow\*  
 (\* P171 only)  
**Ink Color:** Black Medium Point  
**Set-Up Charge:** \$25.00

	<b>P171</b>	<b>P172</b>
	<b>250</b>	<b>250</b>
Reg.	\$1.79-	\$2.05-
Special	<b>\$1.49</b>	<b>\$1.69</b>





### 89329 | Spring Action Divot Tool

Impress your golfing clients with this spring-action divot repair tool. Base is hard plastic with soft, satin matte finish coating and a 1" dia. removable magnetic ball marker printed in full color. Easily fits in pockets and individually bagged. Imprint Area: 1" dia.

**Colors:** Black, Red, Blue

**Set-Up Charge:** Reg: \$80.00. Special: FREE

	<b>90</b>	<b>180</b>
<b>Special</b>	<b>\$8.60</b>	<b>\$8.44</b>



### 415 | Golf Cooler Bag

Tee off your next promotion with this golf cooler bag! Made of 420D polyester with PEVA lining, holds up to nine cans. Features a detachable/adjustable padded shoulder strap, web carrying handle, side zippered main compartment for easy access, front double-zippered pocket, and a reusable ice pack. Size: 7 3/4" x 17" x 4". Imprint Area: 4" x 8".

**Color:** Black

**Set-Up Charge:** Reg: \$50.00.

Special: \$25.00

	<b>50</b>	<b>250</b>
Reg.	<del>\$18.87</del>	<del>\$14.27</del>
<b>Special</b>	<b>\$14.59</b>	<b>\$10.79</b>

### 2410A | Walksafe® Vented Auto Open & Close Compact Umbrella

Create a promotional storm for your brand by handing out this custom umbrella! Designed with a 42-inch arc, 3-section steel shaft and ribs, and an ergonomic, rubber-coated grip handle with woven wrist strap. Features reflective 3M Scotchlite™ on the canopy which in darker conditions reflects light for 360-degree enhanced visibility. It is also equipped with a vented canopy, engineered to resist windy conditions. What better way to show your customers you care than handing out these stylish umbrellas! Imprint Area: 5 1/2" bottom x 5" top x 4" high (bottom panel).

**Colors:** Black, Charcoal, Hot Pink, Mesa Orange, Navy

**Set-Up Charge:** Reg: \$96.00. Special: FREE

	<b>36</b>	<b>144</b>
Reg.	<del>\$35.09</del>	<del>\$27.09</del>
<b>Special</b>	<b>\$27.99</b>	<b>\$20.99</b>



### GP405 | Stasher Poncho

Don't let the rain stop your next marketing campaign! A perfect size to carry along for those unexpected showers. The poncho is disposable and meant for one-time use. The case may be reused after the poncho is disposed of, with your full color logo still showing. Perfect for all those outdoor events that go on rain or shine! The poncho size is 47" x 35" and includes a hood, a lightweight 30-gram PE plastic. Imprint Area: 2" dia. (domed decal).

**Color:** Frosted

**Set-Up Charge:** \$55.00

	<b>75</b>
Reg.	<del>\$2.60</del>
<b>Special</b>	<b>\$2.25</b>





**BEST SELLER**



**9300 | Retractable Banner**

Grab their attention with this sleek and stylish retractable banner display that creates an immediate visual impact. Instant set-up and take down make this a breeze to display for all your marketing needs. A carrying case is included for easy transport. Lightweight and portable, it goes where you go! Imprint Area: 31 1/2" x 78"

**Color:** White with full color imprint  
**Set-Up Charge:** With camera ready art: FREE. Factory to set up: \$45.00

	1	2	3
<b>Special</b>	<b>\$235.00</b>	<b>\$209.00</b>	<b>\$199.00</b>

**BEST SELLER**



**Table Covers**

**TFLFC3-6 | 6' 3-sided**      **TFLFC4-8 | 8' 4-sided**

Make your table will pop with these full-color, dye-sublimated table covers. Your imprint on the entire quality polyester table cover for maximum exposure will turn heads, making your brand stand out. Covers are washable, flame retardant, stain resistant, and easy to store and ship. FREE storage bag included. Imprint Area: TFLFC3-6: 130" x 66"; TFLFC4-8: 154" X 88"

**Set-Up Charge:** FREE

	<b>TFLFC3-6</b>		
	1	2	6
Reg.	<del>\$274.00</del>	<del>\$248.00</del>	<del>\$232.00</del>
<b>Special</b>	<b>\$188.00</b>	<b>\$179.00</b>	<b>\$171.00</b>
	<b>TFLFC4-8</b>		
	1	2	6
Reg.	<del>\$319.00</del>	<del>\$287.00</del>	<del>\$272.00</del>
<b>Special</b>	<b>\$222.00</b>	<b>\$213.00</b>	<b>\$205.00</b>

**Buttermints**  
**Soft Mints:**  
**BUTR | White**  
**BUTRP | Pink**  
**APAR | Pastel**  
**SOPE | Soft**  
**Peppermints**  
**Hard Mints:**  
**HPEP | Peppermint Balls**  
**HCIN | Cinnamon Balls**  
**FRBA | Assorted Fruit Balls**



Leave a favorable impression and sense of appreciation for your place of business by offering these flavorful mints. Soft and hard mints come in a variety of flavors. Fat free, gluten free, Kosher, Safe Quality Foods Certified Level II, contain no trans-fat. Soft mints have a 5-month shelf life, hard mints 12 months. Pick a stock wrapper or create your own. Great for restaurants, cash registers, hotels, hostess stands, offices, and more! Freshen up your next promotion. Must order by cases. Imprint Areas: Custom: 1 7/20" x 2 3/32" (back above seam) or 1 7/20" x 1 1/32" (back below seam, front).

**Stock Wrappers:** VISION (Vision/assorted), REALESTATE (Real Estate/assorted), SPA (Spa/assorted), FUNERAL (Funeral Home/assorted), FLAG (Flag), TYOU (Thank You), SMILE (Smiley Face), TAM (Thanks A Mint Classic), PINK (Pink Ribbon/assorted), WLOC (WE [heart] Our Customers)

**Set-Up Charge:** \$60.00

	<b>Stock</b>	<b>Custom</b>
	<b>2 Cases</b>	<b>2 Cases</b>
Reg.	<del>\$58.60</del>	<del>\$89.80</del>
<b>Special</b>	<b>\$49.00</b>	<b>\$60.60</b>



**MORE SIZES AVAILABLE!**



**Latex Balloons**  
**9STD | Standard**  
**9FAS | Fashion Opaque**

Go green while decorating for your upcoming event! The 9" latex balloons are 100% biodegradable. It features helium quality, natural latex and superior Zenith silk-screen printing. Add a little pop to your next big event. Imprint Area: 5 1/4" diameter.

**Colors:** Standard: Baby Blue, Green, Pink, Orange, Red, Royal Blue, White, Yellow (standard balloon assortment does not include white). Fashion Opaque: Brown, Lavender, Lime Green, Navy Blue, Rose, Salmon, Teal

**Set-Up Charge:** \$37.50

	<b>1,000</b>	<b>2,500</b>
Reg.	<del>\$0.162</del>	<del>\$0.153</del>
<b>Special</b>	<b>\$0.155</b>	<b>\$0.145</b>



**NEW**

**TY6028 | Unicorn**

Unicorns are perfect gifts to add a mystical touch to your brand during your next marketing campaign. An 8 1/2" plush wearing a T-shirt with your brand on it. Features thread-sewn eyes, mouth, and nose. Perfect for any field, including church organizations, law enforcement, education, financial, healthcare, non-profit, construction, government, civic clubs, real estate, automotive, and professionals. Imprint Area: 2 3/4" x 1 1/2" (shirt front).

**Colors:** White. *T-Shirts:* Black, Gray, Navy Blue, Pink, Purple, Red, Reflex Blue, White

**Set-Up Charge:** \$55.00

	<b>50</b>	<b>300</b>
Reg.	<del>\$9.99</del>	<del>\$8.69</del>
<b>Special</b>	<b>\$8.89</b>	<b>\$7.59</b>



**MopToppers® Stress Relievers**  
**PL-1358 | Regular**  
**PL-1686 | Solid Colors**

Take the stress out of your next giveaway with these patented MopToper stress relievers. A combination of a squeezable stress reliever and screen cleaner in one. Features long-lasting Microfiber hair that functions as a screen cleaner, ideal for large and small screens alike. With your brand on display, clients will know who to thank for the friendly face. Imprint Area: 1 1/4" x 3/4".

**Colors:** Blue, Lime Green, Orange\*, Red, Yellow\*\*. (\* PL-1686 only; \*\* PL-1358 only)

**Set-Up Charge:** \$55.00

	<b>100</b>
Reg.	<del>\$3.06</del>
<b>Special</b>	<b>\$2.42</b>



**62502 | Cooling Towel in Pouch**

Create a no-sweat campaign with this cooling towel in a pouch! Your clients will stay refreshed using this cooling towel. The pouch with mesh lets the towel dry faster. Features back pocket, snap closure and a 15 1/2" x 15 1/2" towel which is securely fastened to pouch with plastic release clip. Clip to a bag to keep your brand at hand. Imprint Area: 3 1/2" x 3 3/4".

**Colors:** Blue, Grey

**Set-Up Charge:** \$50.00

	<b>100</b>	<b>500</b>
Reg.	<del>\$5.74</del>	<del>\$4.54</del>
<b>Special</b>	<b>\$4.84</b>	<b>\$4.04</b>



**ComfortClay® Hot/Cold Packs**  
**WHF-CR17 | Plush Round**  
**WHF-CL17 | Plush Large**

Give customers these fantastic ground-breaking new ComfortClay® hot/cold packs to show you care about their well-being. With combination of clay, glycerin, and water, this not only provides heat to sore muscles, but can provide cold relief as well. Features plush backing to enhance your relaxation with soothing surface. Imprint Areas: *Round:* 1 1/4" diameter, *Large:* 2 3/4" x 2".

**Colors:** *Round:* Black, Green. *Large:* Black, Blue, Gray, Green

**Set-Up Charge:** \$55.00



	<b>WHF-CR17</b>
	<b>100</b>
Reg.	<del>\$2.17</del>
<b>Special</b>	<b>\$1.95</b>

	<b>WHF-CL17</b>
	<b>100</b>
Reg.	<del>\$3.20</del>
<b>Special</b>	<b>\$2.78</b>



**NEW**

**WHF-PG19 | Power Grip 3-Piece Fitness Band Set**

Hand these out during your next giveaway and your brand will travel everywhere. Safe and extremely durable for a useful way to stay fit. Latex elastic band set is portable for gym bags or suitcases. Features three tensions: easy, medium, heavy. Also assists with rehabilitative exercises, fat loss, and building muscle. Ideal for fitness in the privacy of homes. Place your message on the drawcord carrying pouch. Imprint Area: 3 1/2" x 3 3/4".

**Color:** *Pouch:* Black

**Set-Up Charge:** \$55.00

	<b>50</b>
Reg.	<del>\$5.70</del>
<b>Special</b>	<b>\$5.20</b>



**Personal Med List  
825 | English  
825S | English/Spanish**

A personal medication list so clients can keep track of medications. Available in English and English/Spanish. The folded card allows for 13 Rx and 13 OTC medications listed on each side. The customer, a family member, or a doctor or pharmacist can easily update the list. Makes keeping track of medications simple and accurate. Available with your full color digital brand on the cover. It's convenient, easy to use, and can be taken to health appointments. Fits in wallet or purse. Imprint Area: 3 1/2" x 2 3/8".

**Colors:** Clear, Blue, Green, Orange  
**Set-Up Charge:** \$40.00

Reg. ~~200~~  
~~\$1.35~~  
**Special \$1.25**



**California Proposition 65 Warning**  
**WARNING:** Cancer and Reproductive Harm  
[www.P65Warnings.ca.gov](http://www.P65Warnings.ca.gov)

**Bandage Dispensers  
3503 | Color Bandages  
3505 | Pattern Bandages**

Dispense concern and show you care by advertising on these bandage dispensers. Choice of color bandages or patterned. Convenient design is easy to refill. From the sinister office paper cuts to the treacherous jungle gym scrapes, your clients will always be prepared with these bandage dispensers with your message on display. Easily fits in pocket, purse, backpack, and more. Imprint Area: 2 3/8" x 1 1/8" (front or back).

**Colors:** *Dispensers: Solid:* Black, Blue, Dark Blue, Green, Orange, Red, White. *Translucent:* Aqua, Blue Frost, Green, Lime, Orange, Purple, Red. *Bandages: 3503:* Blue, Green, Purple, Red, Yellow, Assorted. *3505:* Blue Camo, Bugs Bunny™, Emoji, Glitter, Superman, Wonder Woman, Zebra. (Note: Specify bandage color or pattern. If not specified, assorted colors/patterns will be provided.)  
**Set-Up Charge:** \$55.00

Reg. ~~250~~  
~~\$0.91~~  
**Special \$0.77**



**40138 | SPF-30 Lip Balm**

Pucker up to this popular promo! This lip balm in plastic tube contains Aloe Vera to soothe and SPF-30 to protect lips. A very popular product, this moisturizing lip balm offers extra protection from the sun. The four-color process decoration option is sure to get your message noticed, and the product is available in six flavors to please any individual! Imprint Area: 1 3/4" x 1 1/2".

**Color:** White; Full-Color label  
**Flavors:** Cherry, Pink Lemonade, Spearmint, Tropical, Vanilla, Watermelon, Assorted  
**Set-Up Charge:** \$50.00

Reg. ~~250~~  
~~\$1.10~~  
**Special \$0.82**



**Seven Day Med-Minder  
971 | Standard  
971FC | Full-Color Digital**

Seven-day pill box, partitioned chambers to organize and dispense daily medications with the day of the week clearly marked. Compartments have large capacity. Light weight making it convenient to carry in pocket or purse. Imprint Areas: 971: 2 1/4" x 4"; 971FC: 3" dia.

**Colors:** Bases: White, Pink; Tops: Clear, White  
**Stock Designs:** 971FC: Camo, Cardinal in Spruce, Clouds, Cornfield, Dairy Cows, Eagle Flag, Grey Raindrops, Marble, Raindrops, Silo, Summer Oak, Vegetables, Watering Can  
**Set-Up Charge:** \$40.00

Reg. ~~971~~  
~~200~~  
**Special \$2.26**

Reg. ~~971FC~~  
~~100~~  
~~\$2.60~~  
**Special \$2.45**



**California Proposition 65 Warning**  
**WARNING:** Cancer and Reproductive Harm  
[www.P65Warnings.ca.gov](http://www.P65Warnings.ca.gov)

**PCLs | Scotch® Custom Printed Lint Sheets Pocket Pack**

Make sure your clients look perfect and polished for meetings and other important functions by providing this Scotch® lint sheets pocket pack! This handy tool includes 40 padded 3" x 4" disposable lint remover sheets that quickly brush away lint, pet hair, and other debris from clothing, car upholstery, and more. Specially designed cover stops lint sheets from sticking to purse or pocket contents. Customize each pack with a brand name or logo using four-color process digital printing; it will be there to stay thanks to the protective coating. No imprint on lint sheets. Imprint Area: 2 1/2" x 1 1/8".

**Color:** White; 4-color process  
**Set-Up Charge:** FREE

Reg. ~~250~~  
~~\$2.50~~  
**Special \$2.19**

Reg. ~~1,000~~  
~~\$1.89~~  
**Special \$1.69**





### FL161 | USB Rechargeable Triple Output LED

Compact in size but packs a big impression for your brand. Made from anodized aluminum this is a high-powered rechargeable flashlight. Features five modes which include three selectable light levels, strobe and S.O.S mode. Adjust the beam using the push/pull head. Comes with USB charger cable and a pocket/belt clip. Includes one rechargeable battery. Imprint Area: 1" x 1/4".

**California Proposition 65 Warning**  
**WARNING:** Cancer and Reproductive Harm.  
[www.P65Warnings.ca.gov](http://www.P65Warnings.ca.gov)

**Color:** Black  
**Set-Up Charge:** \$55.00

Reg. **12** \$31.79  
**Special \$27.69**



### 21272 | Converter Light

Light up your next marketing promotion with this converter light. Powered by 1800 mAh lithium battery, there is no need to worry about replacing batteries. Compact and foldable, this light has a 360° head swivel and a 180° handle swivel. Convert this light source into a desk lamp, flashlight, spotlight, or lantern. Your customers will keep it handy for emergencies, outdoor adventures, the home, or office. Imprint Area: 1" x 1".

**Color:** Black  
**Set-Up Charge:** \$50.00

Reg. **25** \$22.89  
**Special \$17.85**



### Dip Trip™ Vehicle Sauce Holder 16101 | Standard Packaging 16201 | Bulk Packaging

Keep your brand in front of customers when they are traveling—and snacking. This on-the-go sauce holder attaches to the vent of a vehicle. Simply insert the vent clip into the car vent and place your favorite sauce in the holder (fits most standard-size sauce cups). Includes ramekin for packet sauces. Your clients will have a handy holder so there will never be a dry fry or sauceless nugget. Dipping at every red light! The Dip Trip is the on-the-go sauce solution with your name on it with a full color epoxy label. Standard packaging includes backer card. Imprint Area: 1 1/64" x 1/32".

**Colors:** Black, Grey, White  
**Set-Up Charge:** \$50.00

Reg. **16101** 100 \$2.99-  
**Special \$2.79** **16201** 100 \$1.98-  
**\$1.65**



### TK-150 | Trifold Travel Kit

Free your customers of clutter and say hello to their new travel companion with your brand on it. This trifold travel kit keeps all belongings in place and includes a hanging hook to conveniently hang it anywhere. Features three zippered compartments to store all travel necessities, two easy access elastic holders, and snap closure. Imprint Area: 4" x 4".

**Colors:** Black, Navy Blue  
**Set-Up Charge:** \$62.50

Reg. **25** \$13.17  
**Special \$9.65**



### LG308 | Leeman™ Nuba ID Wallet

Put your brand in your customer's hand. Most people don't leave their homes without keys and wallet. Now this three-in-one item will have your brand going places. Imprinted with your debossed logo, this faux suede, thermo PU ID holder, wallet, and key ring features a clear PVC ID display window, snap closure, and five interior pockets for cards. Imprint Area: 1 1/2" x 2".

**Colors:** Black, Brown, Gray, Red, Reflex Blue, Teal  
**Set-Up Charge:** \$80.00

Reg. **75** \$5.29-  
**Special \$3.99**





### SS | Custom Sticker Sheets

Your brand will assuredly stick around when placed on this vinyl decal with removable adhesive. Stickers are trending and will stick on everything. People want to express themselves on their favorite items and stickers are an easy, inexpensive, and quick way to decorate their stuff with your 4-color process brand. Stand out on their

books, water bottles, cars, cycles, sports gear, school spirit, laptops, and favorite tech accessories. Customize with shapes that fit your campaign. The possibilities are endless! Size: 9" x 3 3/4". Imprint Area: call for options.

**Color:** White

**Set-Up Charge:** FREE

	125	250	400	500	1,000
<b>Special</b>	<b>\$2.40</b>	<b>\$1.70</b>	<b>\$1.43</b>	<b>\$1.33</b>	<b>\$1.15</b>

### BEST SELLER



### VSCAL | Value Stick™ Calendars

Make sure your name sticks around with these popular calendars. They can go anywhere and will keep your name in front of customers all year long. Packed in a counter display for distribution; light enough to mail with no additional postage charges. Standard 13-month pad. Add second and third imprint colors for an additional charge: 2-color add \$0.14 each, 3-color add \$0.28 each. Imprint area: varies by style selected. Please check with your Bankers Promotional Consultant for imprint area, colors, and shapes.

**Set-Up Charge:** FREE

	150	250	500	1,000
<b>Special</b>	<b>\$0.72</b>	<b>\$0.70</b>	<b>\$0.64</b>	<b>\$0.57</b>

### 9715 | Booklet Style Memo Book

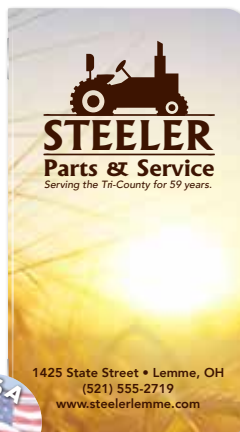
A long-time top seller with a new look, saddle stitched on the side! Generous ad copy space on white cover stock.

Features 64 pages with ruled lines, rounded corners, and full-color imprint to make your name pop. Coated outside cover. Fits easily in pocket, purse, briefcase, or vehicle for keeping important notes and information handy. Create a custom look or use a stock design. Please check with your Bankers Promotional Consultant for stock designs for front and back covers. Imprint Area: 2 5/16" x 4 1/4".

**Color:** White

**Set-Up Charge:** FREE

	250	500	1,000	1,500
<b>Special</b>	<b>\$1.57</b>	<b>\$1.21</b>	<b>\$1.03</b>	<b>\$0.97</b>



### BEST SELLER



	100	250	500	750	1,000
<b>Special</b>	<b>\$4.95</b>	<b>\$4.80</b>	<b>\$4.39</b>	<b>\$4.25</b>	<b>\$4.19</b>

### 1735 | Mini 3-Month In-View Calendars

One...Two...THREE months in view, sized for smaller areas! Offer long-term planning with these calendars.

Features 1- to 4-color process, black and red pad design of 12-months/12 sheets, tinned at the top. The ad copy size offers generous space for both imagery and information. Your brand and message will be featured on every sheet and will never be out of sight. Size: 10 7/8" x 18". Imprint Area: 10" x 2 1/2".

**Set-Up Charge:** FREE

**MINI SIZE!**

	100	200	300	500	750
<b>Special</b>	<b>\$8.75</b>	<b>\$6.60</b>	<b>\$5.87</b>	<b>\$4.79</b>	<b>\$4.51</b>



### Good Value Calendars

<b>Stapled</b>	<b>7228</b>	<b>Spiral</b>	<b>7028</b>	<b>Picture</b>	<b>7066</b>
	<b>7266</b>		<b>Motivations</b>		<b>7069</b>
	<b>7269</b>		<b>Country Days</b>		<b>Celebrate America</b>
	<b>7242</b>		<b>7042</b>		<b>Classic Autos</b>

Impress and inspire with dynamic images and motivational quotes on spiral and stapled 13-month, appointment-style calendars. All Good Value spiral and staple styles are available. Contact your Bankers Promotional Consultant for information on additional picture subjects available. Size: *Open:* 11" x 19"; *Closed:* 11" x 10". Imprint area: 10 3/16" x 1 3/8" on drop ad space.

**Set-Up Charge:** FREE

	150	300	500	1,000
<b>Stapled</b>	<b>\$1.39</b>	<b>\$1.33</b>	<b>\$1.29</b>	<b>\$1.27</b>
<b>Spiral</b>	<b>\$1.48</b>	<b>\$1.42</b>	<b>\$1.39</b>	<b>\$1.35</b>

### BEST SELLER

### 4400 | Full-Color Weekly Memo Calendar

Get the eye-catching beauty of full color with this memo calendar. It has a sturdy wall-mount board and spiral-bound pages on a hanging bar. View a full week plus insets of before, current, and after months on each page; includes Julian dates. Back pages contain recipes, a listing of holidays/anniversaries, and farm and home reference pages. Optional easel back; add \$0.13 each. Size: 7" x 13". Imprint Area: 6 1/4" x 2" (on mount).

**Mount Selections:** Autumn, Gardening, Mountain, Patriotic, Rural. 100 minimum per selection.

**Set-Up Charge:** FREE



# BEST SELLER



**Budget Mug**  
**45140 | White 45140C | Colors**  
 May your client roster be overflowing when you give out these 11 oz. ceramic mugs during your next marketing or advertising campaign! Great to promote your business. These mugs feature a glossy exterior and interior, large C-handle, and color choices to fit most branded logos. Add a bit of relaxation to the meeting or day with these mugs. Imprint Areas: 2 5/8" x 2 3/4" (side), 7 1/4" x 2 3/4" (wrap).

**Colors:** 45140C: Black, Cobalt, Cream, Dark Green, Lime, Maroon, Purple, Royal, Yellow  
**Set-Up Charge:** \$50.00

	45140	45140C
	72	72
Reg.	\$1.84	\$2.97
Special	\$1.21	\$1.80



**CC-16 | Coliseum Cup**  
 Your brand will be the toast of the town when you hand out these 16 oz. cups with your logo, a classy alternative to the stadium cup. Appealing to all ages. The dense polypropylene material ensures these cups are built to last. BPA free. Imprint Area: 2 1/2" x 3".

**Colors:** Black, Blue, Clear, Dark Green, Gray, Navy, Neon Green, Neon Orange, Neon Pink, Orange, Purple, Red, White, Yellow, Assorted  
**Set-Up Charge:** \$50.00

	100	500
Reg.	\$1.02	\$0.82
Special	\$0.85	\$0.72



**12 oz. Slim Fit Scuba Coolie**  
**100012S | 1-Color, 3 locations**  
**100012S4CP | Full Color**

Make a marketing splash with these trendy, slim fit beverage holders! Perfect for fitting bottles and narrow cans. Made of 1/8" thick, high-density scuba foam. Features great insulation and absorbs condensation. Imprint Areas: 3" x 4" (side); 1 1/2" dia. (bottom).

**Colors:** Black, Burgundy, Carolina Blue, Chocolate, Crimson, Forest, Green Camo, Gray, Kelly Green, Khaki Beige, Lime, Magenta, Navy, Neon Blue, Neon Pink, Orange, Pastel Pink, Purple, Red, Royal, Tan Camo, Turquoise, TX Orange, White, Yellow  
**Set-Up Charge:** \$40.00

	100012S	100012S4CP
	250	250
Reg.	\$1.14	\$1.64
Special	\$0.92	\$1.52

## POPSOCKETS



**PopThirst Holders**  
**POPTHIRSTCUP |**  
**Cup Sleeve**  
**POPTHIRSTCAN |**  
**Can Holder**

Your favorite drink's new best friend! Provide either of these items with your brand on these trendy drink holders. Keep hot beverages hot and in their hand or wrap their canned beverage with your logo so they know how "cool" you are. Includes an integrated (and swappable) imprinted PopGrip for the ultimate grasp. Designed with a non-slip foam material to prevent hand slippage. Compact design collapses flat for no-fuss pocketability and storage. Get your name into your customers' hands. Polybagged with instructions. Imprint Area: 1.3" dia.

**Colors:** Black-Black, White-Black  
**Set-Up Charge:** \$41.67

	100
Reg.	\$10.32
Special	\$9.73



**51033 | Telescoping Straw with Bottle Opener**

Clients will take this straw with them everywhere with your brand on the case. The telescoping straw fits nicely into a carrying case which also includes a 3 3/4" brush set to clean the straw and a bottle opener for on-the-go. Toss in a bag or use the carabiner to clip it on. Enjoy this 9" straw with silicone tip and brush cleaner which fits inside straw for easy storage. Bottle opener at the top of the travel case with a keyring attachment. Handwashing recommended. Perfect for on-the-go drinking. Imprint Area: 2" x 1/2".

**Colors:** Black, Blue, Red  
**Set-Up Charge:** \$50.00

	100	500
Reg.	\$3.65	\$3.25
Special	\$3.39	\$2.89





### 4710 | 24 oz. Mood Stainless Steel Bottle

In the mood for a change in your marketing promotion? Look to this color-changing bottle featuring single-wall stainless steel construction with your brand on display. Fill with cold water and watch it transform from white to a playful color to match the silicone carry strap. Includes stainless steel twist cap over a wide mouth opening. BPA free; hand wash only. Imprint Areas: 2 1/2" x 5" (one side); 8 1/4" x 5" (wrap).

**Colors:** White-Black, White-Blue, White-Green, White-Purple, Assorted.  
**Set-Up Charge:** \$55.00

50  
 Reg. \$10.49  
 Special \$9.49



### DBT-KN20 | Kona 17 oz. Stainless Steel Vacuum Bottle

Surfs up on your next promotional campaign with this Kona bottle! A 17 oz. stainless steel, double-wall insulated bottle with dual openings: one to add ice and one for drinking. Features a wide-mouth screw-on cap with strainer for infusing water and a removeable loop carrying handle. FDA-certified; hand wash only. Imprint Area: 3 1/2" x 3 1/2" (one side). Additional imprint options available; call for details.

**Colors:** Black, Navy, White  
**Set-Up Charge:** \$55.00

25  
 Reg. \$11.32  
 Special \$9.82



### B819 | Impulse Series Tumbler

A sophisticated take on popular travel cups. This powder-coated finish, 27 oz. tumbler is copper vacuum insulated, double-walled, and made of stainless steel. Closing the twist-on, slide open/close lid lets recipients take their drinks with them wherever they go. Includes straw for use with cold beverages. Individual retail box included. Imprint Areas: 3 1/2" x 1 3/4" (one side); 11 1/8" x 1 3/4" (wrap).

**Colors:** Gray, Matte Black, Pink, Seafoam, Silver  
**Set-Up Charge:** \$60.00

48 144  
 Reg. N/A \$14.15  
 Special \$14.95 \$12.95

### SL234PR | 20 oz. Urban Peak® Trail Tumbler

Get on board with branding your business with this copper-lined, vacuum-insulated deep draw liner that maintains optimal drinking temperatures and provides 8X heat retention. Made of stainless steel, dual-walled construction with lead-free vacuum seal. Features unique, spill-proof AS plastic flip top design with Tritan snap locking closure lid. Keeps ice solid for over 24 hours. Sweat-free design with powder-coated finish. Imprint Areas: 2" x 1 3/4" (one side); 9 1/2" x 2 1/4" (wrap).

**Colors:** Black, Blue, Gray, White  
**Set-Up Charge:** \$55.00

24 96  
 Reg. \$17.19 \$16.09  
 Special \$16.49 \$14.99

**OTHER SIZES AVAILABLE!**



### 100485 | 12 oz. Corkcicle® Stemless Wine Cup

Cheers to elevating every elegant sip during your promotional giveaway! With the included lid, this stemless wine cup keeps any cold beverage ice cold for 9+ hours, even in the sun! It will even maintain the temperature of hot beverages for 3 hours. Made of stainless steel; features a 12-ounce capacity and is perfect for celebrating anytime, anywhere. Each cup is triple insulated, vacuum sealed, cools 2x longer than plastic, and includes easy-grip flat sides, a non-slip bottom and a one-piece retail gift box. BPA-free item with your brand name or logo printed or lasered for maximum exposure. Hand wash with a mild dish soap. Imprint Areas: 1 3/4" x 1 1/4" (upper center); 1 3/4" x 1 1/2" (center).

**Colors:** Brushed Steel, Gloss White, Matte Black, Walnut  
**Set-Up Charge:** \$65.00

	<b>Brushed/White/Black</b>	<b>Walnut</b>
	25	25
Reg.	\$39.10	\$43.62
Special	\$25.99	\$28.99

THE



since 1896

**BankersADVERTISING**

COMPANY

# GUIDE

POINTING YOU IN THE RIGHT DIRECTION



**BankersADVERTISING**

since 1896

COMPANY

Your one source for all things branded.

PROMOTIONAL ADVERTISING  
ADVERTISING CALENDARS | BRANDED APPAREL  
SIGNAGE & DISPLAYS | AWARDS & RECOGNITION

Watch your sales soar with the perfect promo  
to heat up your brand.

### Bags



### Health + Wellness



### Pens



### Calendars



#### General Information

**Prices:** All pricing includes a one color/one location imprint, unless otherwise noted. Free or reduced set-up charges apply to first color only. Prices are subject to change.

**Dimensions:** Listed width x height (x depth), unless otherwise noted.

**Production Time:** Begins once complete order information and artwork are received. Production times vary by product; contact us for times. Time does not include any proofs or shipping transit time.

**California Proposition 65 Warning:** The California Safe Drinking Water and Toxic Enforcement Act of 1986 impacts products shipped into the state of California or which are ultimately distributed in that state. There are over 1,000 chemicals listed as harmful by the state of California. Items noted with this warning have been identified by our respective suppliers as products that may contain a significant amount of chemicals known to the state of California to cause cancer, birth defects, or reproductive harm.

**Effective Dates:** May 1 – August 31, 2020.

